

 2 Bedrooms

 2 Bathrooms

 1 Reception

 EPC Band C

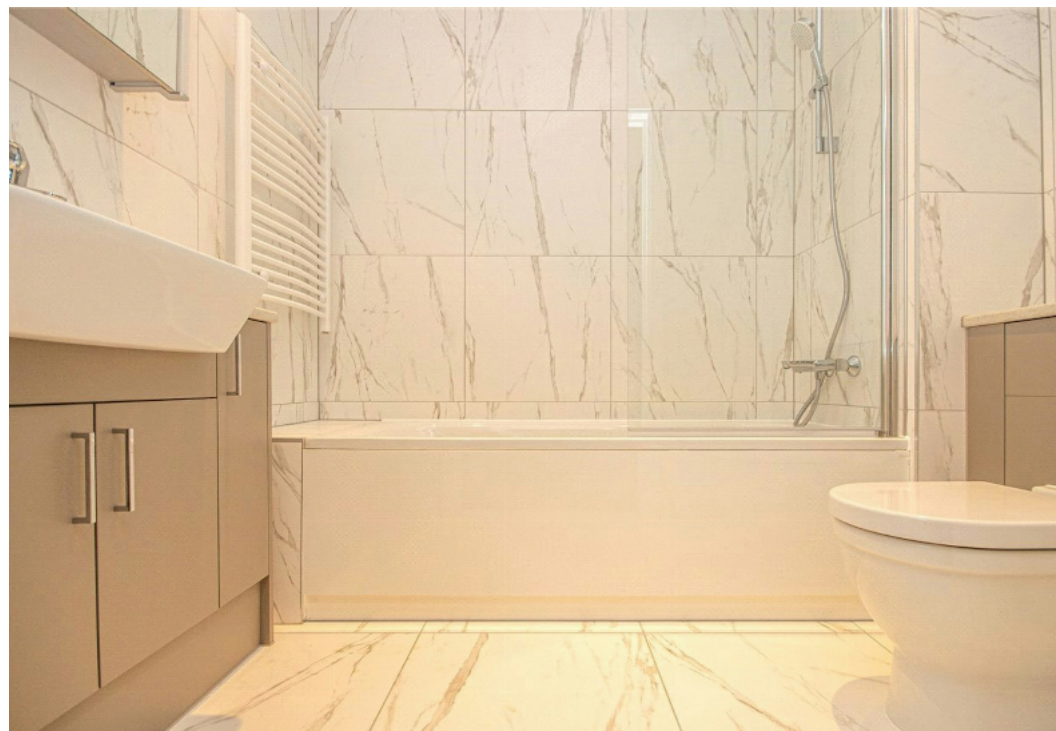
Council Tax Band:
C £0.00 ()

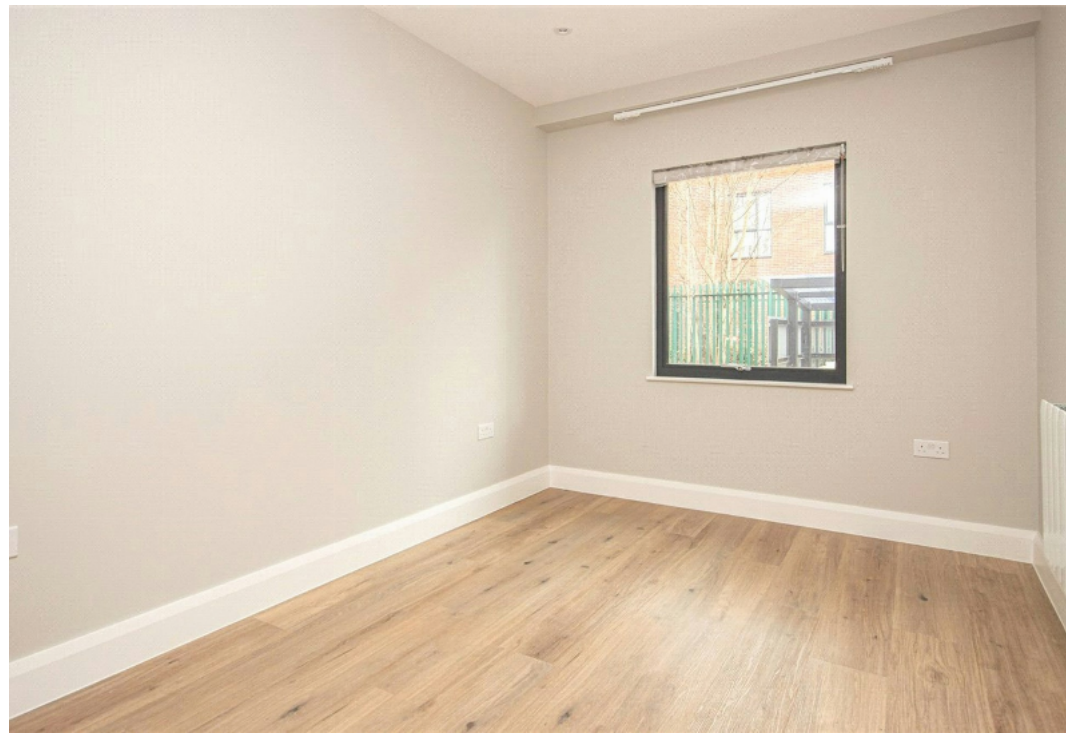


A spacious two double bedroom second floor apartment finished to a high standard throughout with easy access to the town centre and mainline station.

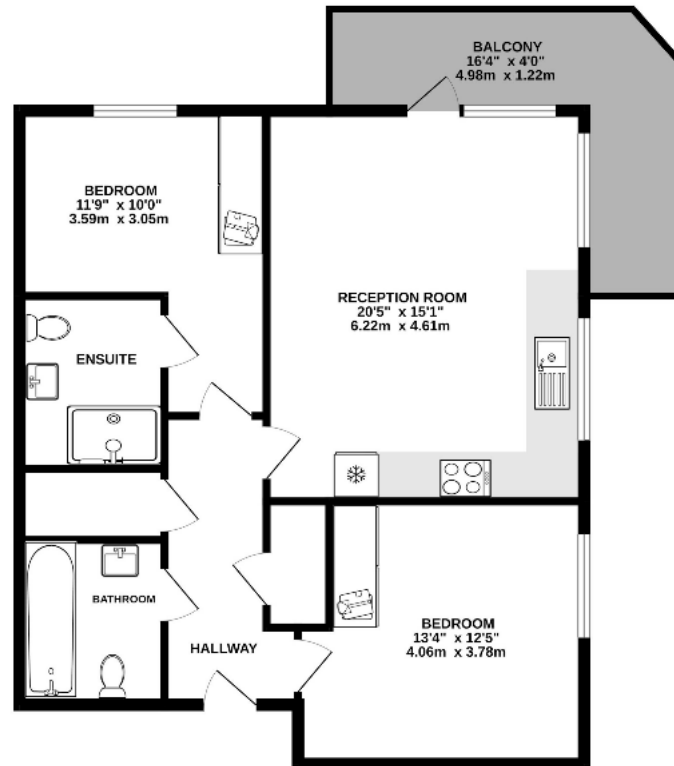
Description

Oakfield Court offers a chance to rent a unique apartment in a vibrant development centrally located near the town centre, boasting excellent road and rail links to central London. This two-bedroom apartment features an impressive specification, including bedrooms with built-in wardrobes, a luxury bathroom, and an en-suite shower room for the main bedroom. With high insulation levels, the apartment includes an energy-saving mechanical ventilation heat recovery system, double glazing, and Karndean flooring. The open-plan living/kitchen area showcases grey granite worktops and splashbacks, Hansgrohe sink mixers, and Bosch appliances like an oven, solo microwave, dishwasher, and induction hob. A high-capacity LG washer/drier is included. Full Fibre Internet from BT/Openreach is available, alongside Freeview and Sky Q compatibility. An allocated parking space and EV car charging points are provided on site.





FLAT 16
801 sq.ft. (74.4 sq.m.) approx.



TOTAL FLOOR AREA: 801 sq.ft. (74.4 sq.m.) approx.
Nash 081-0800000-000000

Important Information These particulars do not constitute an offer or contract in whole or part. The statements contained herein are made without responsibility on the part of Ashtons or the vendors and they cannot be relied upon as representatives of fact. In respect of floor plans, these are for illustrative purposes only. The measurement and position of each element is approximate and must be viewed as such. Intending purchasers should therefore satisfy themselves by inspection or otherwise as to their correctness. The vendors do not make or give, and neither Ashtons nor any person in their employment has any authority to make or give, any representation or warranty whatsoever in relation to this property. We offer a wide range of services through third party providers including solicitors, surveyors, removal firms, mortgage providers and EPC suppliers. We receive additional payments for administering suppliers quoting software and making referrals. You are not under any obligations to use these services and it is your discretion whether you choose to deal with these parties or your own preferred supplier. You should be aware the average payment we received in 2024 equated to £29.76 per referral.