



2 bedrooms



1 bathroom



1 reception



EPC Band B

Council Tax Band:
C £2,111.65 (25/26)



Fabulous, spacious and exceptionally bright executive apartment with open plan living, two double bedrooms, secure underground parking space, available immediately.

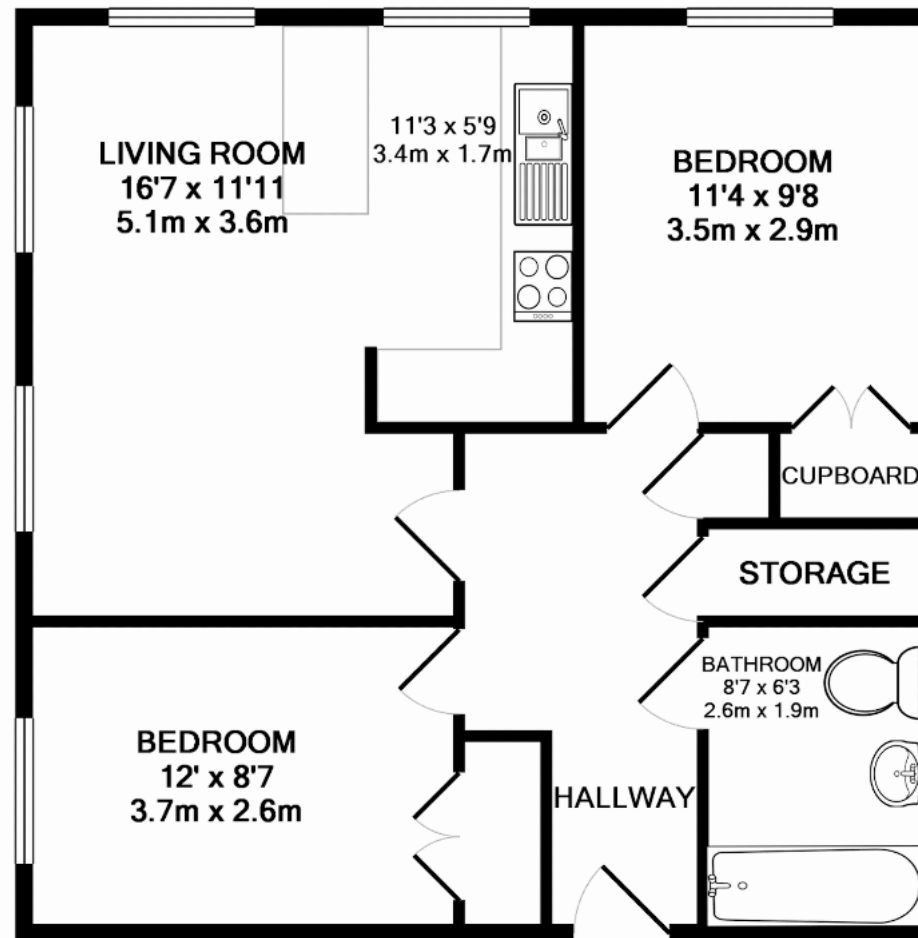
Description

This top floor apartment offers generous room sizes with good quality fittings, appliances in the kitchen, a modern bathroom suite, and dual aspect views flooding the property with light. The property has front facing views over well-maintained gardens and benefits from gas radiator heating and double glazing, together with secure entry phone access. Externally, there is one underground parking bay with remote controlled gated access, along with communal gardens. Council Tax: Band C (£2,111.65 Apr 25/Mar 26).









TOTAL APPROX. FLOOR AREA 626 SQ.FT. (58.1 SQ.M.)

This floor plan is for illustrative purposes only.
The measurement and position of each element is approximate and must be viewed as such.

Important Information These particulars do not constitute an offer or contract in whole or part. The statements contained herein are made without responsibility on the part of Ashtons or the vendors and they cannot be relied upon as representatives of fact. In respect of floor plans, these are for illustrative purposes only. The measurement and position of each element is approximate and must be viewed as such. Intending purchasers should therefore satisfy themselves by inspection or otherwise as to their correctness. The vendors do not make or give, and neither Ashtons nor any person in their employment has any authority to make or give, any representation or warranty whatsoever in relation to this property. We offer a wide range of services through third party providers including solicitors, surveyors, removal firms, mortgage providers and EPC suppliers. We receive additional payments for administering suppliers quoting software and making referrals. You are not under any obligations to use these services and it is your discretion whether you choose to deal with these parties or your own preferred supplier. You should be aware the average payment we received in 2024 equated to £29.76 per referral.