 4 Bedrooms

 2 Bathrooms

 1 Reception

Council Tax Band:
E £3,037.87 (2026/ 2027)

 **ashtons**
for life's great moves

Glebe Road, Welwyn, Hertfordshire, AL6 9PB
£2,750 PCM

Beautifully presented 4-bedroom extended semi-detached family home with lovely front and rear gardens and stunning views.

Description

Situated a short walk from the village centre is this beautifully presented family home. The welcoming entrance hall leads to a spacious living room with a limestone fireplace, oak flooring, and French doors to the garden. The bespoke luxury kitchen boasts top-of-the-range built-in appliances, granite worktops, ambient lighting, and a central island with a hob, leading to the dining area, both featuring Karndean flooring and underfloor heating. The ground floor also includes a sizeable bedroom and a modern, fully tiled shower room with underfloor heating. Upstairs, there are three double bedrooms, with the master offering bespoke wardrobes, all served by a fully tiled contemporary family bathroom. The property features a sweeping block-paved driveway with ample parking and a side gate to the rear garden. The garden boasts wonderful village and valley views, a raised patio, well-kept lawns with rockery borders, an ornate fishpond, apple tree, and additional patio/BBQ area with a timber shed. Council Tax: Band E.

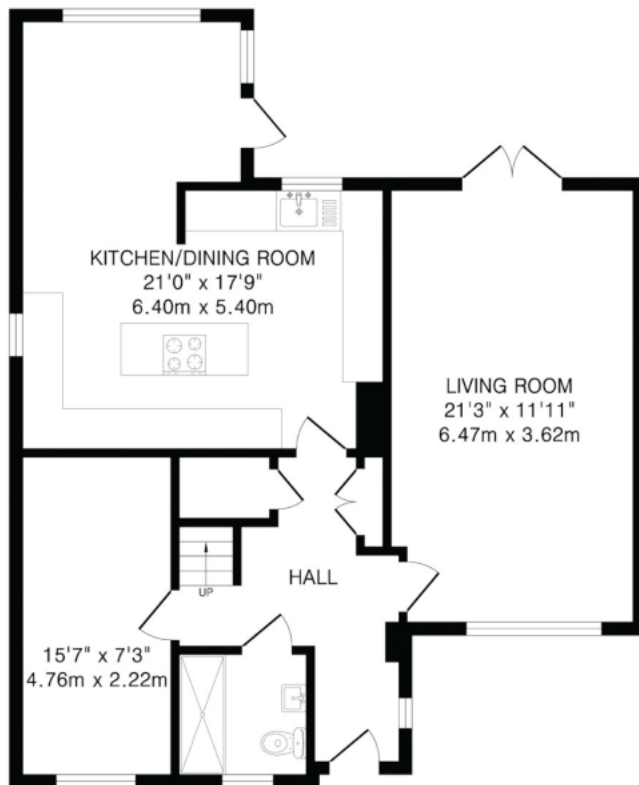
Location

Occupying a sought-after position in a quiet cul-de-sac of similar homes, this property enjoys the best of village and countryside living. It lies within the catchment area for the highly regarded Outstanding-rated St Mary's Church of England Primary

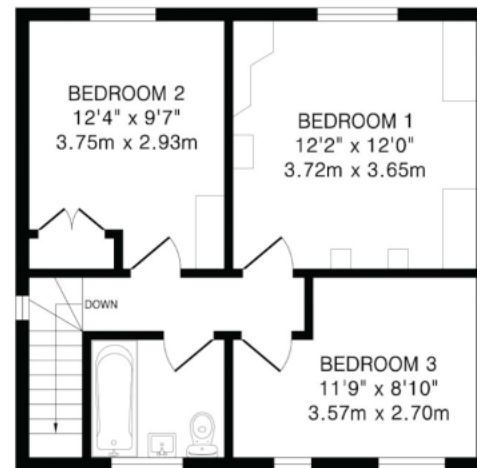








Ground Floor
862 sq.ft.(80.1 sq.m)approx.



First Floor
473 sq.ft.(43.9 sq.m)approx.

TOTAL FLOOR AREA: 1335 sq.ft.(124.0 sq.m)approx.
This floorplan is for illustration purposes only. The measurements and position of each element are approximate and must be viewed as such.

Important Information These particulars do not constitute an offer or contract in whole or part. The statements contained herein are made without responsibility on the part of Ashtons or the vendors and they cannot be relied upon as representatives of fact. In respect of floor plans, these are for illustrative purposes only. The measurement and position of each element is approximate and must be viewed as such. Intending purchasers should therefore satisfy themselves by inspection or otherwise as to their correctness. The vendors do not make or give, and neither Ashtons nor any person in their employment has any authority to make or give, any representation or warranty whatsoever in relation to this property. We offer a wide range of services through third party providers including solicitors, surveyors, removal firms, mortgage providers and EPC suppliers. We receive additional payments for administering suppliers quoting software and making referrals. You are not under any obligations to use these services and it is your discretion whether you choose to deal with these parties or your own preferred supplier. You should be aware the average payment we received in 2024 equated to £29.76 per referral.