

-  1 Bedroom
-  1 Bathroom
-  1 Reception
-  EPC Band D

Council Tax Band:
B £1,870.78 (2026-2027)



A furnished one bedroom apartment situated on the ground floor, with video entry system and an allocated parking space.

Description

This part furnished modern ground floor apartment features an entrance hall leading to an open plan kitchen and living/dining area with a spacious balcony. The kitchen boasts integrated appliances and a contemporary design. Completing the living space is a bright double bedroom. Access to the development includes a video entry system. Externally, the property offers a communal rooftop terrace and an allocated parking space.

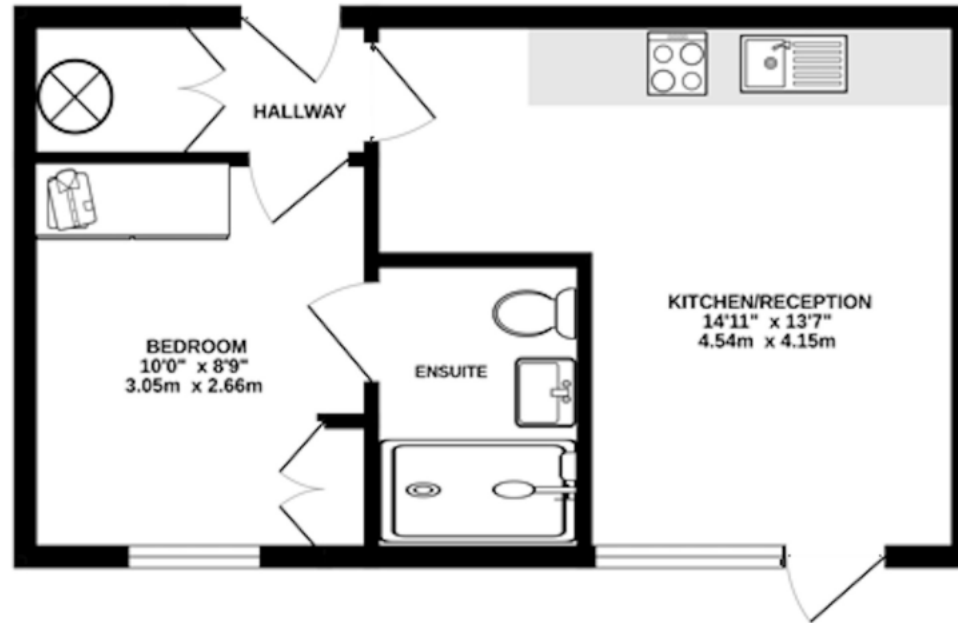
Location

The Mercury House development is conveniently located within 5 minute walking distance to the mainline station (London Kings Cross 28 minutes). Shire Park Business Park and the town centre with its extensive amenities including John Lewis, Waitrose a





GROUND FLOOR
322 sq.ft. (29.9 sq.m.) approx.



TOTAL FLOOR AREA: 322 sq.ft. (29.9 sq.m.) approx.
Made with Metropix 02025

Important Information These particulars do not constitute an offer or contract in whole or part. The statements contained herein are made without responsibility on the part of Ashtons or the vendors and they cannot be relied upon as representatives of fact. In respect of floor plans, these are for illustrative purposes only. The measurement and position of each element is approximate and must be viewed as such. Intending purchasers should therefore satisfy themselves by inspection or otherwise as to their correctness. The vendors do not make or give, and neither Ashtons nor any person in their employment has any authority to make or give, any representation or warranty whatsoever in relation to this property. We offer a wide range of services through third party providers including solicitors, surveyors, removal firms, mortgage providers and EPC suppliers. We receive additional payments for administering suppliers quoting software and making referrals. You are not under any obligations to use these services and it is your discretion whether you choose to deal with these parties or your own preferred supplier. You should be aware the average payment we received in 2024 equated to £29.76 per referral.