



2 Bedrooms



1 Bathroom



1 Reception

This terraced house has 2 spacious bedrooms, a modern kitchen & bathroom, cosy lounge, plus a large patio garden with a wooden outbuilding.

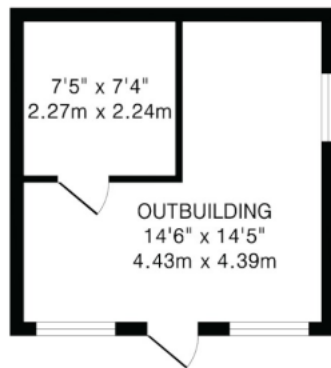
Description

Nestled in a charming neighbourhood, this delightful two-bedroom terraced house offers an inviting and cosy atmosphere. The property boasts a bright and comfortable lounge area designed for relaxation and leisure. The modern kitchen is fitted with contemporary units, providing ample storage and a practical layout for culinary enthusiasts. The modern bathroom, complete with quality fittings, exudes a sleek and stylish aesthetic, enhancing the overall appeal of the home. Complementing the well-designed interior, the property features a private, expansive patio garden, offering a serene outdoor space ideal for entertaining guests or enjoying a quiet afternoon. The garden also includes a large wooden outbuilding, providing versatile options for additional storage or a creative workspace. Situated in a location brimming with amenities, this home ensures convenience is at your doorstep. It is in close proximity to reputable schools, making it an excellent choice for growing families. With local shops and dining options just a stone's throw away, you'll find everything you need within easy reach. Enjoy the perfect blend of community feel and accessibility, with major transport links nearby.

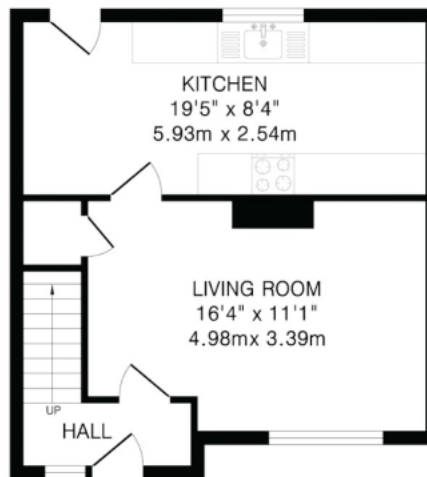




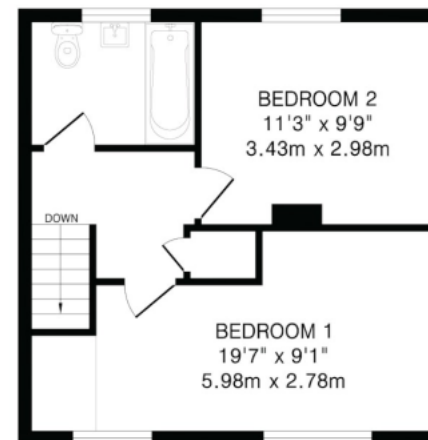




Outbuilding
209 sq.ft.(19.4 sq.m)approx.



Ground Floor
398 sq.ft.(37.0 sq.m)approx.



First Floor
385 sq.ft.(35.7 sq.m)approx.

TOTAL FLOOR AREA: 992 sq.ft.(92.1 sq.m)approx.

This floorplan is for illustration purposes only. The measurements and position of each element are approximate and must be viewed as such.

Important Information These particulars do not constitute an offer or contract in whole or part. The statements contained herein are made without responsibility on the part of Ashtons or the vendors and they cannot be relied upon as representatives of fact. In respect of floor plans, these are for illustrative purposes only. The measurement and position of each element is approximate and must be viewed as such. Intending purchasers should therefore satisfy themselves by inspection or otherwise as to their correctness. The vendors do not make or give, and neither Ashtons nor any person in their employment has any authority to make or give, any representation or warranty whatsoever in relation to this property. We offer a wide range of services through third party providers including solicitors, surveyors, removal firms, mortgage providers and EPC suppliers. We receive additional payments for administering suppliers quoting software and making referrals. You are not under any obligations to use these services and it is your discretion whether you choose to deal with these parties or your own preferred supplier. You should be aware the average payment we received in 2024 equated to £29.76 per referral.