

 5 Bedrooms

 3 Bathrooms

 3 Receptions

 3

Council Tax Band:  
F £3,463.69 (2025-2026)

Local Authority:  
North Herts District Council





Exceptional five-bedroom detached home over three floors with high-spec interiors, cinema room, dressing room, and landscaped garden.

### Description

Arranged over three beautifully designed floors, this unique five-bedroom detached property combines high-end finishes with modern living. The ground floor boasts an open-plan layout with a spacious entrance hall featuring ceramic tiled flooring and a striking wooden staircase with glass balustrades. The contemporary kitchen/dining area includes a Quooker tap, integrated NEFF appliances, wine cooler, and smart fridge-freezer with Wi-Fi. A cosy lounge with surround sound and a home office open onto a south-facing garden with a lawn, outdoor dining, fire pit, and pizza oven. Additional ground floor rooms include a lounge, stylish cloakroom, and utility room. The first floor hosts the principal bedroom suite with a Juliette balcony, feature oil fire, walk-in wardrobe, and luxury en-suite, plus two additional bedrooms, one with an en-suite. A dressing room with mirrored wardrobes is also present. The top floor includes a cinema room and a spacious bedroom/games room. Features include electric blinds and high-end finishes, with the option of furnished or unfurnished. The front features a garage and driveway for three vehicles.

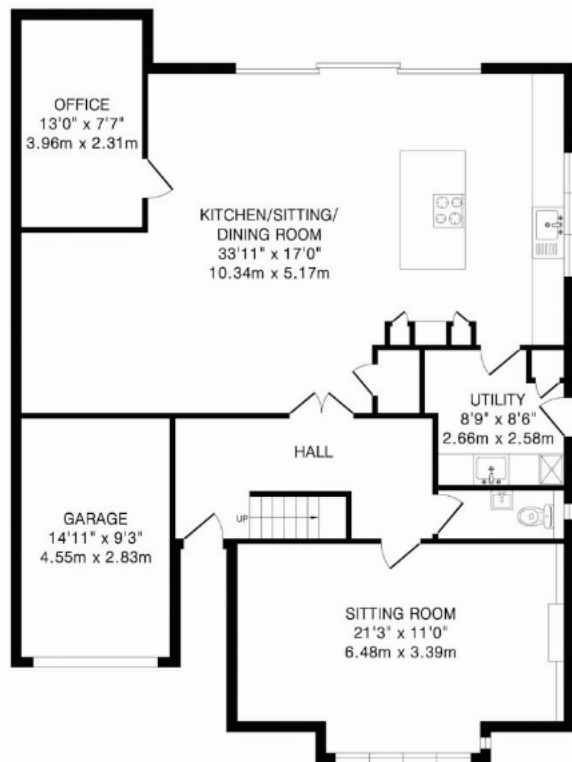




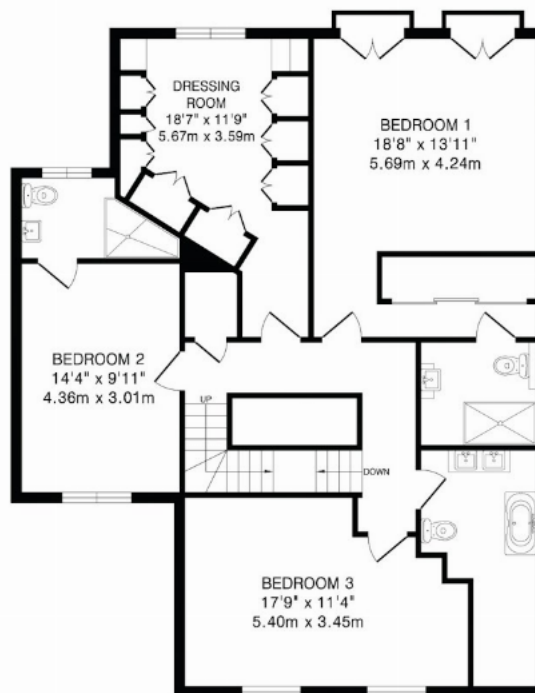








Ground Floor  
1334 sq.ft.(123.8 sq.m)approx.



First Floor  
1126 sq.ft.(104.6 sq.m)approx.



Second Floor  
791 sq.ft.(73.4 sq.m)approx.

TOTAL FLOOR AREA: 3251 sq.ft.(301.8 sq.m)approx.  
This floorplan is for illustration purposes only. The measurements and position of each element are approximate and must be viewed as such.

**Important Information** These particulars do not constitute an offer or contract in whole or part. The statements contained herein are made without responsibility on the part of Ashtons or the vendors and they cannot be relied upon as representatives of fact. In respect of floor plans, these are for illustrative purposes only. The measurement and position of each element is approximate and must be viewed as such. Intending purchasers should therefore satisfy themselves by inspection or otherwise as to their correctness. The vendors do not make or give, and neither Ashtons nor any person in their employment has any authority to make or give, any representation or warranty whatsoever in relation to this property. We offer a wide range of services through third party providers including solicitors, surveyors, removal firms, mortgage providers and EPC suppliers. We receive additional payments for administering suppliers quoting software and making referrals. You are not under any obligations to use these services and it is your discretion whether you choose to deal with these parties or your own preferred supplier. You should be aware the average payment we received in 2024 equated to £29.76 per referral.