


 3 Bedrooms

 2 Bathrooms

 4 Receptions

 EPC Band E

Council Tax Band:
F £3,590.20 (2026-2027)



A beautifully presented three double bedroom home offering a fantastic blend of outstanding character features combined with modern fixtures and fittings. This stunning house is offered unfurnished and is available now. Rental includes a gardener.

Description

Linces Farm Cottages blends character and contemporary features with picturesque countryside views. The deceptively spacious cottage boasts four reception rooms (one can serve as a fourth bedroom), featuring a beautiful kitchen/breakfast room with granite worktops and an aga, leading to an open-plan family room, dining room, and lounge with open fireplace. Upstairs, find three double bedrooms and a luxury bathroom. The rear offers a well-maintained, secluded garden, and the front provides off-road parking for several cars. Postcode: AL6 9NL Council Tax: Band F - £3,590.20 (April 2026 - March 2027)

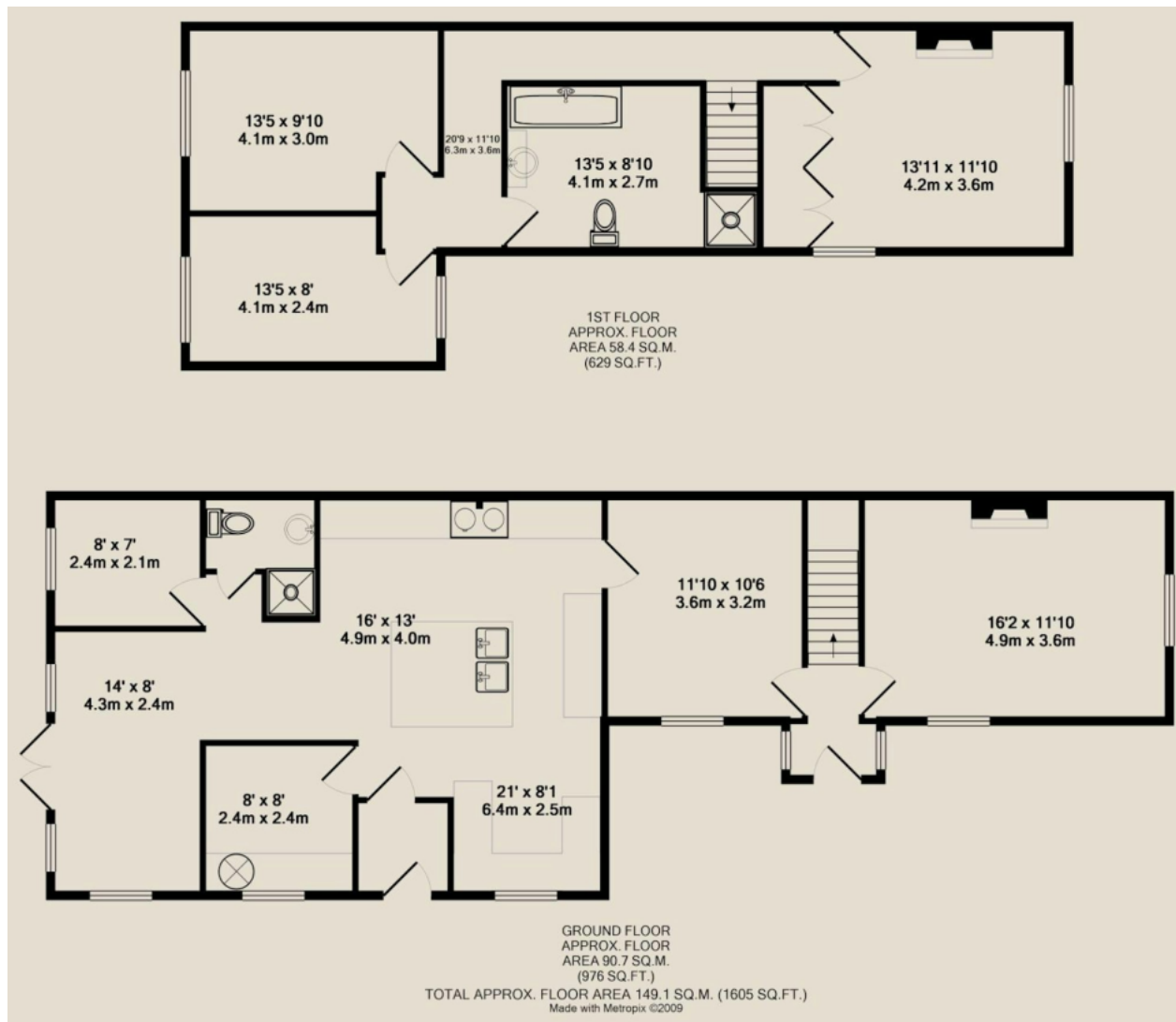
Location

The property is excellently located within easy access to both Welwyn Village and Codicote. Welwyn North train station and the A1(M) are also within a short drive.









Important Information These particulars do not constitute an offer or contract in whole or part. The statements contained herein are made without responsibility on the part of Ashtons or the vendors and they cannot be relied upon as representatives of fact. In respect of floor plans, these are for illustrative purposes only. The measurement and position of each element is approximate and must be viewed as such. Intending purchasers should therefore satisfy themselves by inspection or otherwise as to their correctness. The vendors do not make or give, and neither Ashtons nor any person in their employment has any authority to make or give, any representation or warranty whatsoever in relation to this property. We offer a wide range of services through third party providers including solicitors, surveyors, removal firms, mortgage providers and EPC suppliers. We receive additional payments for administering suppliers quoting software and making referrals. You are not under any obligations to use these services and it is your discretion whether you choose to deal with these parties or your own preferred supplier. You should be aware the average payment we received in 2024 equated to £29.76 per referral.