



1 Bedroom



1 Bathroom



1 Reception



EPC Band D

Council Tax Band:
C £2,158.08 (2025/26)

 **ashtons**
for life's great moves

Barley Croft, London Road, Woolmer Green, SG3 6HY
£1,200 PCM

A well presented, rarely available 1-bedroom cluster home with private garden & off-road parking.

Description

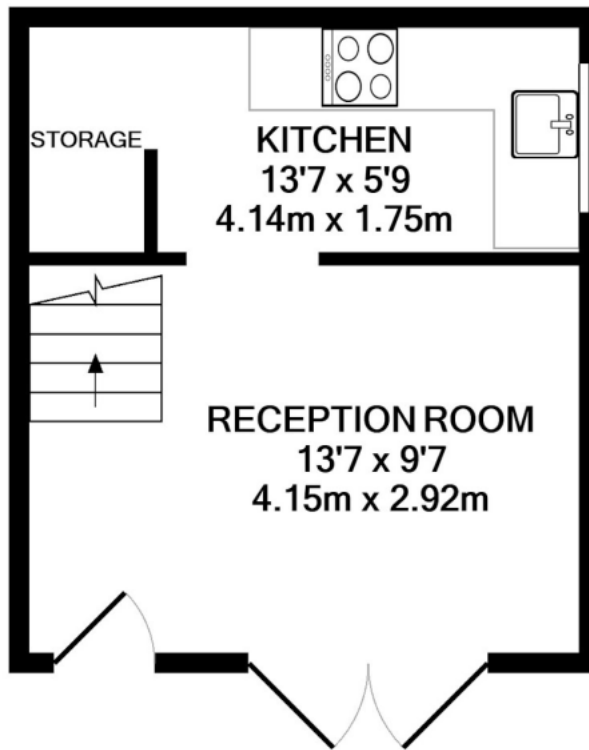
A rarely available one-bedroom house located in the popular village of Woolmer Green. This charming house offers a private garden, private parking, double glazing, fitted kitchen, living room, luxury shower room, and a double bedroom. Council Tax Band C £2,158.08 Apr 25/Mar 26.

Location

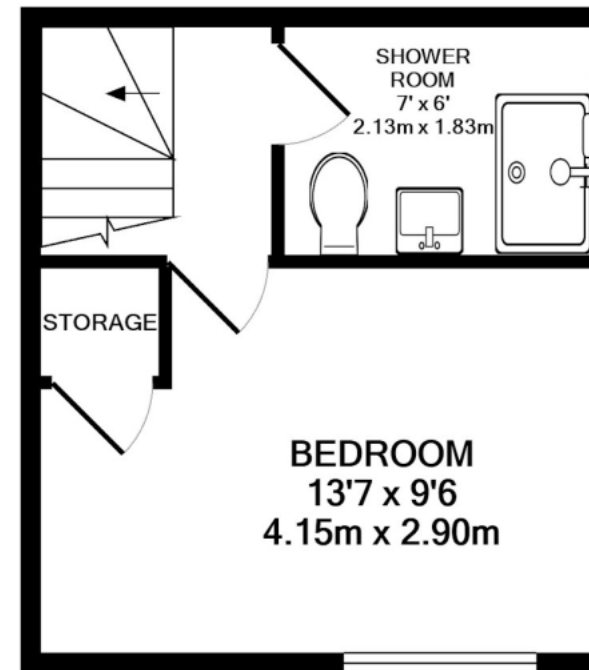
Barley Croft is located just off London Road in Woolmer Green. Woolmer Green is a village located between Knebworth and Welwyn and has excellent road links via the A1 and Knebworth mainline railway station.







GROUND FLOOR
APPROX. FLOOR
AREA 210 SQ.FT.
(19.5 SQ.M.)



1ST FLOOR
APPROX. FLOOR
AREA 210 SQ.FT.
(19.5 SQ.M.)

TOTAL APPROX. FLOOR AREA 420 SQ.FT. (39.0 SQ.M.)

This floor plan is for illustrative purposes only. The measurement and position of each element is approximate and must be viewed as such

Important Information These particulars do not constitute an offer or contract in whole or part. The statements contained herein are made without responsibility on the part of Ashtons or the vendors and they cannot be relied upon as representatives of fact. In respect of floor plans, these are for illustrative purposes only. The measurement and position of each element is approximate and must be viewed as such. Intending purchasers should therefore satisfy themselves by inspection or otherwise as to their correctness. The vendors do not make or give, and neither Ashtons nor any person in their employment has any authority to make or give, any representation or warranty whatsoever in relation to this property. We offer a wide range of services through third party providers including solicitors, surveyors, removal firms, mortgage providers and EPC suppliers. We receive additional payments for administering suppliers quoting software and making referrals. You are not under any obligations to use these services and it is your discretion whether you choose to deal with these parties or your own preferred supplier. You should be aware the average payment we received in 2024 equated to £29.76 per referral.