 2 Bedrooms

 2 Bathrooms

 1 Reception

 EPC Band C

Council Tax Band:
C £2,138.03 (2025/26)

 **ashtons**
for life's great moves

Merrifield Court, Welwyn Garden City, Hertfordshire, AL7 4SG
£1,450 PCM

A spacious two double bedroom ground floor apartment built to a high standard throughout with easy access to the town centre and mainline station. The property boasts two bathrooms, allocated parking.

Description

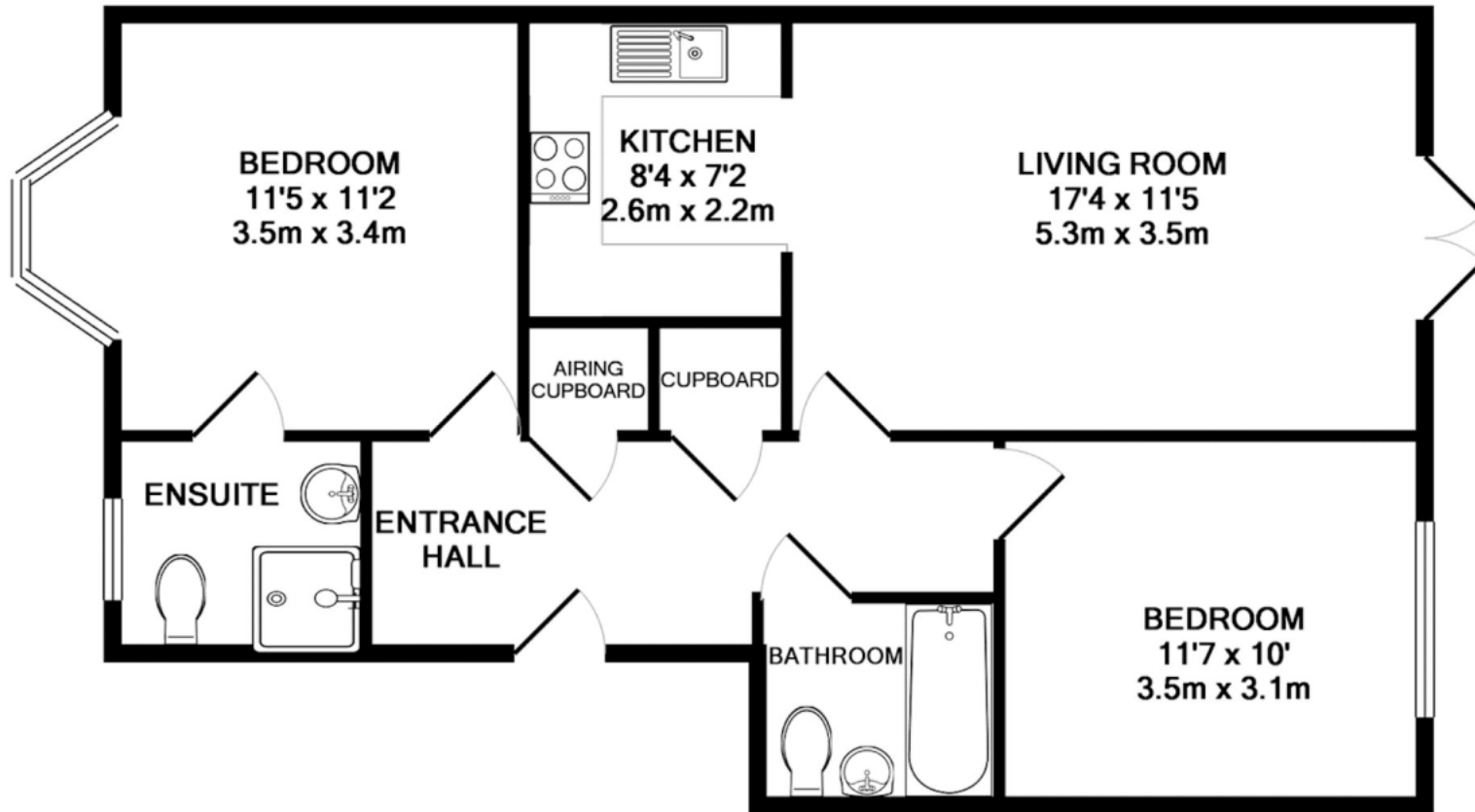
We are pleased to offer this particularly good-sized ground floor apartment benefiting from an entry phone system, electric heating, and uPVC double glazed windows. The bright and spacious accommodation includes a large living room with French doors to communal gardens. There is a modern kitchen with fitted appliances off the lounge and two double bedrooms, family bathroom, with the master bedroom benefiting from a large en-suite shower room. There are communal gardens and one allocated parking space. Council Tax: Band C (£2,138.03 April 2025 - March 2026).

Location

Merrifield Court is a particularly popular development situated on the southern outskirts of Welwyn Garden City approximately a mile and a half from the town centre's amenities, which include John Lewis and Debenhams department stores, the Howard Sho







TOTAL APPROX. FLOOR AREA 704 SQ.FT. (65.4 SQ.M.)

This floor plan is for illustrative purposes only. The measurement and position of each element is approximate and must be viewed as such.

Important Information These particulars do not constitute an offer or contract in whole or part. The statements contained herein are made without responsibility on the part of Ashtons or the vendors and they cannot be relied upon as representatives of fact. In respect of floor plans, these are for illustrative purposes only. The measurement and position of each element is approximate and must be viewed as such. Intending purchasers should therefore satisfy themselves by inspection or otherwise as to their correctness. The vendors do not make or give, and neither Ashtons nor any person in their employment has any authority to make or give, any representation or warranty whatsoever in relation to this property. We offer a wide range of services through third party providers including solicitors, surveyors, removal firms, mortgage providers and EPC suppliers. We receive additional payments for administering suppliers quoting software and making referrals. You are not under any obligations to use these services and it is your discretion whether you choose to deal with these parties or your own preferred supplier. You should be aware the average payment we received in 2024 equated to £29.76 per referral.