




-  1 Bedroom
-  2 Bathrooms
-  1 Reception
-  EPC Band D

Council Tax Band:
C £2,138.03 (2026-2027)



A spacious one bedroom modern apartment, in excellent condition throughout, perfectly placed in the heart of the town centre, just a stone's throw from the mainline rail station, which provides links to London Kings Cross in 25 minutes,

Description

This one-bedroom apartment, overlooking the manicured gardens of Parkway and Howardsgate, truly has much to offer. With its fantastic location, just a stone's throw from the town centre's amenities and transport links, spacious rooms, and modern presentation, this contemporary apartment is a superb find. It features a stylish bathroom with a three-piece suite and a generous open-plan living area, complete with modern fitted wall and base kitchen units, integrated appliances, and dining space. Postcode: AL8 6DJ Council Tax: Band C - £2,138.03 (April 2026 - March 2027)

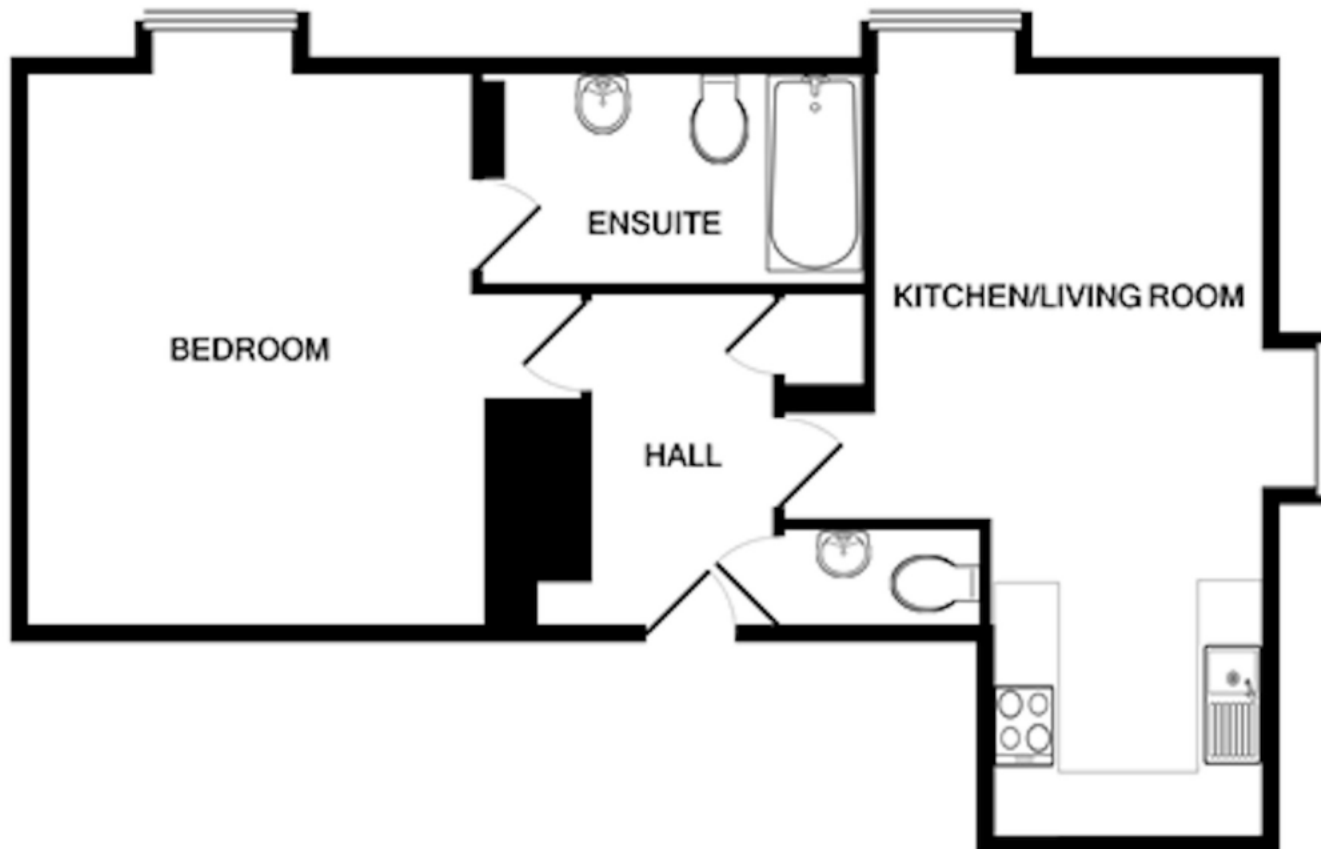
Location

Windsor House truly is in the heart of the town centre, overlooking the greenery that has become synonymous with one of the original Garden Cities. All within view are the iconic Coronation Fountain, The Howard Shopping Centre which also gives access









TOTAL APPROX. FLOOR AREA 689 SQ.FT. (64.0 SQ.M.)
Made with Metropix ©2020

Important Information These particulars do not constitute an offer or contract in whole or part. The statements contained herein are made without responsibility on the part of Ashtons or the vendors and they cannot be relied upon as representatives of fact. In respect of floor plans, these are for illustrative purposes only. The measurement and position of each element is approximate and must be viewed as such. Intending purchasers should therefore satisfy themselves by inspection or otherwise as to their correctness. The vendors do not make or give, and neither Ashtons nor any person in their employment has any authority to make or give, any representation or warranty whatsoever in relation to this property. We offer a wide range of services through third party providers including solicitors, surveyors, removal firms, mortgage providers and EPC suppliers. We receive additional payments for administering suppliers quoting software and making referrals. You are not under any obligations to use these services and it is your discretion whether you choose to deal with these parties or your own preferred supplier. You should be aware the average payment we received in 2024 equated to £29.76 per referral.