



3 Bedrooms



1 Bathroom



1 Reception



EPC Band C

Council Tax Band:
C £2,037.07 (2025/26)

A meticulously presented three-bedroom end-of-terrace residence, offering the epitome of a great family home.

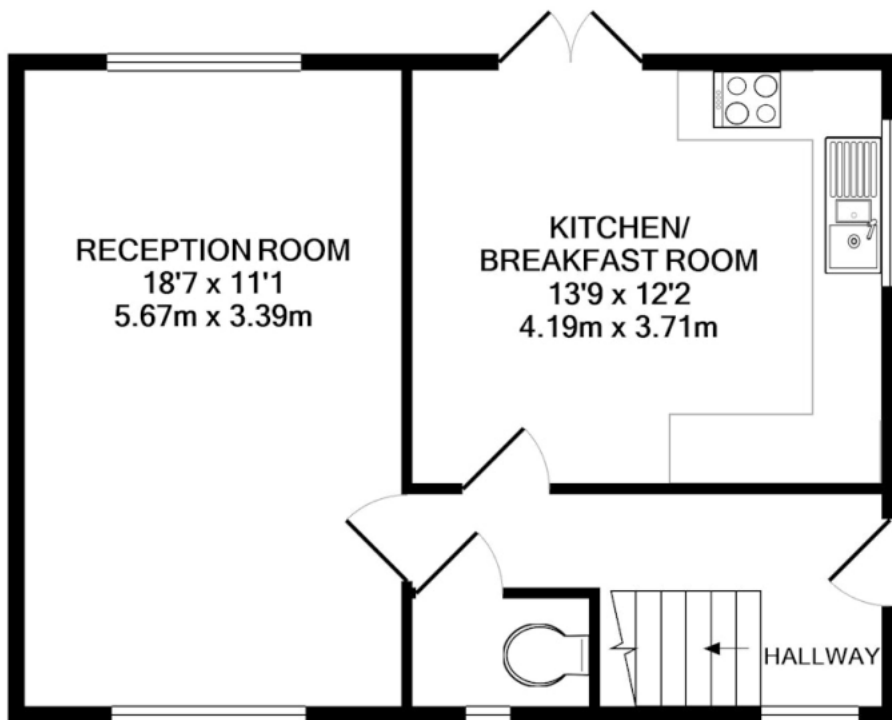
Description

Positioned for ultimate convenience, this family abode features an inviting entrance hall, a spacious living/dining room and a recently upgraded kitchen/breakfast room – perfect for modern family living with French patio doors leading to the garden. The lovely garden encompasses a well-maintained lawn and a delightful patio area, creating an ideal setting for outside summer dining. Additionally, a lawned garden to the front adds to the property's charm. The ground floor is further enhanced by a convenient downstairs cloakroom. Upstairs are three well-proportioned bedrooms and a stylish family bathroom. The property's exterior boasts a double garage, providing ample space for parking or storage, and off-street parking for several cars.

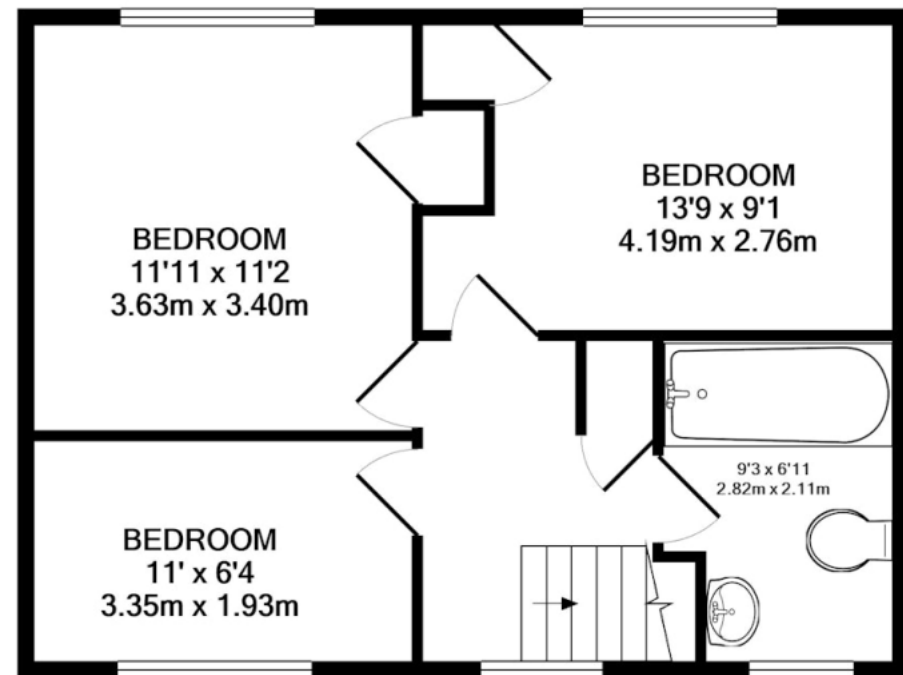








GROUND FLOOR



1ST FLOOR

Made with Metropix ©2022

Important Information These particulars do not constitute an offer or contract in whole or part. The statements contained herein are made without responsibility on the part of Ashtons or the vendors and they cannot be relied upon as representatives of fact. In respect of floor plans, these are for illustrative purposes only. The measurement and position of each element is approximate and must be viewed as such. Intending purchasers should therefore satisfy themselves by inspection or otherwise as to their correctness. The vendors do not make or give, and neither Ashtons nor any person in their employment has any authority to make or give, any representation or warranty whatsoever in relation to this property. We offer a wide range of services through third party providers including solicitors, surveyors, removal firms, mortgage providers and EPC suppliers. We receive additional payments for administering suppliers quoting software and making referrals. You are not under any obligations to use these services and it is your discretion whether you choose to deal with these parties or your own preferred supplier. You should be aware the average payment we received in 2024 equated to £29.76 per referral.