

 2 Bedrooms

 1 Bathroom

 1 Reception

 EPC Band B



Well-presented 2-bedroom first-floor apartment close to town centre and train station.

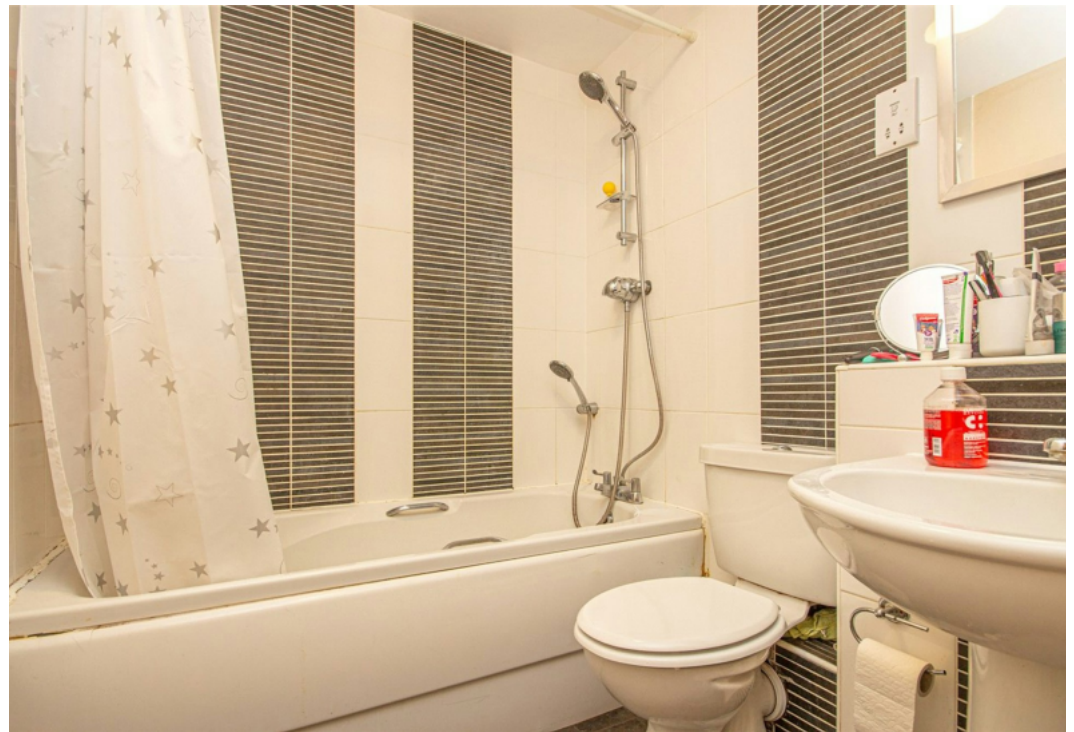
Description

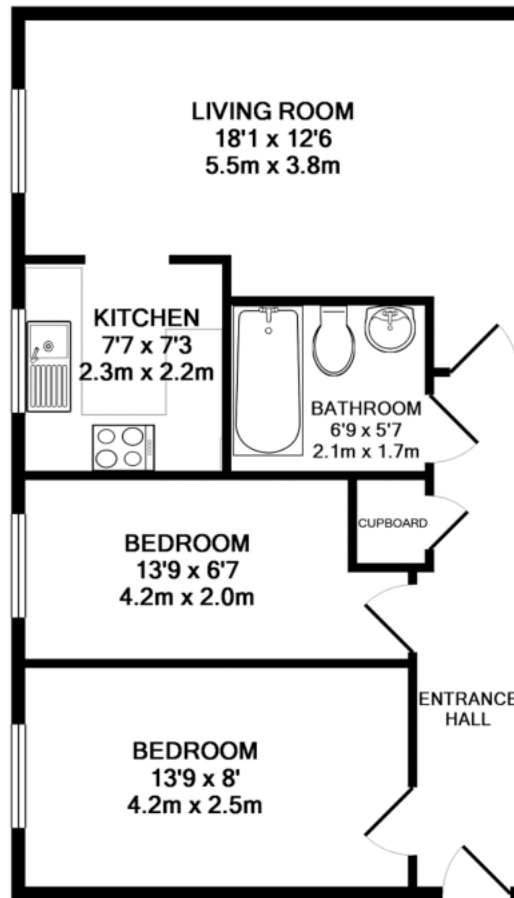
This well-presented apartment includes an entrance hall with a security entry phone system, a lounge/diner with wood flooring and an archway to a luxury fitted kitchen with appliances, including a dishwasher. There are two bedrooms, with the main bedroom benefiting from a fitted wardrobe, along with a family bathroom featuring a shower over the bath. Externally, the property boasts allocated parking and well-kept communal gardens. Council Tax: Band C - £1,941.47 (April 2024 - March 2025).

Location

Bridge Court is conveniently located on the eastern side of the town centre, about half a mile from amenities including John Lewis, Waitrose, the Howard Centre, and a mainline railway station serving Kings Cross.







TOTAL APPROX. FLOOR AREA 546 SQ.FT. (50.7 SQ.M.)

This floor plan is for illustrative purposes only. The measurement and position of each element is approximate and must be viewed as such.

Important Information These particulars do not constitute an offer or contract in whole or part. The statements contained herein are made without responsibility on the part of Ashtons or the vendors and they cannot be relied upon as representatives of fact. In respect of floor plans, these are for illustrative purposes only. The measurement and position of each element is approximate and must be viewed as such. Intending purchasers should therefore satisfy themselves by inspection or otherwise as to their correctness. The vendors do not make or give, and neither Ashtons nor any person in their employment has any authority to make or give, any representation or warranty whatsoever in relation to this property. We offer a wide range of services through third party providers including solicitors, surveyors, removal firms, mortgage providers and EPC suppliers. We receive additional payments for administering suppliers quoting software and making referrals. You are not under any obligations to use these services and it is your discretion whether you choose to deal with these parties or your own preferred supplier. You should be aware the average payment we received in 2024 equated to £29.76 per referral.