
 2 Bedrooms

 1 Bathroom

 1 Reception

 Private Garden

 Allocated

Freehold

Council Tax Band:  
D £2,405.28 (2026-2027)

Local Authority:  
Welwyn Hatfield Borough Council

 **ashtons**  
for life's great moves

Longcroft Gardens, Welwyn Garden City, AL8 6JR  
Guide price of £425,000

Two-bed home in a sought-after West Side, near Welwyn Garden City centre and station, with private garden, allocated parking and no onward chain.

### Description

A two-bedroom home in a sought-after West Side location, close to Welwyn Garden City town centre and the mainline railway station. The accommodation includes a welcoming living room and a kitchen/breakfast room at the rear with direct garden access. The first floor features two well-proportioned bedrooms and a modern family bathroom. Externally, there's a private rear garden and two allocated parking spaces. Offered with no onward chain, this property is ideal for first-time buyers, investors, or anyone seeking a convenient, well-connected location.

### Location

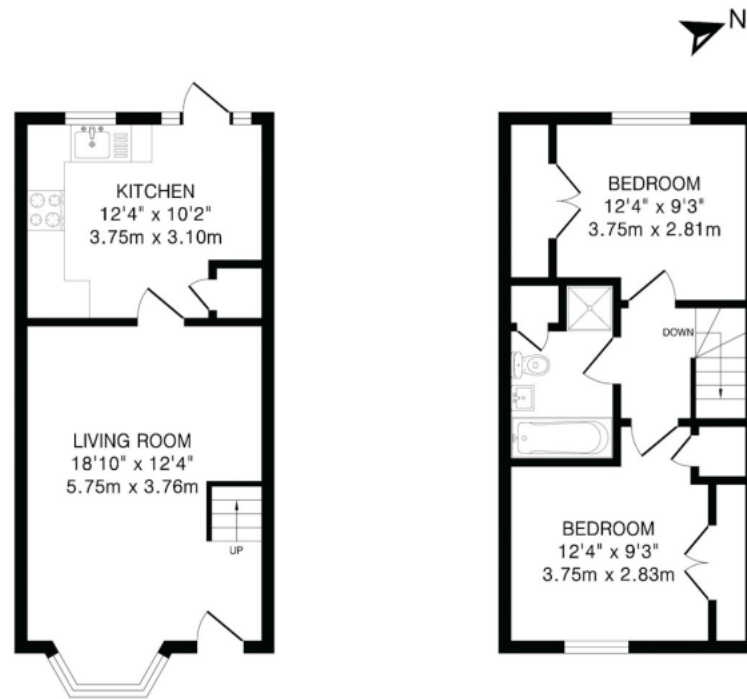
Longcroft Gardens is a popular residential cul-de-sac situated on the highly regarded West Side of Welwyn Garden City.



In compliance with the UK's Anti Money Laundering (AML) regulations, we are required to confirm the identity of all prospective buyers at the point of an offer being accepted and use a third party, Identity Verification System to do so. There is a nominal charge of £48 (per person) including VAT for this service. For more information, please refer to the terms and conditions section of our website.







Ground Floor  
346 sq.ft.(32.1 sq.m)approx.

First Floor  
335 sq.ft.(31.1 sq.m)approx.

TOTAL FLOOR AREA: 681 sq.ft.(63.2 sq.m)approx.

This floorplan is for illustration purposes only. The measurements and position of each element are approximate and must be viewed as such.

**Important Information** These particulars do not constitute an offer or contract in whole or part. The statements contained herein are made without responsibility on the part of Ashtons or the vendors and they cannot be relied upon as representatives of fact. In respect of floor plans, these are for illustrative purposes only. The measurement and position of each element is approximate and must be viewed as such. Intending purchasers should therefore satisfy themselves by inspection or otherwise as to their correctness. The vendors do not make or give, and neither Ashtons nor any person in their employment has any authority to make or give, any representation or warranty whatsoever in relation to this property. We offer a wide range of services through third party providers including solicitors, surveyors, removal firms, mortgage providers and EPC suppliers. We receive additional payments for administering suppliers quoting software and making referrals. You are not under any obligations to use these services and it is your discretion whether you choose to deal with these parties or your own preferred supplier. You should be aware the average payment we received in 2024 equated to £29.76 per referral.