



 4 Bedrooms

 2 Bathrooms

 1 Reception

 Private Garden

 Driveway

Freehold

Council Tax Band:
E £2,939.78 (2026-2027)

Local Authority:
Welwyn Hatfield Borough Council



 **ashtons**
for life's great moves

Tempsford, Welwyn Garden City, AL7 2PB
Guide price of £500,000

This attractive four-bedroom end-of-terrace townhouse is meticulously presented with an expansive layout for modern living.

Description

This attractive and meticulously presented four-bedroom end-of-terrace townhouse offers an expansive layout designed for modern living. Upon entering, you are greeted by a welcoming entrance hallway with internal access to the garage workshop/hobby room & store, a convenient downstairs cloakroom and the heart of the home, the bright and spacious kitchen and dining area with a door leading out to the rear garden. This is complemented by an airy living room, perfect for relaxation, on the first floor and the master bedroom with its own private en-suite shower room. The second floor hosts three further well-proportioned bedrooms, alongside a contemporary family bathroom. Outside, the property enjoys a well-maintained rear garden and off-street parking. There is also the additional benefit of a large shed which could be converted into a home office, if desired.

Location

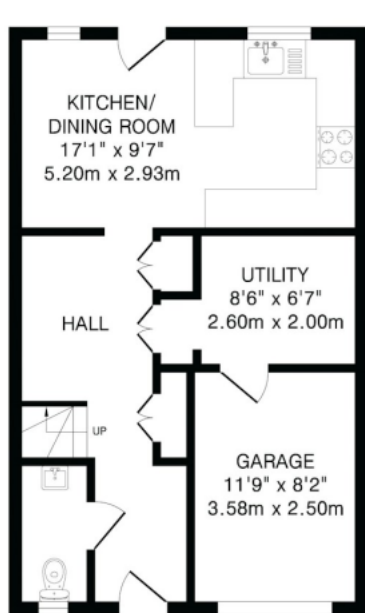
Tempsford, a cul-de-sac in Panshanger, offers schools, local shops, a doctor's surgery, Morrisons, and a bus service to the town centre with its extensive amenities and rail to Kings Cross. Nearby are Moneyhole Playing Fields.

Assured move - This property is sold with the benefit of Assured Move from Ashtons Assured Move has been designed specifically to speed up property transactions, reduce stress and create more certainty for both buyers and sellers. With Assured Move the timeframe from sale agreed to exchange of contracts can potentially be halved as the legal work is undertaken in advance of the sale. Upon acceptance of your offer, you will be requested to make a non-refundable payment of £395 plus VAT for the legal pack. The pre-approved legal pack issued to the buyer's solicitor includes: - Land Registry Title Document - Land Registry Title Plan - Pre-prepared Sale Contract - Property Information Form (TA6) - Fittings and Contents Form (TA10) - Personal Search - The pack also contains an exclusivity agreement granting the buyer a pre-agreed period of exclusivity to buy the property and preventing the seller from selling to anyone else. The payment does not form part of the purchase price, and a copy of the Reservation and Exclusivity Agreement is available upon request from Ashtons. You are advised to take legal advice before entering into the Agreement.

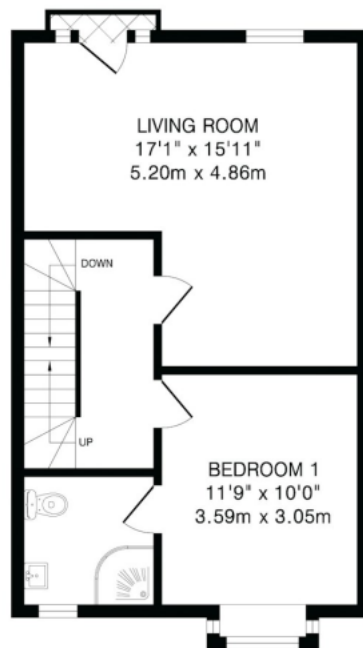




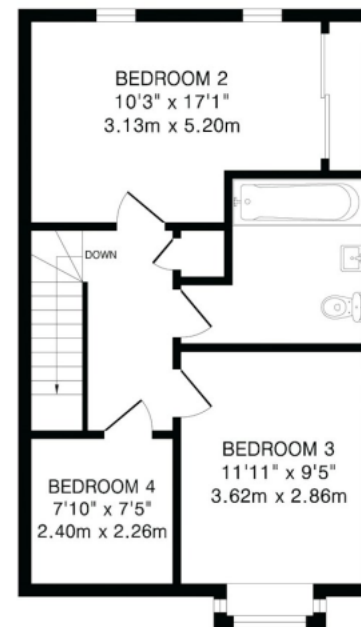




Ground Floor
491 sq.ft.(45.6 sq.m)approx.



First Floor
498 sq.ft.(46.2 sq.m)approx.



Second Floor
498 sq.ft.(46.2 sq.m)approx.

TOTAL FLOOR AREA: 1487 sq.ft.(138.0 sq.m)approx.

This floorplan is for illustration purposes only. The measurements and position of each element are approximate and must be viewed as such.

Important Information These particulars do not constitute an offer or contract in whole or part. The statements contained herein are made without responsibility on the part of Ashtons or the vendors and they cannot be relied upon as representatives of fact. In respect of floor plans, these are for illustrative purposes only. The measurement and position of each element is approximate and must be viewed as such. Intending purchasers should therefore satisfy themselves by inspection or otherwise as to their correctness. The vendors do not make or give, and neither Ashtons nor any person in their employment has any authority to make or give, any representation or warranty whatsoever in relation to this property. We offer a wide range of services through third party providers including solicitors, surveyors, removal firms, mortgage providers and EPC suppliers. We receive additional payments for administering suppliers quoting software and making referrals. You are not under any obligations to use these services and it is your discretion whether you choose to deal with these parties or your own preferred supplier. You should be aware the average payment we received in 2024 equated to £29.76 per referral.