

 5 Bedrooms

 2 Bathrooms

 4 Receptions

 Private Garden

 Garage/Drive

Freehold

Council Tax Band:  
F £3,470.03 (2026-2027)

Local Authority:  
East Hertfordshire



 **ashtons**  
for life's great moves

White Horse Lane, Burnham Green, Welwyn, AL6 0HA  
Guide price of £925,000

A substantial, gated modern family home with generous gardens, a large driveway, and garage, located by Burnham Green's attractive village green.

### Description

This beautifully presented, five-bedroom property provides generous and versatile living space over three floors, ideal for families or those looking to upsize. A welcoming hallway firstly presents doors to the cosy sitting room with log-burner and access to the kitchen on the left and to the spacious living room with patio doors to the garden on the right. The property's large, remarkably bright dining/play area at the rear leads round into the sleek, modern, fully-integrated kitchen with a superb island. A sizeable utility room with W/C is conveniently located next to the kitchen. The generous main bedroom with fitted wardrobes and a smart en-suite bath and shower room, along with two further bedrooms are located on the first floor. A bright, stylish family bathroom on this floor, with an expansive separate shower unit, serves these two bedrooms and the two double rooms on the second floor. Both generous bedrooms on the second floor benefit from substantial eaves storage and deep fitted wardrobes. Externally, the property offers a large private driveway, a detached garage, and attractive, well-kept front and rear gardens with sizeable patio areas.

### Location

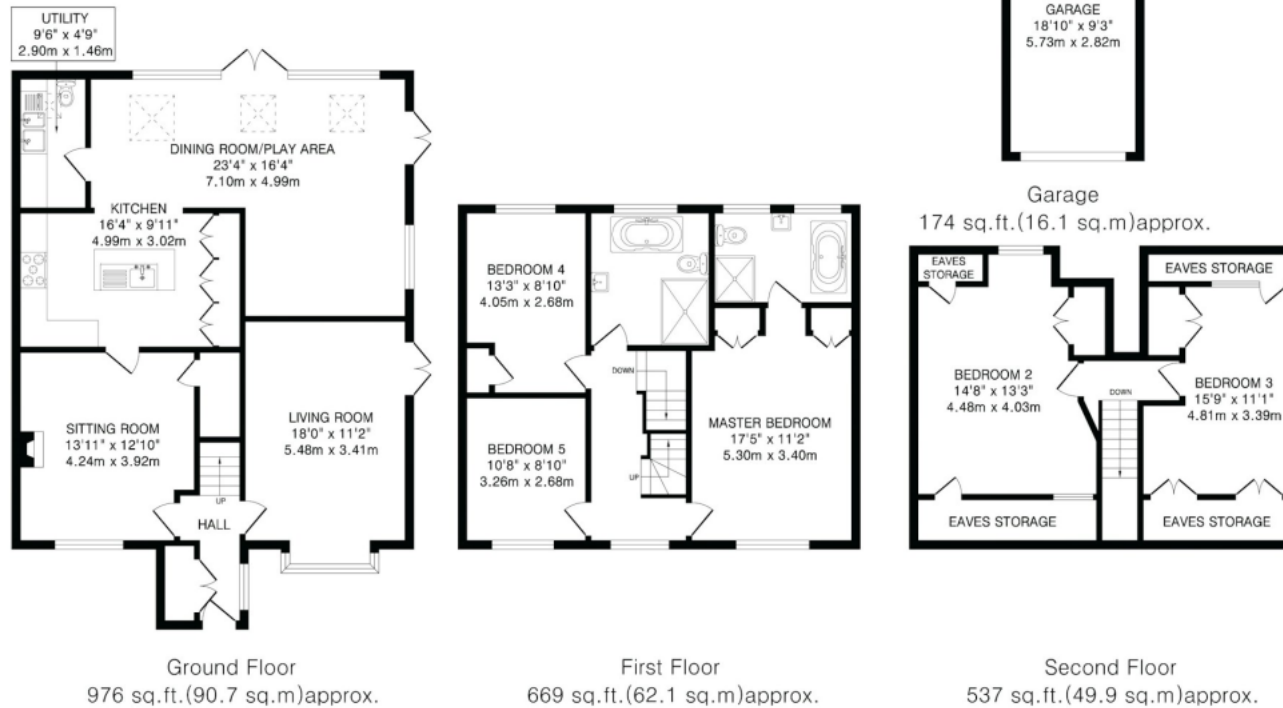
The charming, desirable village of Burnham Green Road is situated adjacent to Tewin Wood and is surrounded by beautiful open countryside. The area offers a range of well-renowned local pubs and restaurants.



Buyers Information: - In compliance with the UK's Anti Money Laundering (AML) regulations, we are required to confirm the identity of all prospective buyers at the point of an offer being accepted and use a third party, Identity Verification System to do so. There is a nominal charge of £48 (per person) including VAT for this service. For more information, please refer to the terms and conditions section of our website.







TOTAL FLOOR AREA: 2356 sq.ft.(218.8 sq.m)approx.

This floorplan is for illustration purposes only. The measurements and position of each element are approximate and must be viewed as such.

**Important Information** These particulars do not constitute an offer or contract in whole or part. The statements contained herein are made without responsibility on the part of Ashtons or the vendors and they cannot be relied upon as representatives of fact. In respect of floor plans, these are for illustrative purposes only. The measurement and position of each element is approximate and must be viewed as such. Intending purchasers should therefore satisfy themselves by inspection or otherwise as to their correctness. The vendors do not make or give, and neither Ashtons nor any person in their employment has any authority to make or give, any representation or warranty whatsoever in relation to this property. We offer a wide range of services through third party providers including solicitors, surveyors, removal firms, mortgage providers and EPC suppliers. We receive additional payments for administering suppliers quoting software and making referrals. You are not under any obligations to use these services and it is your discretion whether you choose to deal with these parties or your own preferred supplier. You should be aware the average payment we received in 2024 equated to £29.76 per referral.