


 3 Bedrooms

 1 Bathroom

 1 Reception

 South Facing

 On-Street

 EPC Band C

Freehold

Council Tax Band:
C £2,138.03 (2026-2027)

Local Authority:
Welwyn Hatfield Borough Council



 **ashtons**
for life's great moves

Carve Ley, Welwyn Garden City, AL7 3HH
Guide price of £350,000

Light, spacious 3-bed end terrace home needing cosmetic updates. Cash buyers chain free.

Description

This well-located and spacious three-bedroom home is an excellent investment opportunity. The property features a large porch, a bright lounge, dining room, kitchen, and utility space on the ground floor, with three generous bedrooms, a bathroom, and separate WC upstairs. Outside, there's an enclosed frontage and a good-sized south-facing rear garden with patio, lawn, summerhouse/storage shed, greenhouse, and gravelled seating area. Agents Note: The property has spray foam insulation in the loft and is marketed for cash buyers only.

Location

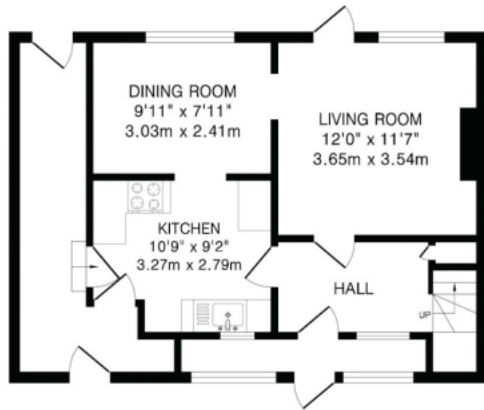
Carve Ley, a quiet residential area in Welwyn Garden City, offers suburban living with easy access to schools, shops, and green spaces. The town centre and mainline station provide fast London links, while the A1(M) enhances commuter appeal.



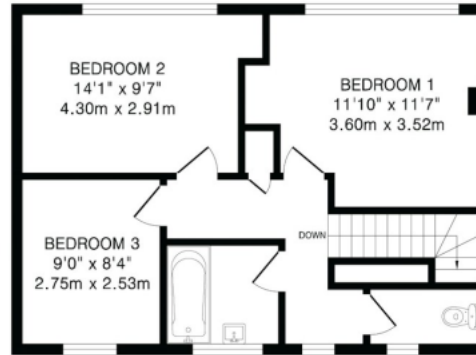
Buyers Information: - In compliance with the UK's Anti Money Laundering (AML) regulations, we are required to confirm the identity of all prospective buyers at the point of an offer being accepted and use a third party, Identity Verification System to do so. There is a nominal charge of £48 (per person) including VAT for this service. For more information, please refer to the terms and conditions section of our website.



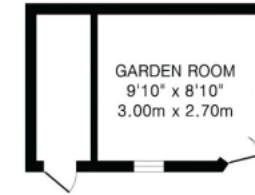




Ground Floor
548 sq.ft.(50.9 sq.m)approx.



First Floor
548 sq.ft.(50.9 sq.m)approx.



Outbuilding
115 sq.ft.(10.7 sq.m)approx.

TOTAL FLOOR AREA: 1211 sq.ft.(112.5 sq.m)approx.
This floorplan is for illustration purposes only. The measurements and position of each element are approximate and must be viewed as such.

Important Information These particulars do not constitute an offer or contract in whole or part. The statements contained herein are made without responsibility on the part of Ashtons or the vendors and they cannot be relied upon as representatives of fact. In respect of floor plans, these are for illustrative purposes only. The measurement and position of each element is approximate and must be viewed as such. Intending purchasers should therefore satisfy themselves by inspection or otherwise as to their correctness. The vendors do not make or give, and neither Ashtons nor any person in their employment has any authority to make or give, any representation or warranty whatsoever in relation to this property. We offer a wide range of services through third party providers including solicitors, surveyors, removal firms, mortgage providers and EPC suppliers. We receive additional payments for administering suppliers quoting software and making referrals. You are not under any obligations to use these services and it is your discretion whether you choose to deal with these parties or your own preferred supplier. You should be aware the average payment we received in 2024 equated to £29.76 per referral.