

 3 Bedrooms

 2 Bathrooms

 2 Receptions

 South-East

 Driveway

Freehold

Council Tax Band:
D £2,316.95 (2025-2026)

Local Authority:
Welwyn Hatfield Borough Council



Beautifully presented 3-bed semi-detached house, extended for more living space, with stunning rear views over fields.

Description

A beautifully presented three-bedroom semi-detached home in the sought-after village of Woolmer Green. This stunning property has been finished to a high standard throughout, offering a warm and inviting reception room, ideal for relaxing evenings. The heart of the home is the bright and spacious kitchen/dining area, featuring a skylight and striking bi-fold doors that open to uninterrupted views over open fields - perfect for entertaining and family life. Additional ground floor highlights include a separate utility room and a convenient downstairs cloakroom. Upstairs, three well-proportioned bedrooms are served by a sleek and contemporary family bathroom. Externally, the southeast-facing rear garden is beautifully maintained, enjoying plenty of sunlight throughout the day. A modern garden room adds further versatility, ideal as a home office, gym, or studio. To the front, the property benefits from hardstanding driveway parking for multiple vehicles.

Location

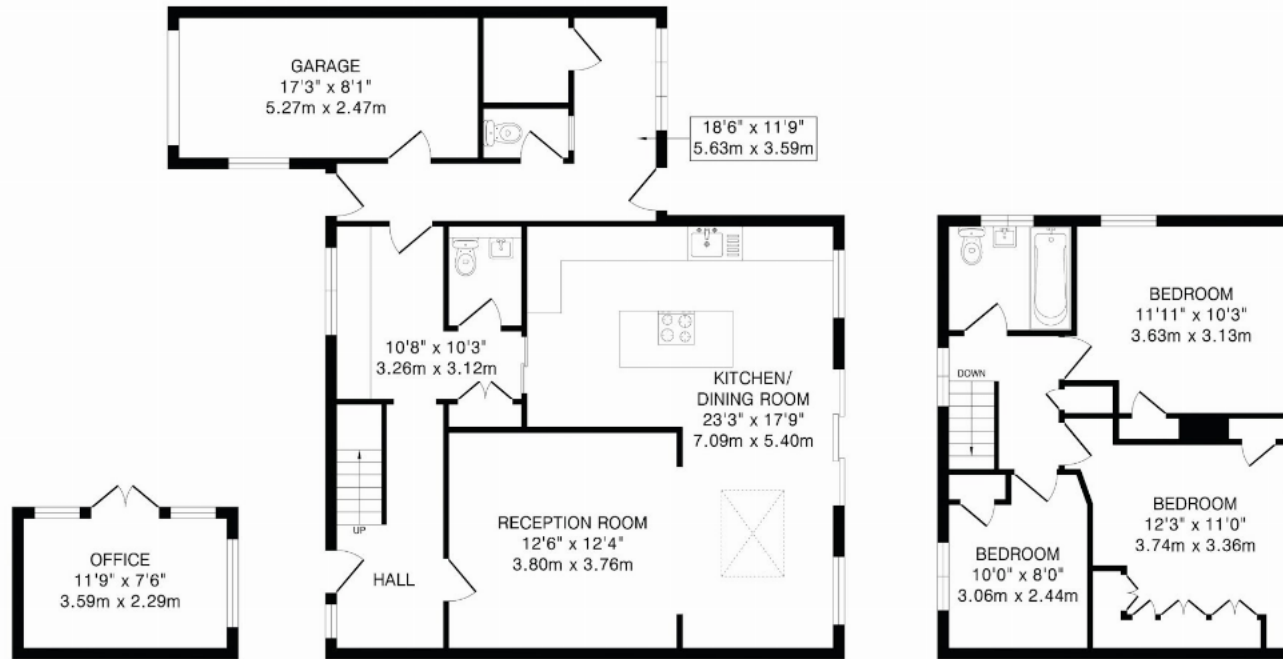
Located in Woolmer Green, Broadfield Road offers a peaceful setting with easy access to local amenities, top schools, and excellent transport. Close to Knebworth and Welwyn North stations for London links, surrounded by scenic countryside.



Buyers Information: - In compliance with the UK's Anti Money Laundering (AML) regulations, we are required to confirm the identity of all prospective buyers at the point of an offer being accepted and use a third party, Identity Verification System to do so. There is a nominal charge of £48 (per person) including VAT for this service. For more information, please refer to the terms and conditions section of our website.







TOTAL FLOOR AREA: 1567 sq.ft.(145.5 sq.m)approx.

This floorplan is for illustration purposes only. The measurements and position of each element are approximate and must be viewed as such.

Important Information These particulars do not constitute an offer or contract in whole or part. The statements contained herein are made without responsibility on the part of Ashtons or the vendors and they cannot be relied upon as representatives of fact. In respect of floor plans, these are for illustrative purposes only. The measurement and position of each element is approximate and must be viewed as such. Intending purchasers should therefore satisfy themselves by inspection or otherwise as to their correctness. The vendors do not make or give, and neither Ashtons nor any person in their employment has any authority to make or give, any representation or warranty whatsoever in relation to this property. We offer a wide range of services through third party providers including solicitors, surveyors, removal firms, mortgage providers and EPC suppliers. We receive additional payments for administering suppliers quoting software and making referrals. You are not under any obligations to use these services and it is your discretion whether you choose to deal with these parties or your own preferred supplier. You should be aware the average payment we received in 2024 equated to £29.76 per referral.