



4 bedrooms



2 bathrooms



2 receptions



East-Facing



Garage & Driveway

Freehold

Council Tax Band:  
D £2,371.27 (2025-2026)

Local Authority:  
Welwyn/Hatfield





Discover a unique family home crafted by its owners, offering exceptional, adaptable living space with a vibrant atmosphere.

### Description

Occupying a generous corner plot, this remarkable family home exudes warmth and style throughout. A broad entrance hall leads to a living room and a spacious snug, currently a cosy cinema room with a wood burner and electric velux windows. Bi-folding doors open to an al-fresco dining terrace with a fireplace. The large kitchen/dining room, accessed via the terrace, is perfect for entertaining. It includes integrated appliances, an island with storage, and a wine cooler. A utility area adjacent provides more storage. The garage/games room offers a versatile space, housing motorbikes, a bar, and a gym, with garden access through French doors. Upstairs, the main bedroom boasts countryside views, a vaulted ceiling, rain sensor velux windows, and an en-suite. Three more bedrooms share a modern bathroom. The sunny rear garden features a decked area with a mirrored waterfall, a luxurious garden room with en-suite, and a BBQ area. The front drive provides parking for 2-3 vehicles.

### Location

Norman Road is just 0.25 miles from Welwyn Village's amenities like a doctor's surgery, shops, pubs, and schools. The A1(M) is nearby, and Welwyn North station, 2 miles away, offers fast, frequent London services.

#### Buyers Information

In compliance with the UK's Anti Money Laundering (AML) regulations, we are required to confirm the identity of all prospective buyers at the point of an offer being accepted and use a third party, Identity Verification System to do so. There is a nominal charge of £48 (per person) including VAT for this service. For more information, please refer to the terms and conditions section of our website.



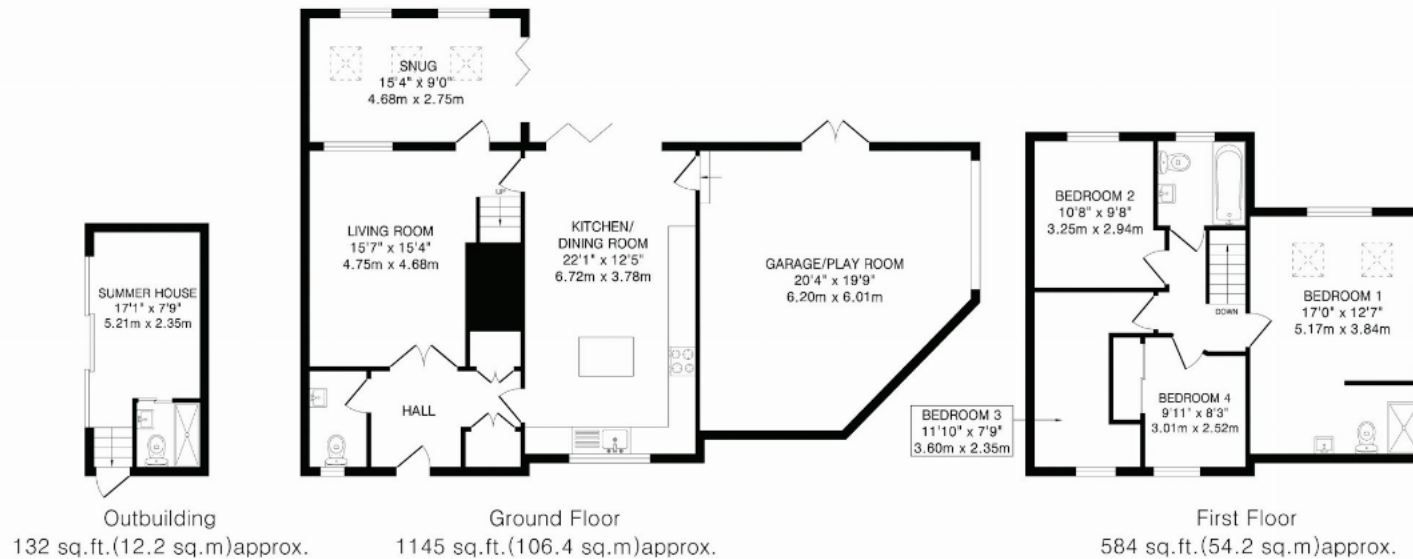












**TOTAL FLOOR AREA: 1861 sq.ft.(172.8 sq.m)approx.**  
This floorplan is for illustration purposes only. The measurements and position of each element are approximate and must be viewed as such.

**Important Information** These particulars do not constitute an offer or contract in whole or part. The statements contained herein are made without responsibility on the part of Ashtons or the vendors and they cannot be relied upon as representatives of fact. In respect of floor plans, these are for illustrative purposes only. The measurement and position of each element is approximate and must be viewed as such. Intending purchasers should therefore satisfy themselves by inspection or otherwise as to their correctness. The vendors do not make or give, and neither Ashtons nor any person in their employment has any authority to make or give, any representation or warranty whatsoever in relation to this property. We offer a wide range of services through third party providers including solicitors, surveyors, removal firms, mortgage providers and EPC suppliers. We receive additional payments for administering suppliers quoting software and making referrals. You are not under any obligations to use these services and it is your discretion whether you choose to deal with these parties or your own preferred supplier. You should be aware the average payment we received in 2024 equated to £29.76 per referral.