
 3 Bedrooms

 1 Bathroom

 2 Receptions

 EPC Band D

Council Tax Band:
D £2,405.28 (2026/ 2027)

 **ashtons**
for life's great moves

Blythway, Welwyn Garden City, Hertfordshire, AL7 1DS
£2,000 PCM

Charming 3-bed semi-detached home with a spacious modern kitchen/breakfast room and a stunning garden.

Description

This lovely property features a modern fitted kitchen/breakfast room with a separate utility room including appliances and a spacious lounge at the rear with French doors opening to the garden. The property also benefits from a downstairs cloakroom. Upstairs, there are three good-sized bedrooms and a modern family bathroom. Externally, the home boasts a good-sized rear garden with communal residential off-street parking at the front.

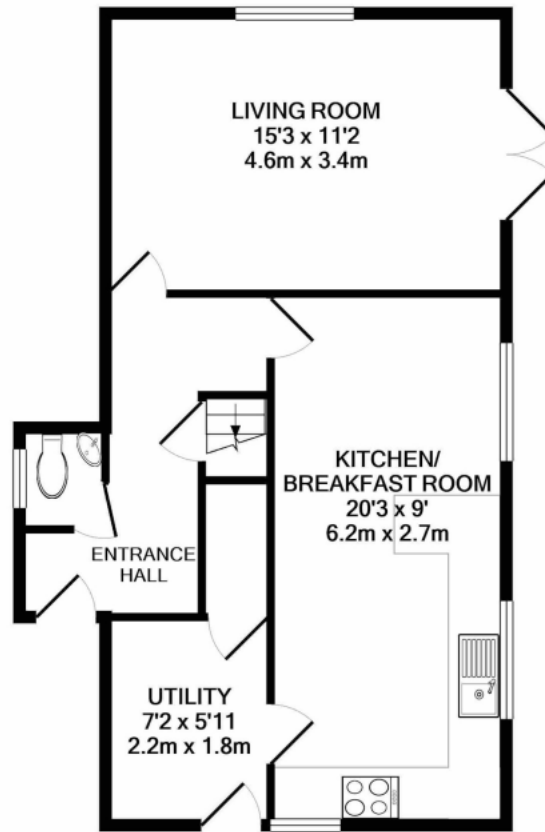
Location

Blythway is in the Haldens area of Welwyn Garden City, within walking distance to local amenities and public transport. It offers easy access to the town centre and mainline station (Welwyn Garden City to Kings Cross 28 minutes).

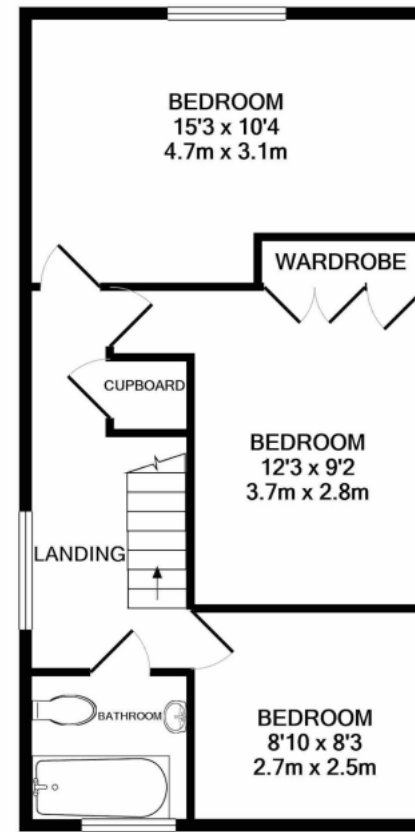








GROUND FLOOR
APPROX. FLOOR
AREA 497 SQ.FT.
(46.2 SQ.M.)



1ST FLOOR
APPROX. FLOOR
AREA 474 SQ.FT.
(44.0 SQ.M.)

TOTAL APPROX. FLOOR AREA 971 SQ.FT. (90.2 SQ.M.)
Made with Metropix ©2020

Important Information These particulars do not constitute an offer or contract in whole or part. The statements contained herein are made without responsibility on the part of Ashtons or the vendors and they cannot be relied upon as representatives of fact. In respect of floor plans, these are for illustrative purposes only. The measurement and position of each element is approximate and must be viewed as such. Intending purchasers should therefore satisfy themselves by inspection or otherwise as to their correctness. The vendors do not make or give, and neither Ashtons nor any person in their employment has any authority to make or give, any representation or warranty whatsoever in relation to this property. We offer a wide range of services through third party providers including solicitors, surveyors, removal firms, mortgage providers and EPC suppliers. We receive additional payments for administering suppliers quoting software and making referrals. You are not under any obligations to use these services and it is your discretion whether you choose to deal with these parties or your own preferred supplier. You should be aware the average payment we received in 2024 equated to £29.76 per referral.