 2 Bedrooms

 1 Bathroom

 1 Reception

 EPC Band C

Council Tax Band:  
D £0.00 ()

 **ashtons**  
for life's great moves

High Street, Redbourn, St. Albans, AL3 7LW  
£2,000 PCM

## High-spec modern two-bed cottage in quaint Redbourn Village.

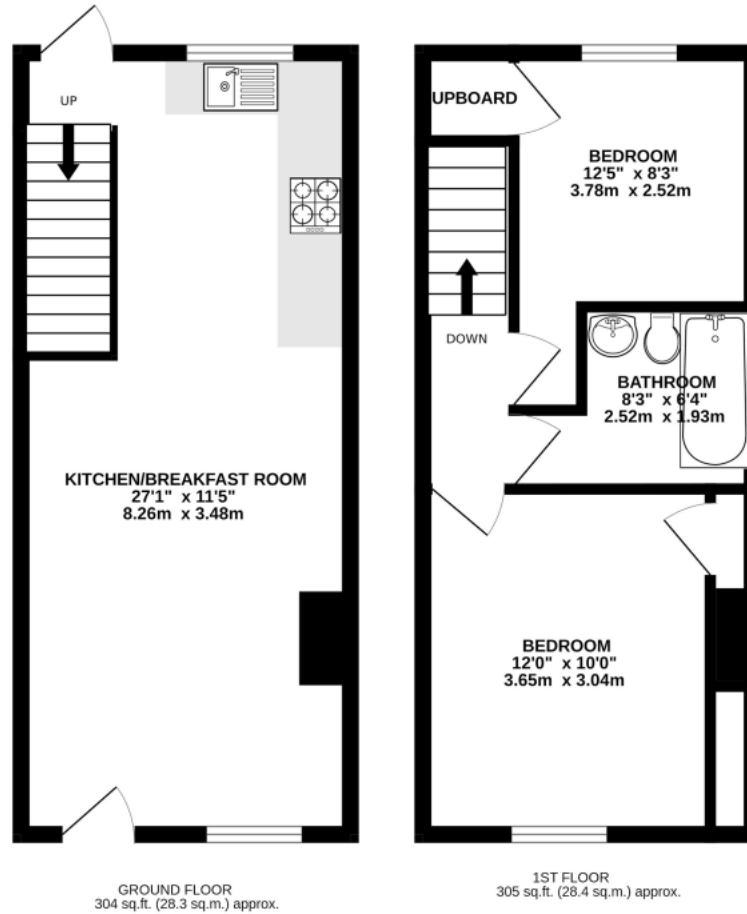
### Description

This beautifully renovated two-bedroom cottage, situated on Redbourn High Street, offers a high specification finish with quality furniture. Upon entering, you are welcomed into a bright living room, tastefully decorated and featuring a charming stone fireplace with contemporary lighting. The modern kitchen is equipped with integrated appliances and offers ample storage and worktop space, overlooking the well-maintained rear garden. Upstairs, the principal bedroom features fitted wardrobes, additional storage, and views over the High Street. The second bedroom includes fitted storage and views over the rear garden, served by a high-specification tiled bathroom with a bath and overhead shower. Additional benefits include on-street parking. Please note, there is a right of access through the rear garden for the neighbouring property.









TOTAL FLOOR AREA : 610 sq.ft. (56.7 sq.m.) approx.

This floorplan is for illustration purposes only, the measurements and position of each element are approximate and must be viewed as such

**Important Information** These particulars do not constitute an offer or contract in whole or part. The statements contained herein are made without responsibility on the part of Ashtons or the vendors and they cannot be relied upon as representatives of fact. In respect of floor plans, these are for illustrative purposes only. The measurement and position of each element is approximate and must be viewed as such. Intending purchasers should therefore satisfy themselves by inspection or otherwise as to their correctness. The vendors do not make or give, and neither Ashtons nor any person in their employment has any authority to make or give, any representation or warranty whatsoever in relation to this property. We offer a wide range of services through third party providers including solicitors, surveyors, removal firms, mortgage providers and EPC suppliers. We receive additional payments for administering suppliers quoting software and making referrals. You are not under any obligations to use these services and it is your discretion whether you choose to deal with these parties or your own preferred supplier. You should be aware the average payment we received in 2024 equated to £29.76 per referral.