



3 bedrooms



1 bathroom



2 receptions



Private Garden



Off-Street Parking

Freehold

Council Tax Band:
F £3,243.86 (2024/25)

Local Authority:
St Albans Council



Charming Grade II listed 3-bed property with off-street parking and pretty garden, on Redbourn High St, close to village amenities.

Description

This delightful double fronted period home is Grade II listed, offering spacious living with an abundance of character features. The entrance hall leads to two large living rooms at the front; the dining room has a feature fireplace, and the living room connects to a 'galley' style kitchen at the rear, fully fitted with units, a built-in oven, hob, and space for appliances. A hallway with garden access leads to a bathroom with a freestanding Victorian bath and a basement room. Upstairs, there are three good-sized bedrooms with eaves storage in the Principal bedroom. The garden is private with mature shrubs and trees, mainly laid to lawn, with a patio and large outbuilding for use as a home office or gym. A driveway offers off-street parking, and there's a fenced area with a summerhouse and seating.

Location

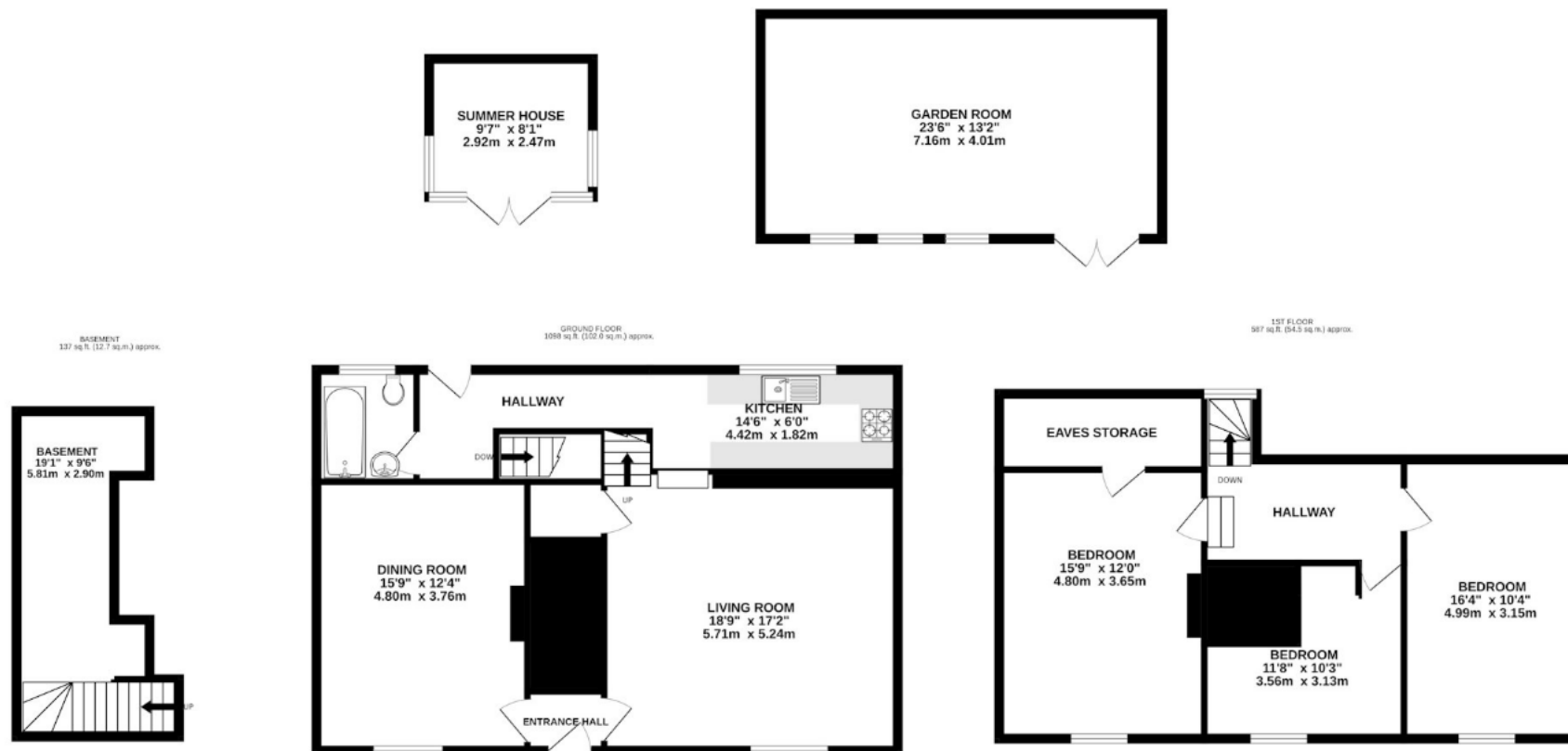
Located on High Street, Redbourn, a picturesque Hertfordshire village with great amenities. Nearby Harpenden and St Albans offer shopping and leisure. M1, Luton Airport and rail services are close by.



Buyers Information: - In compliance with the UK's Anti Money Laundering (AML) regulations, we are required to confirm the identity of all prospective buyers at the point of an offer being accepted and use a third party, Identity Verification System to do so. There is a nominal charge of £48 (per person) including VAT for this service. For more information, please refer to the terms and conditions section of our website.







TOTAL FLOOR AREA : 1822 sq.ft. (169.3 sq.m.) approx.

This floorplan is for illustrative purposes only. The measurement and position of each element is approximate and must be viewed as such.

Important Information These particulars do not constitute an offer or contract in whole or part. The statements contained herein are made without responsibility on the part of Ashtons or the vendors and they cannot be relied upon as representatives of fact. In respect of floor plans, these are for illustrative purposes only. The measurement and position of each element is approximate and must be viewed as such. Intending purchasers should therefore satisfy themselves by inspection or otherwise as to their correctness. The vendors do not make or give, and neither Ashtons nor any person in their employment has any authority to make or give, any representation or warranty whatsoever in relation to this property. We offer a wide range of services through third party providers including solicitors, surveyors, removal firms, mortgage providers and EPC suppliers. We receive additional payments for administering suppliers quoting software and making referrals. You are not under any obligations to use these services and it is your discretion whether you choose to deal with these parties or your own preferred supplier. You should be aware the average payment we received in 2024 equated to £29.76 per referral.