



4 bedrooms



2 bathrooms



3 receptions



Landscaped



Off Street Parking



EPC Band C

Freehold

Council Tax Band:
F £3,407.63 (2025/26)

Local Authority:
St Albans Council



Superb extended 4-bedroom family home with spacious, beautifully presented accommodation, close to village amenities.

Description

Stunning extended family home, well located within the catchment area for excellent schools with off-street parking and a landscaped rear garden. An attractive hallway leads into a large living room with French doors opening into a stunning Kitchen/diner at the rear with bi-fold doors leading out to the garden. The kitchen is fitted with a stylish range of hi-gloss units with built-in appliances and breakfast bar. A family room also with bi-fold doors sits just off. In addition there is a study, ideal for homeworking, a utility room and guest cloakroom on this level. Upstairs there are four good size bedrooms all with built-in wardrobes. The principal bedroom benefits from a dressing room and luxurious ensuite bathroom. A further modern tiled family bathroom serves the remaining bedrooms. Outside to the front a large driveway provides off-street parking for up to four cars and an EV charger at the side of the house. The rear garden is attractively landscaped with a generous patio area and steps up to a further raised garden area, laid with artificial grass for low-maintenance.

Location

The property is situated in a popular cul-de-sac a short walk from village amenities. The nearby towns of Harpenden and St Albans are just a short drive away and offer wider amenities, excellent secondary schools and high speed rail links into London

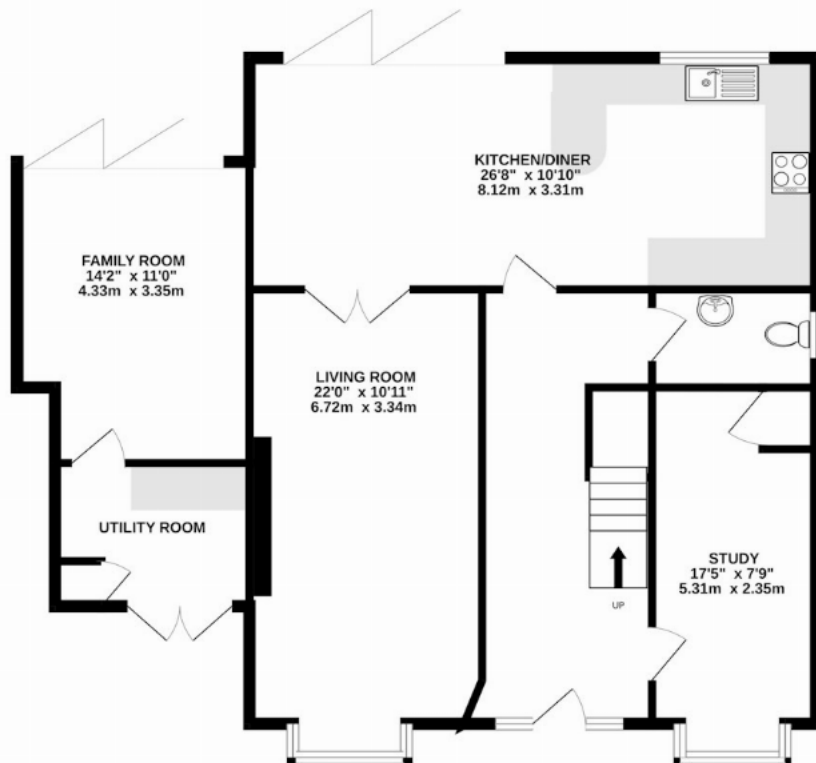


Buyers Information: - In compliance with the UK's Anti Money Laundering (AML) regulations, we are required to confirm the identity of all prospective buyers at the point of an offer being accepted and use a third party, Identity Verification System to do so. There is a nominal charge of £48 (per person) including VAT for this service. For more information, please refer to the terms and conditions section of our website.

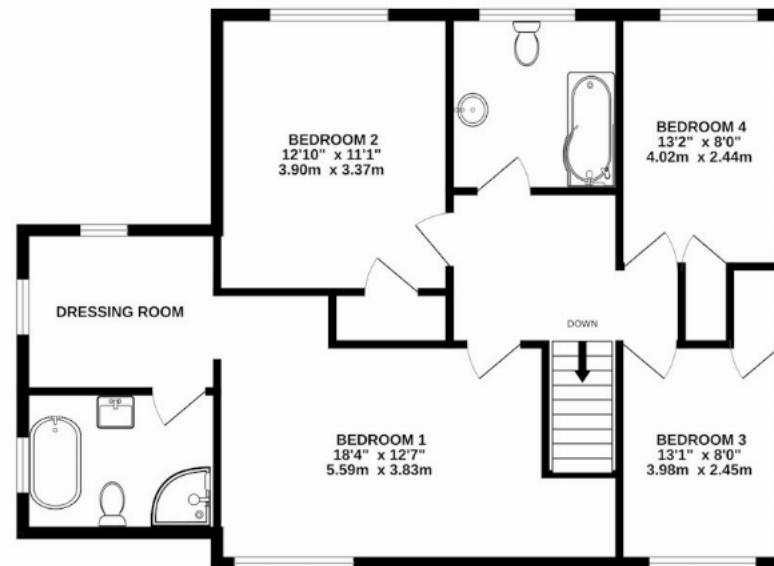




GROUND FLOOR
1018 sq.ft. (94.6 sq.m.) approx.



1ST FLOOR
739 sq.ft. (68.7 sq.m.) approx.



TOTAL FLOOR AREA : 1758 sq.ft. (163.3 sq.m.) approx.

This floorplan is for illustrative purposes only. The measurement and position of each element is approximate and must be viewed as such.

Important Information These particulars do not constitute an offer or contract in whole or part. The statements contained herein are made without responsibility on the part of Ashtons or the vendors and they cannot be relied upon as representatives of fact. In respect of floor plans, these are for illustrative purposes only. The measurement and position of each element is approximate and must be viewed as such. Intending purchasers should therefore satisfy themselves by inspection or otherwise as to their correctness. The vendors do not make or give, and neither Ashtons nor any person in their employment has any authority to make or give, any representation or warranty whatsoever in relation to this property. We offer a wide range of services through third party providers including solicitors, surveyors, removal firms, mortgage providers and EPC suppliers. We receive additional payments for administering suppliers quoting software and making referrals. You are not under any obligations to use these services and it is your discretion whether you choose to deal with these parties or your own preferred supplier. You should be aware the average payment we received in 2024 equated to £29.76 per referral.