



 3 Bedrooms

 1 Bathroom

 1 Reception

 Communal

 Garage and Parking

 EPC Band E

Freehold

Council Tax Band:  
E £2,910.60 (2026/27)

Local Authority:  
Dacorum Council



 **ashtons**  
for life's great moves

Chequers End, Gaddesden Row, Hemel Hempstead, HP2 6HH  
Asking price of £475,000

Three-bedroom end terrace with stunning countryside views, nestled in an idyllic rural setting in this sought-after hamlet.

### Description

This splendid home boasts spacious accommodation with access to beautiful communal gardens offering spectacular views. Upon entry, a generous living/dining room, extending over 26ft, welcomes you with oak flooring, divided by a central staircase. At the rear, discover a conservatory and an attractive, fully fitted kitchen featuring integrated oven and hob, plus space for appliances. A cloakroom with WC complements the ground floor. Upstairs, three bedrooms provide lovely views and are served by a stylish modern bathroom. The property also benefits from a newly fitted boiler and oil tank. Externally, the immaculately maintained communal gardens are a standout feature, complete with large lawns, diverse flower beds, and several seating areas for tranquillity. It also includes a garage and private off-street parking. Garden maintenance, shared septic tank servicing, insurance, and window cleaning are covered by a modest monthly fee (£75 pcm via the Chequers' Association). This property is rarely available, so early viewing is advised.

### Location

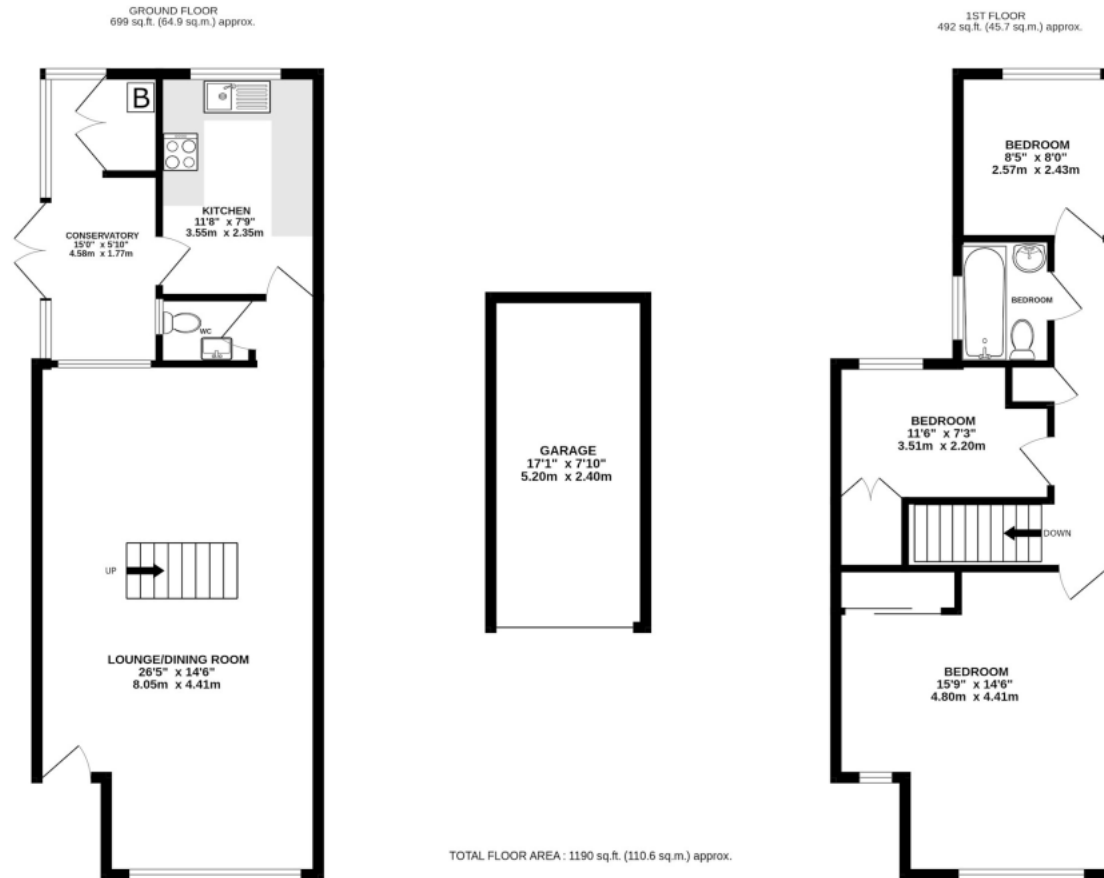
Ideally located, this property offers a countryside setting within easy reach of St. Albans, Harpenden, and Berkhamsted. Close to Flamstead, Redbourn, and Markyate for local amenities, with numerous picturesque country walks nearby.



In compliance with the UK's Anti Money Laundering (AML) regulations, we are required to confirm the identity of all prospective buyers at the point of an offer being accepted and use a third party, Identity Verification System to do so. There is a nominal charge of £48 (per person) including VAT for this service. For more information, please refer to the terms and conditions section of our website.







This floorplan is for illustrative purposes only. The measurement and position of each element is approximate and must be viewed as such.

**Important Information** These particulars do not constitute an offer or contract in whole or part. The statements contained herein are made without responsibility on the part of Ashtons or the vendors and they cannot be relied upon as representatives of fact. In respect of floor plans, these are for illustrative purposes only. The measurement and position of each element is approximate and must be viewed as such. Intending purchasers should therefore satisfy themselves by inspection or otherwise as to their correctness. The vendors do not make or give, and neither Ashtons nor any person in their employment has any authority to make or give, any representation or warranty whatsoever in relation to this property. We offer a wide range of services through third party providers including solicitors, surveyors, removal firms, mortgage providers and EPC suppliers. We receive additional payments for administering suppliers quoting software and making referrals. You are not under any obligations to use these services and it is your discretion whether you choose to deal with these parties or your own preferred supplier. You should be aware the average payment we received in 2024 equated to £29.76 per referral.