

 2 Bedrooms

 1 Bathroom

 1 Reception

 EPC Band D



Stunning 17th-century two-bedroom home, once part of the Princes Head Pub which operated until 1914.

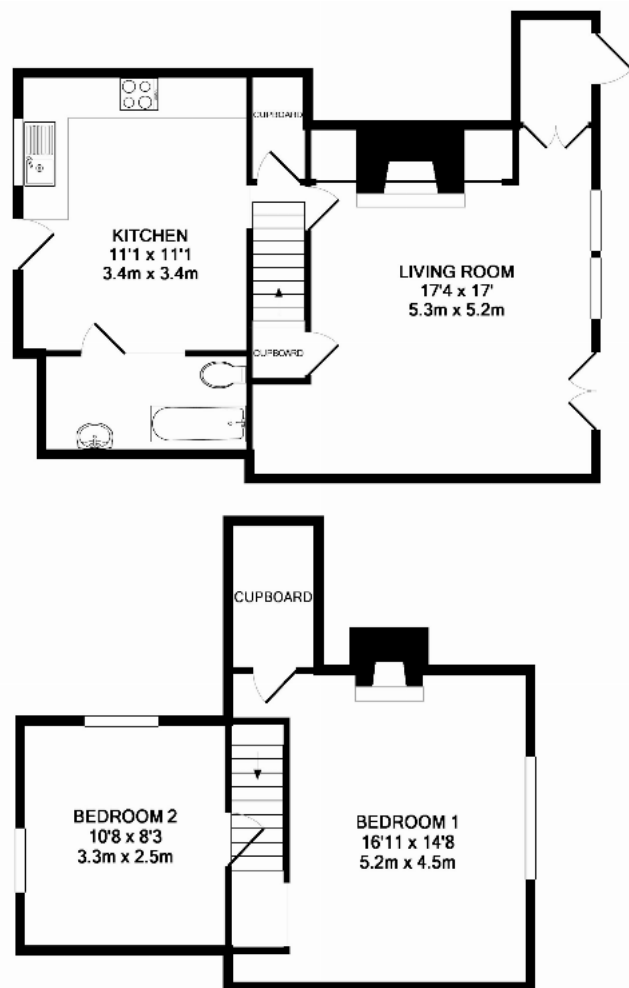
Description

Dating back to the 17th century, this stunning two-bedroom home is part of the former Princes Head Public House until 1914. The sitting room boasts an impressive Inglenook fireplace, with historic carvings visible in some timbers, and a porch leading to the front. The rear kitchen features an array of timber beams and a clay tiled floor that complements the hand-built kitchen, with access to the modern fitted bathroom and a door to the rear. Upstairs, a half landing leads to a second double bedroom, with the master bedroom at the top of the stairs. A truly unique home bursting with charm and character.









TOTAL APPROX. FLOOR AREA 901 SQ.FT. (83.7 SQ.M.)

Important Information These particulars do not constitute an offer or contract in whole or part. The statements contained herein are made without responsibility on the part of Ashtons or the vendors and they cannot be relied upon as representatives of fact. In respect of floor plans, these are for illustrative purposes only. The measurement and position of each element is approximate and must be viewed as such. Intending purchasers should therefore satisfy themselves by inspection or otherwise as to their correctness. The vendors do not make or give, and neither Ashtons nor any person in their employment has any authority to make or give, any representation or warranty whatsoever in relation to this property. We offer a wide range of services through third party providers including solicitors, surveyors, removal firms, mortgage providers and EPC suppliers. We receive additional payments for administering suppliers quoting software and making referrals. You are not under any obligations to use these services and it is your discretion whether you choose to deal with these parties or your own preferred supplier. You should be aware the average payment we received in 2024 equated to £29.76 per referral.