





-  3 Bedrooms
-  2 Bathrooms
-  2 Receptions
-  EPC Band E

Council Tax Band:
F £0.00 ()



Detached 3-bedroom family home with study and garage in a sought-after location overlooking Redbourn Common.

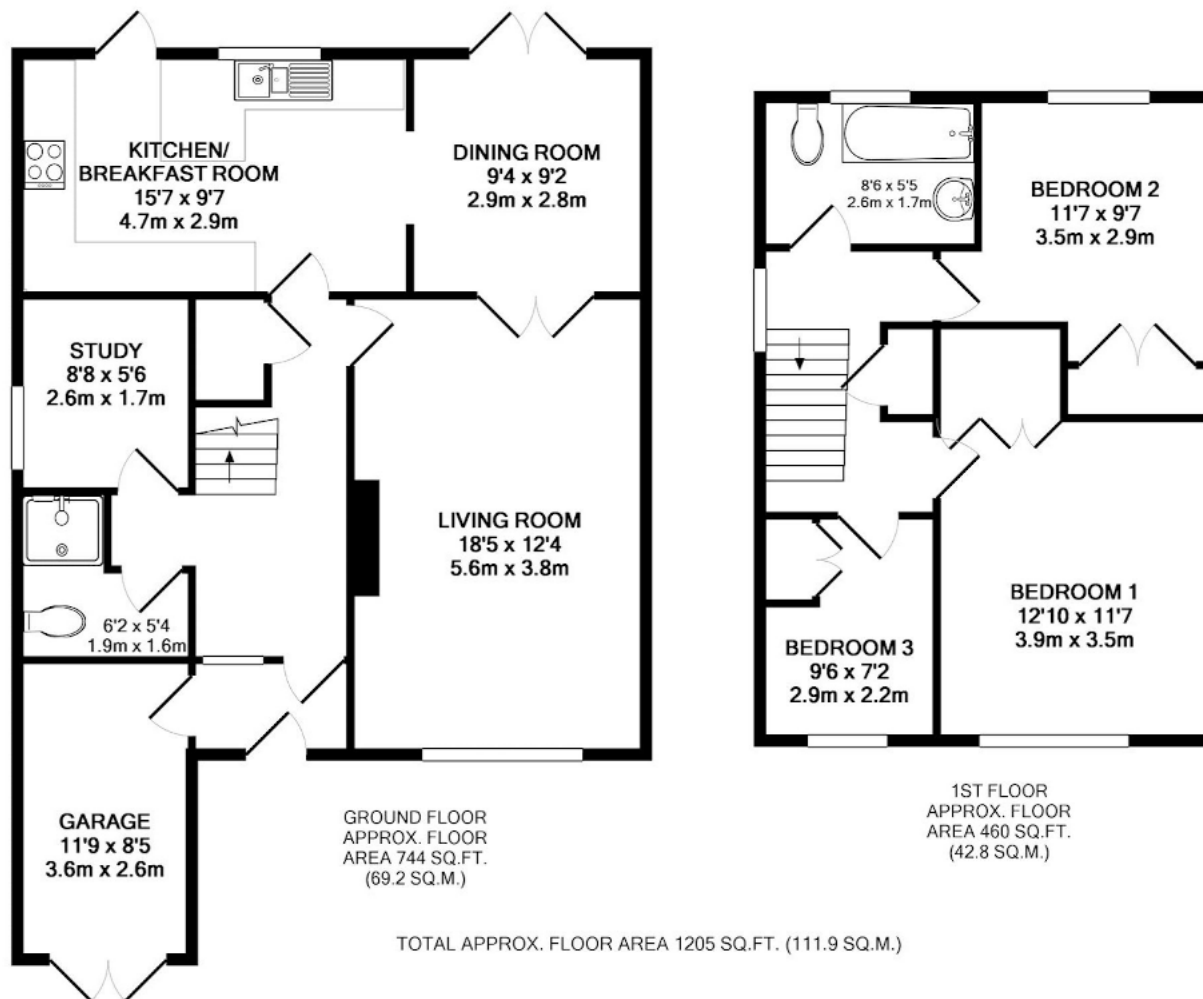
Description

This attractive detached home offers stunning views across Redbourn Common and is newly redecorated. The gravel driveway provides off-street parking for two cars and leads to a single garage. Inside, a spacious hallway leads to a generous living room with an open fireplace. Double doors open onto a bright dining room, leading to a well-maintained garden with a shed. The kitchen has integrated appliances, including a double oven. A study and shower room complete the ground floor. Upstairs, there are three well-proportioned bedrooms, two with built-in wardrobes. The family bathroom features a bath with an overhead shower.









This floor plan is for illustrative purposes only. The measurement and position of each element is approximate and must be viewed as such.

Important Information These particulars do not constitute an offer or contract in whole or part. The statements contained herein are made without responsibility on the part of Ashtons or the vendors and they cannot be relied upon as representatives of fact. In respect of floor plans, these are for illustrative purposes only. The measurement and position of each element is approximate and must be viewed as such. Intending purchasers should therefore satisfy themselves by inspection or otherwise as to their correctness. The vendors do not make or give, and neither Ashtons nor any person in their employment has any authority to make or give, any representation or warranty whatsoever in relation to this property. We offer a wide range of services through third party providers including solicitors, surveyors, removal firms, mortgage providers and EPC suppliers. We receive additional payments for administering suppliers quoting software and making referrals. You are not under any obligations to use these services and it is your discretion whether you choose to deal with these parties or your own preferred supplier. You should be aware the average payment we received in 2024 equated to £29.76 per referral.