



2 bedrooms



2 bathrooms



1 reception



Communal



Allocated space



EPC Band B

Leasehold

Council Tax Band:

D £2,359.13 (2025/26)

Local Authority:

St Albans District Council



Spacious 2 double bedroom 1st floor apartment, well presented in popular development overlooking St Marys Church.

Description

This excellent two-bedroom flat is on the first floor of a sought-after luxury apartment block with allocated parking for two cars. The property boasts an open-plan living area with two windows at the front offering wonderful views across to the church, and a breakfast bar separating the modern kitchen area. It features two double bedrooms, with the large master bedroom at the back, complete with fitted wardrobes and an en suite shower room. Bedroom two is off the hallway at the front. Additionally, there is a separate family bathroom, security entry phone, and built-in cupboards in the hallway. Council Tax Band D - £2,038.78. Lease 125 years from 2001. Ground rent £200 pa. Service charge £252 pcm.

Location

Close to Redbourn Common, village amenities, and larger towns Harpenden & St Albans with fast rail to London. The M1 and Luton Airport are also easily accessible.

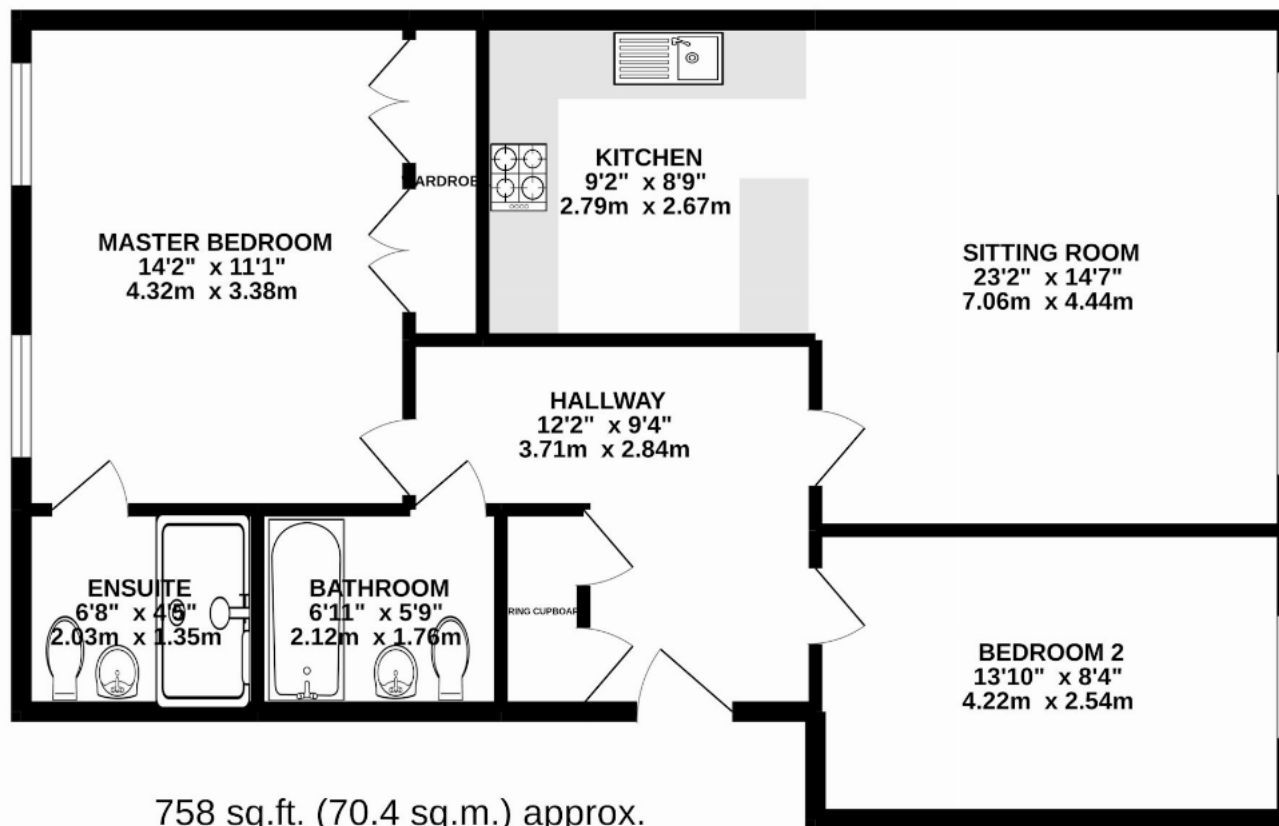
Buyers Information

In compliance with the UK's Anti Money Laundering (AML) regulations, we are required to confirm the identity of all prospective buyers at the point of an offer being accepted and use a third party, Identity Verification System to do so. There is a nominal charge of £48 (per person) including VAT for this service. For more information, please refer to the terms and conditions section of our website.









This floorplan is for illustrative purposes only. The measurement and position of each element is approximate and must be viewed as such.

Important Information These particulars do not constitute an offer or contract in whole or part. The statements contained herein are made without responsibility on the part of Ashtons or the vendors and they cannot be relied upon as representatives of fact. In respect of floor plans, these are for illustrative purposes only. The measurement and position of each element is approximate and must be viewed as such. Intending purchasers should therefore satisfy themselves by inspection or otherwise as to their correctness. The vendors do not make or give, and neither Ashtons nor any person in their employment has any authority to make or give, any representation or warranty whatsoever in relation to this property. We offer a wide range of services through third party providers including solicitors, surveyors, removal firms, mortgage providers and EPC suppliers. We receive additional payments for administering suppliers quoting software and making referrals. You are not under any obligations to use these services and it is your discretion whether you choose to deal with these parties or your own preferred supplier. You should be aware the average payment we received in 2024 equated to £29.76 per referral.