


 3 Bedrooms

 2 Bathrooms

 1 Reception

 Private Garden

 Driveway Parking

 EPC Band C

Council Tax Band:  
E £3,023.03 (2026/27)

Local Authority:  
St Albans Council



 **ashtons**  
for life's great moves

Silk Mill Road, Redbourn, St. Albans, AL3 7GE  
**Guide price of £650,000**

Excellent three-bedroom terraced home in a sought-after location near Redbourn Common.

### Description

This delightful village home is superbly located in a modern development, close to amenities. Recently renovated, it features a new kitchen, two bathrooms, and a guest cloakroom. The ground floor's spacious living room, stylish kitchen/diner with a range of units, and space for an American fridge/freezer, dishwasher, and washing machine, stand out. The new guest cloakroom completes this level. Upstairs, the principal bedroom fits a king-size bed, boasts an en-suite shower room, and built-in wardrobes. Two more bedrooms are serviced by a re-fitted family bathroom. Outside, the rear garden is fenced, mainly lawned, with a decked seating area and timber shed. There's driveway parking for two cars and unrestricted visitor parking nearby.

### Location

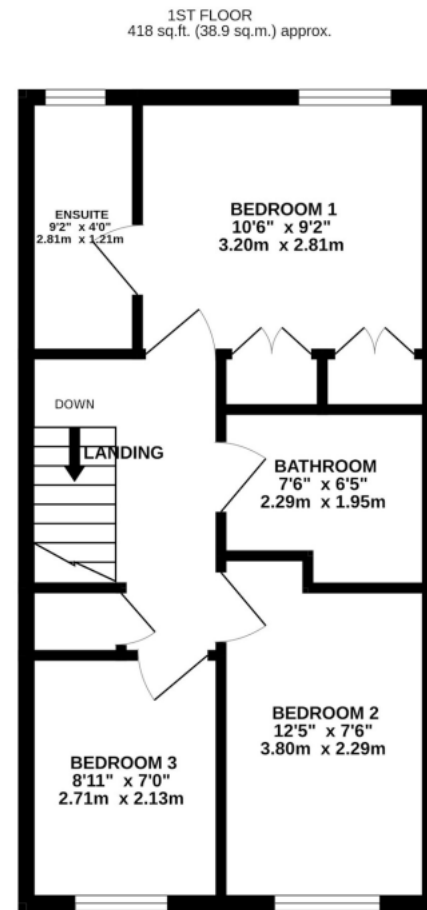
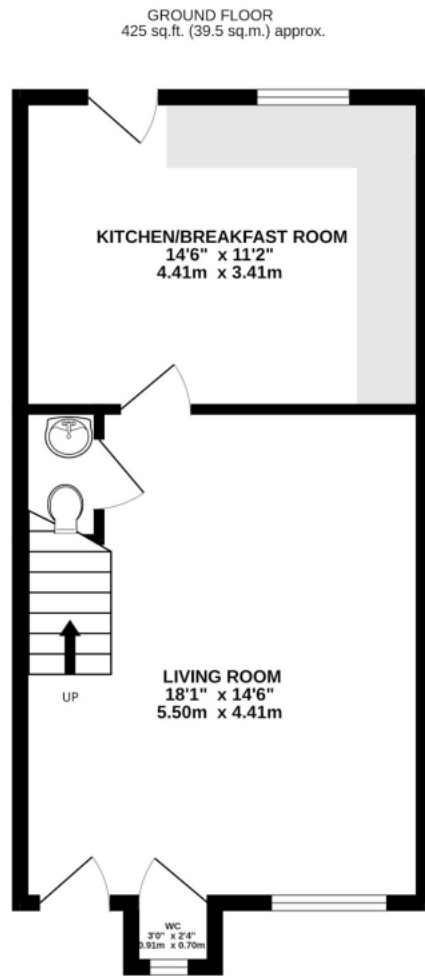
Silk Mill Road is a popular modern development situated on the edge of Redbourn, close to the Common. The village's extensive amenities are all within a short walk. Harpenden and St Albans are a short drive away and provide fast trains to London.



In compliance with the UK's Anti Money Laundering (AML) regulations, we are required to confirm the identity of all prospective buyers at the point of an offer being accepted and use a third party, Identity Verification System to do so. There is a nominal charge of £48 (per person) including VAT for this service. For more information, please refer to the terms and conditions section of our website.







TOTAL FLOOR AREA : 843 sq.ft. (78.3 sq.m.) approx.

This floorplan is for illustrative purposes only. The measurement and position of each element is approximate and must be viewed as such.

**Important Information** These particulars do not constitute an offer or contract in whole or part. The statements contained herein are made without responsibility on the part of Ashtons or the vendors and they cannot be relied upon as representatives of fact. In respect of floor plans, these are for illustrative purposes only. The measurement and position of each element is approximate and must be viewed as such. Intending purchasers should therefore satisfy themselves by inspection or otherwise as to their correctness. The vendors do not make or give, and neither Ashtons nor any person in their employment has any authority to make or give, any representation or warranty whatsoever in relation to this property. We offer a wide range of services through third party providers including solicitors, surveyors, removal firms, mortgage providers and EPC suppliers. We receive additional payments for administering suppliers quoting software and making referrals. You are not under any obligations to use these services and it is your discretion whether you choose to deal with these parties or your own preferred supplier. You should be aware the average payment we received in 2024 equated to £29.76 per referral.