 3 Bedrooms

 2 Bathrooms

 3 Receptions

 Large Garden

 Driveway

Freehold

Council Tax Band:  
E £3,023.03 (2025/26)

Local Authority:  
St Albans Council



 **ashtons**  
for life's great moves

Ver Road, Redbourn, St. Albans, AL3 7PE

**Guide price of £700,000**

Refurbished 3-bedroom home, near village centre and top school catchment. Attractive location.

### Description

This beautiful three-bedroom home has been refurbished to a high standard, perfectly positioned a short walk from village amenities and within the catchment area of excellent schools. The welcoming entrance hall leads to two reception rooms with feature fireplaces and a stunning kitchen/diner with bi-fold doors to the rear garden. The kitchen features stylish units, integrated appliances, and a central island. A separate utility and guest cloakroom complete this level. Upstairs are three bedrooms, two doubles, and a single, served by a contemporary family bathroom. There's potential to extend and create a fourth bedroom in the loft (STPP). Outside, the driveway offers ample off-street parking. The generous rear garden is predominantly lawned with a large patio seating area, perfect for entertaining.

### Location

Ver Road is situated in a highly convenient location close to amenities. Harpenden and St Albans are just a short drive away offering train links into London.

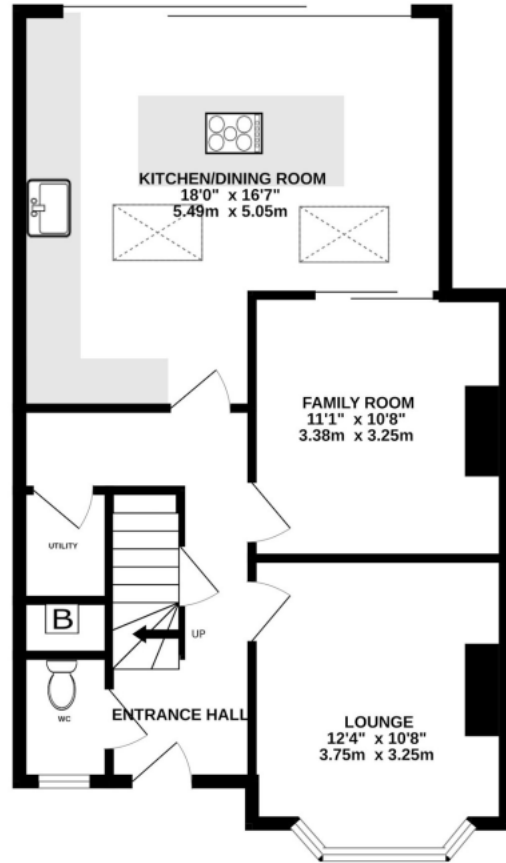


In compliance with the UK's Anti Money Laundering (AML) regulations, we are required to confirm the identity of all prospective buyers at the point of an offer being accepted and use a third party, Identity Verification System to do so. There is a nominal charge of £48 (per person) including VAT for this service. For more information, please refer to the terms and conditions section of our website.

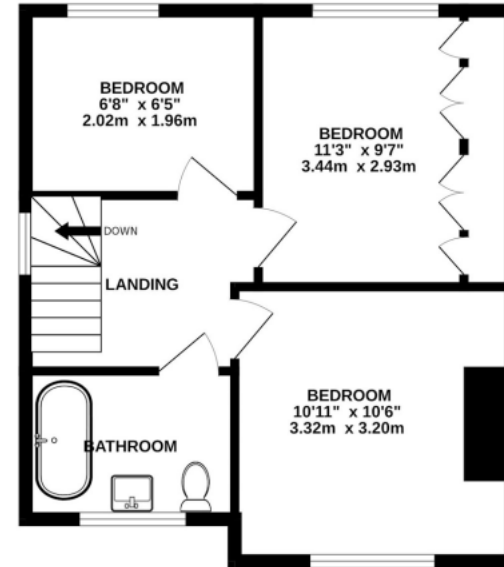




GROUND FLOOR  
670 sq.ft. (62.2 sq.m.) approx.



1ST FLOOR  
342 sq.ft. (31.8 sq.m.) approx.



TOTAL FLOOR AREA: 1011sq.ft. (93.9 sq.m.) approx.

Whilst every attempt has been made to ensure the accuracy of the floorplan contained here, measurements of doors, windows, rooms and any other items are approximate and no responsibility is taken for any error, omission or mis-statement. This plan is for illustrative purposes only and should be used as such by any prospective purchaser. The services, systems and appliances shown have not been tested and no guarantee as to their operability or efficiency can be given.

**Important Information** These particulars do not constitute an offer or contract in whole or part. The statements contained herein are made without responsibility on the part of Ashtons or the vendors and they cannot be relied upon as representatives of fact. In respect of floor plans, these are for illustrative purposes only. The measurement and position of each element is approximate and must be viewed as such. Intending purchasers should therefore satisfy themselves by inspection or otherwise as to their correctness. The vendors do not make or give, and neither Ashtons nor any person in their employment has any authority to make or give, any representation or warranty whatsoever in relation to this property. We offer a wide range of services through third party providers including solicitors, surveyors, removal firms, mortgage providers and EPC suppliers. We receive additional payments for administering suppliers quoting software and making referrals. You are not under any obligations to use these services and it is your discretion whether you choose to deal with these parties or your own preferred supplier. You should be aware the average payment we received in 2024 equated to £29.76 per referral.