

 3 Bedrooms

 2 Bathrooms

 2 Receptions

 Private Garden

 Garage

 EPC Band D



Freehold

Council Tax Band:
E £2,984.69 (2025/26)

Local Authority:
Dacorum Council

 **ashtons**
for life's great moves

Pietley Hill, Flamstead, St. Albans, AL3 8DX
Guide price of £739,950

Light, well-maintained character detached cottage with garage in a highly sought-after location offering far-reaching views.

Description

This delightful three-bedroom detached character home is situated on the edge of Flamstead village. Having been recently updated and redecorated, it is offered in very good condition with off-street parking and a garage, all enveloped in rural surrounds with lovely countryside views. The accommodation includes an entrance hall leading into a living room with a split-level dining room, currently used as a further sitting room, which opens into a very usable conservatory. The contemporary kitchen has been recently refitted along with the adjoining utility room. There is also a stylish ground floor bathroom. On the first floor, there are three good-sized bedrooms and a modern bathroom. Outside, there is off-street parking for at least two cars, a detached garage, and a terraced garden with lawned and paved areas, ideal for al fresco dining, barbeques, and enjoying the countryside.

Location

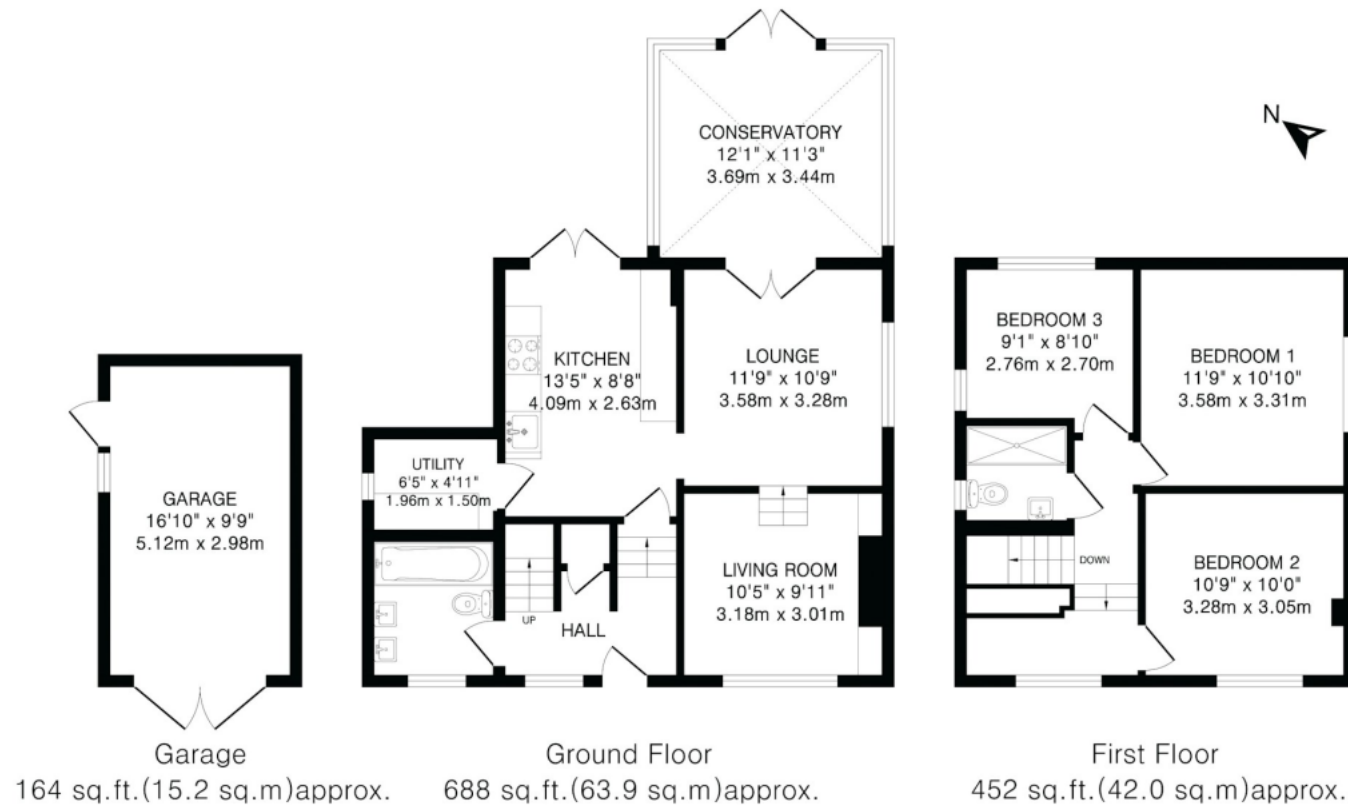
Pietley Hill leads into Trowley Bottom on the outskirts of Flamstead village. Surrounded by Hertfordshires rolling countryside. Harpenden and St Albans are a short drive away.



In compliance with the UK's Anti Money Laundering (AML) regulations, we are required to confirm the identity of all prospective buyers at the point of an offer being accepted and use a third party, Identity Verification System to do so. There is a nominal charge of £48 (per person) including VAT for this service. For more information, please refer to the terms and conditions section of our website.







TOTAL FLOOR AREA: 1304 sq.ft. (121.1 sq.m) approx.

This floorplan is for illustration purposes only. The measurements and position of each element are approximate and must be viewed as such.

Important Information These particulars do not constitute an offer or contract in whole or part. The statements contained herein are made without responsibility on the part of Ashtons or the vendors and they cannot be relied upon as representatives of fact. In respect of floor plans, these are for illustrative purposes only. The measurement and position of each element is approximate and must be viewed as such. Intending purchasers should therefore satisfy themselves by inspection or otherwise as to their correctness. The vendors do not make or give, and neither Ashtons nor any person in their employment has any authority to make or give, any representation or warranty whatsoever in relation to this property. We offer a wide range of services through third party providers including solicitors, surveyors, removal firms, mortgage providers and EPC suppliers. We receive additional payments for administering suppliers quoting software and making referrals. You are not under any obligations to use these services and it is your discretion whether you choose to deal with these parties or your own preferred supplier. You should be aware the average payment we received in 2024 equated to £29.76 per referral.