 4 Bedrooms

 1 Bathroom

 2 Receptions

 Large Garden

 On-Street Parking

Freehold

Council Tax Band:
E £3,023.03 (2026/27)

Local Authority:
St Albans Council

 **ashtons**
for life's great moves

Tassell Hall, Redbourn, St. Albans, AL3 7JE
Guide price of £700,000

Well presented 4-bedroom family home with a larger than average garden.

Description

This excellent family home offers spacious and light accommodation with a large garden. A welcoming entrance hall leads to generous living space, including a large living room with log burner opening into a rear conservatory. An attractive dining room leads into a stylish modern kitchen with contemporary units, integrated dishwasher, bins, cutlery drawer, pull-forward larder cabinets, and space for a Range-style cooker and American-style fridge/freezer. A large utility room off the kitchen offers plumbing for a washing machine, storage cupboards, a built-in freezer, and access to a WC with illuminated mirror. Upstairs, four good size bedrooms are served by a modern family bathroom featuring an illuminated mirror, LED lighting, and solid chrome carpet treads. Outside, gardens to both the front and rear enhance the property. The rear garden features a large patio area, various beds, a pond, and steps leading to a lawn bordered by mature trees and hedges, complemented by a timber shed for additional storage.

Location

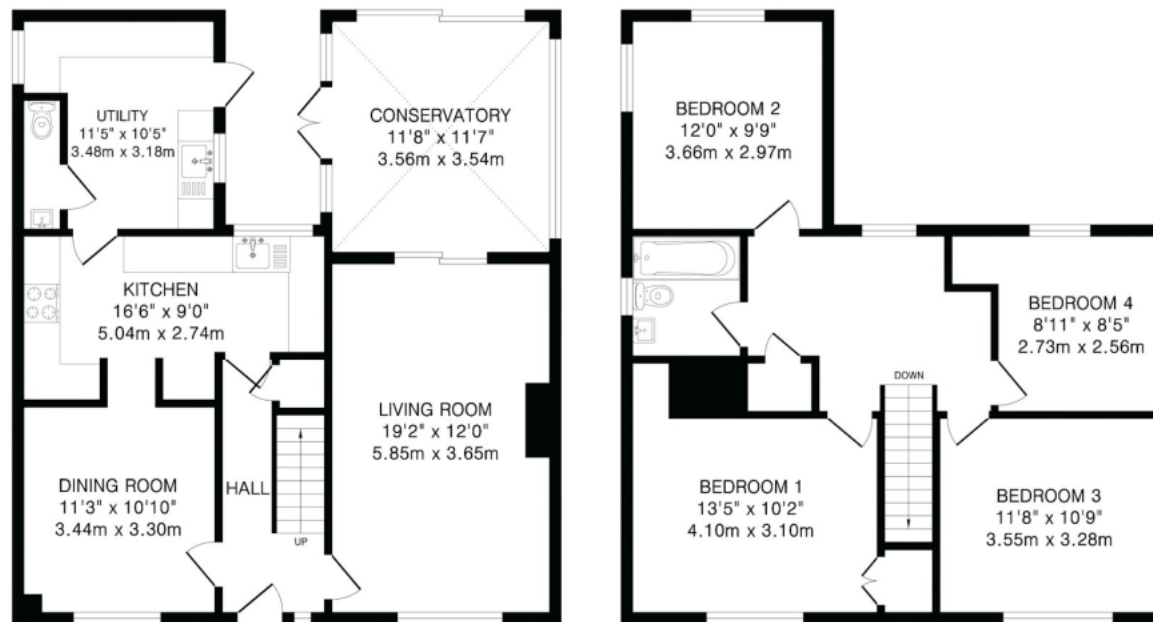
Located in the popular village of Redbourn the property is within walking distance of the village common and within easy reach of local amenities. More extensive shopping facilities and fast trains are a short drive away in Harpenden or St Albans.

In compliance with the UK's Anti Money Laundering (AML) regulations, we are required to confirm the identity of all prospective buyers at the point of an offer being accepted and use a third party, Identity Verification System to do so. There is a nominal charge of £48 (per person) including VAT for this service. For more information, please refer to the terms and conditions section of our website.









Ground Floor
864 sq.ft.(80.3 sq.m)approx.

First Floor
723 sq.ft.(67.1 sq.m)approx.

TOTAL FLOOR AREA: 1587 sq.ft.(147.4 sq.m)approx.
This floorplan is for illustration purposes only. The measurements and position of each element are approximate and must be viewed as such.

Important Information These particulars do not constitute an offer or contract in whole or part. The statements contained herein are made without responsibility on the part of Ashtons or the vendors and they cannot be relied upon as representatives of fact. In respect of floor plans, these are for illustrative purposes only. The measurement and position of each element is approximate and must be viewed as such. Intending purchasers should therefore satisfy themselves by inspection or otherwise as to their correctness. The vendors do not make or give, and neither Ashtons nor any person in their employment has any authority to make or give, any representation or warranty whatsoever in relation to this property. We offer a wide range of services through third party providers including solicitors, surveyors, removal firms, mortgage providers and EPC suppliers. We receive additional payments for administering suppliers quoting software and making referrals. You are not under any obligations to use these services and it is your discretion whether you choose to deal with these parties or your own preferred supplier. You should be aware the average payment we received in 2024 equated to £29.76 per referral.