


 3 Bedrooms

 1 Bathroom

 1 Reception

 Private Garden

 Garage

 EPC Band C

Freehold

Council Tax Band:
E £3,021.09 (2026/27)

Local Authority:
Dacorum Council



 **ashtons**
for life's great moves

High View, Markyate, St Albans, AL3 8NE
Guide price of £435,000

Charming 3-bedroom village home with garage, just a short stroll from amenities.

Description

This excellent link detached home offers ample living space, a private rear garden, and off-street parking, located just a short walk from the village High Street. The entrance hall leads to a large dual aspect living/dining room and a contemporary fitted kitchen overlooking the rear garden. The kitchen features stylish units with integrated double oven and hob, fridge/freezer, dishwasher, and washing machine. Upstairs are three bedrooms served by a modern family bathroom, complete with a three-piece suite and a shower with a glass screen over the bath. Outside, the rear garden is fully fenced and attractively landscaped with patio seating areas and steps leading to a raised lawn. The property is in good order throughout, and viewing is highly recommended.

Location

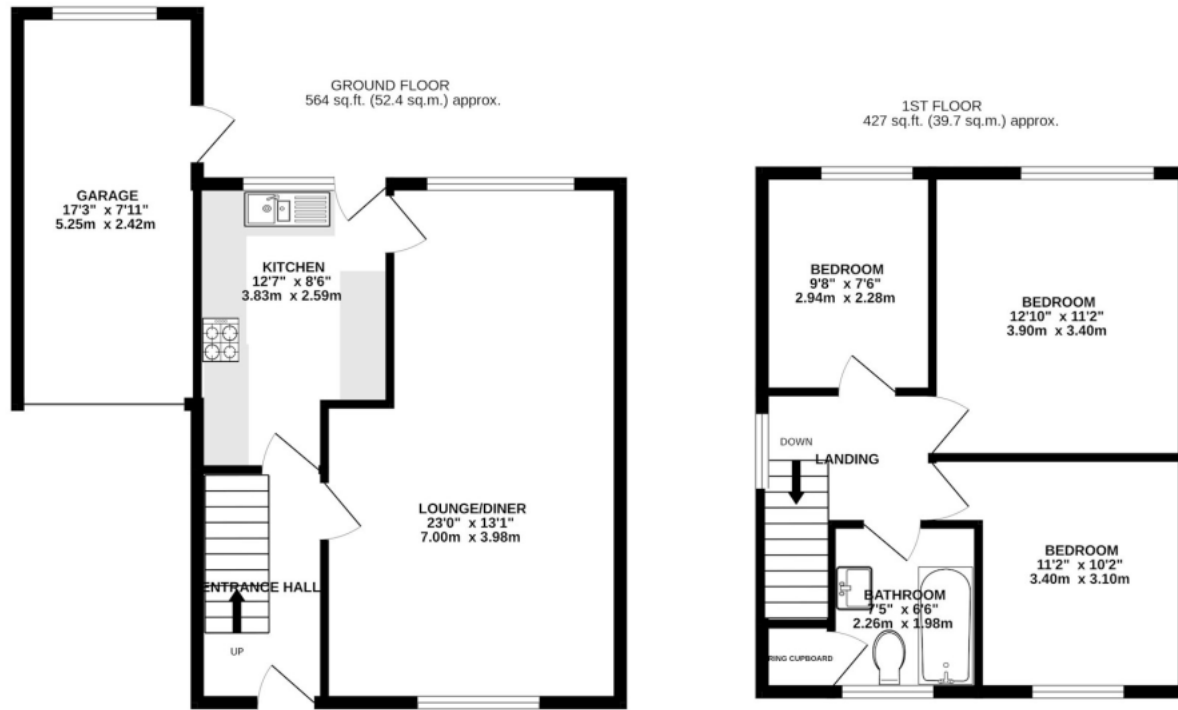
The property is in a quiet cul-de-sac near the village High Street with amenities. Markyate is popular, close to St Albans and Harpenden, offering wider amenities and fast rail links to London. Convenient for the M1 and London Luton Airport.



In compliance with the UK's Anti Money Laundering (AML) regulations, we are required to confirm the identity of all prospective buyers at the point of an offer being accepted and use a third party, Identity Verification System to do so. There is a nominal charge of £48 (per person) including VAT for this service. For more information, please refer to the terms and conditions section of our website.







TOTAL FLOOR AREA : 990 sq.ft. (92.0 sq.m.) approx.

This floorplan is for illustrative purposes only. The measurement and position of each element is approximate and must be viewed as such.

Important Information These particulars do not constitute an offer or contract in whole or part. The statements contained herein are made without responsibility on the part of Ashtons or the vendors and they cannot be relied upon as representatives of fact. In respect of floor plans, these are for illustrative purposes only. The measurement and position of each element is approximate and must be viewed as such. Intending purchasers should therefore satisfy themselves by inspection or otherwise as to their correctness. The vendors do not make or give, and neither Ashtons nor any person in their employment has any authority to make or give, any representation or warranty whatsoever in relation to this property. We offer a wide range of services through third party providers including solicitors, surveyors, removal firms, mortgage providers and EPC suppliers. We receive additional payments for administering suppliers quoting software and making referrals. You are not under any obligations to use these services and it is your discretion whether you choose to deal with these parties or your own preferred supplier. You should be aware the average payment we received in 2024 equated to £29.76 per referral.