






-  4 Bedrooms
-  2 Bathrooms
-  2 Receptions
-  Private Garden
-  Off-Street Parking

Freehold

Council Tax Band:
E £3,023.03 (2026/27)

Local Authority:
St Albans Council



Beautifully presented 4-bedroom family home with stunning open plan living, close to amenities and excellent school catchment.

Description

This superb detached home offers spacious and light accommodation, immaculately presented throughout. A welcoming hallway opens into a study/family room at the front and a stunning open-plan kitchen at the rear. The kitchen is fully fitted with contemporary units, integrated appliances, and a central island. It opens into a dining area with Velux windows and French doors leading to the rear garden. The dining area flows into an inviting living room, perfect for entertaining. A cloakroom with WC and hand basin is located off the hallway. Upstairs, there are four bedrooms. The principal bedroom is light and features a modern ensuite shower room. A luxurious family bathroom serves the remaining bedrooms. Bedroom four, currently used as a dressing room, offers extensive fitted wardrobes. Outside, a block-paved driveway provides ample off-street parking and leads to a small integral garage ideal for storage. The sunny rear garden is attractively landscaped with a patio, raised lawn, and large timber shed. Viewing is highly recommended.

Location

Crown Street is situated in a highly convenient location, close to Redbourn High Street. Harpenden and St Albans are just a short drive away and offer wider amenities, excellent secondary schools and fast rail links into London.

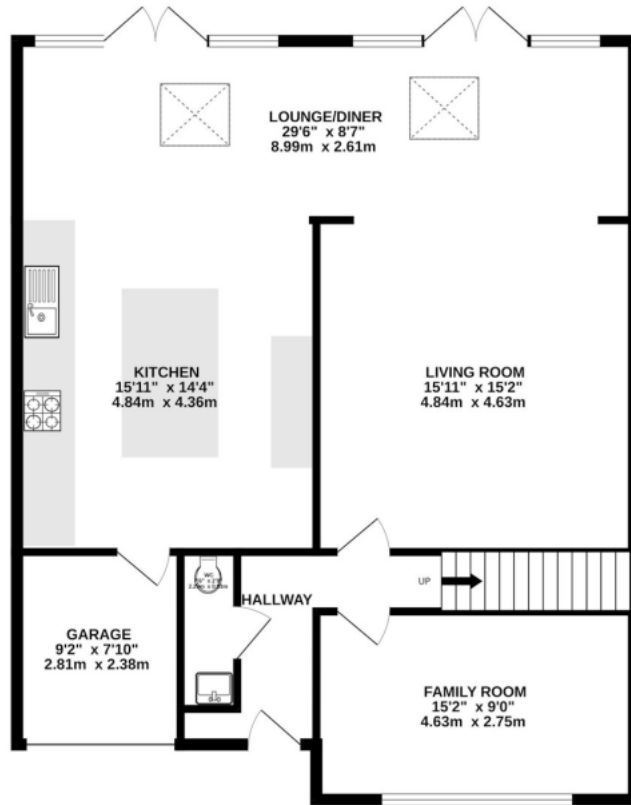


Buyers Information: - In compliance with the UK's Anti Money Laundering (AML) regulations, we are required to confirm the identity of all prospective buyers at the point of an offer being accepted and use a third party, Identity Verification System to do so. There is a nominal charge of £48 (per person) including VAT for this service. For more information, please refer to the terms and conditions section of our website.

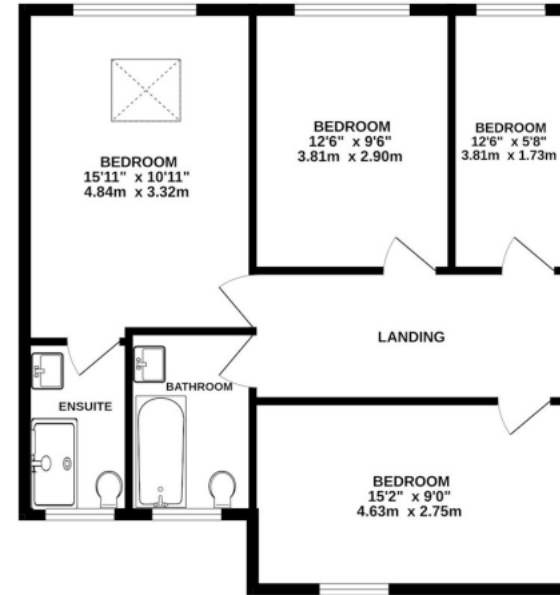




GROUND FLOOR
1033 sq.ft. (95.9 sq.m.) approx.



1ST FLOOR
684 sq.ft. (63.6 sq.m.) approx.



TOTAL FLOOR AREA : 1717 sq.ft. (159.5 sq.m.) approx.

This floorplan is for illustrative purposes only. The measurement and position of each element is approximate and must be viewed as such.

Important Information These particulars do not constitute an offer or contract in whole or part. The statements contained herein are made without responsibility on the part of Ashtons or the vendors and they cannot be relied upon as representatives of fact. In respect of floor plans, these are for illustrative purposes only. The measurement and position of each element is approximate and must be viewed as such. Intending purchasers should therefore satisfy themselves by inspection or otherwise as to their correctness. The vendors do not make or give, and neither Ashtons nor any person in their employment has any authority to make or give, any representation or warranty whatsoever in relation to this property. We offer a wide range of services through third party providers including solicitors, surveyors, removal firms, mortgage providers and EPC suppliers. We receive additional payments for administering suppliers quoting software and making referrals. You are not under any obligations to use these services and it is your discretion whether you choose to deal with these parties or your own preferred supplier. You should be aware the average payment we received in 2024 equated to £29.76 per referral.