



4 bedrooms



3 bathrooms



1 reception



Private Garden



Off-Street Parking



EPC Band D

Council Tax Band:  
E £2,860.11 (2025/26)

Local Authority:  
Dacorum Council





Unique detached 4-bedroom family home in Markyate. Quiet residential road, spacious accommodation over 3 levels, and off-street parking.

### Description

Casa Vasari is a modern family home set over three floors and presented to a high standard. The entrance hall leads to a spacious living/dining room overlooking the rear garden, with a cloakroom and a re-fitted kitchen featuring integral appliances and induction hob. A utility room is off the dining area. The first floor has three generous bedrooms; bedroom two has an en suite, and bedroom three features a Juliet balcony. A family bathroom serves bedrooms three and four. The second floor hosts the master bedroom with a stylish en suite. Externally, a block-paved driveway offers off-road parking. French doors from the living/dining room open to a raised patio, ideal for entertaining, with steps down to the lawned garden with mature hedging and fenced boundaries.

### Location

Situated on George Street, the property is close to the village High Street amenities. Markyate offers excellent road and rail links to London, with the M1 nearby and a Thameslink service from Harpenden to St. Pancras in under 30 minutes.



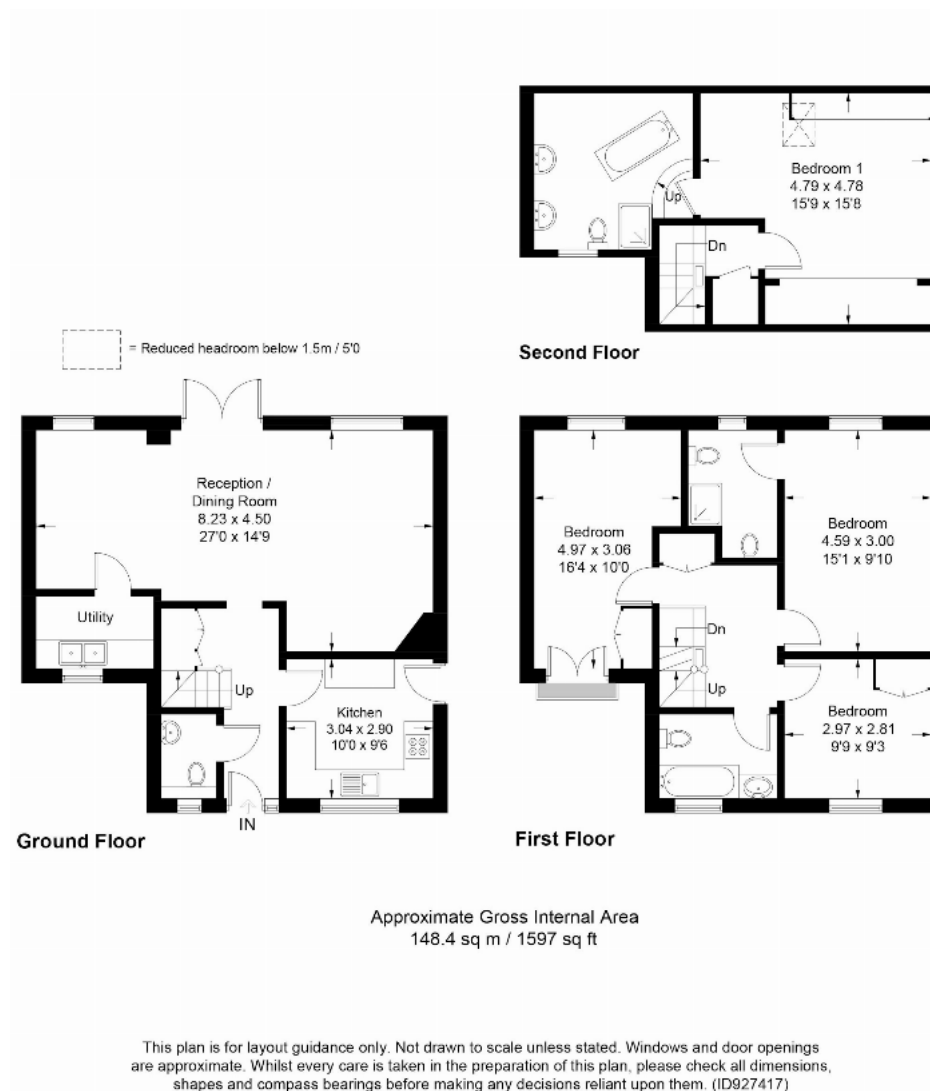
Buyers Information - In compliance with the UK's Anti Money Laundering (AML) regulations, we are required to confirm the identity of all prospective buyers at the point of an offer being accepted and use a third party, Identity Verification System to do so. There is a nominal charge of £48 (per person) including VAT for this service. For more information, please refer to the terms and conditions section of our website











**Important Information** These particulars do not constitute an offer or contract in whole or part. The statements contained herein are made without responsibility on the part of Ashtons or the vendors and they cannot be relied upon as representatives of fact. In respect of floor plans, these are for illustrative purposes only. The measurement and position of each element is approximate and must be viewed as such. Intending purchasers should therefore satisfy themselves by inspection or otherwise as to their correctness. The vendors do not make or give, and neither Ashtons nor any person in their employment has any authority to make or give, any representation or warranty whatsoever in relation to this property. We offer a wide range of services through third party providers including solicitors, surveyors, removal firms, mortgage providers and EPC suppliers. We receive additional payments for administering suppliers quoting software and making referrals. You are not under any obligations to use these services and it is your discretion whether you choose to deal with these parties or your own preferred supplier. You should be aware the average payment we received in 2024 equated to £29.76 per referral.