



5 bedrooms



3 bathrooms



3 receptions



Garden and Views



Double Garage



EPC Band D

Freehold

Council Tax Band:  
G £3,939.90 (2025/26)

Local Authority:  
Central Bedfordshire Council





Stunning converted barn with vaulted living space, large garden, and glorious countryside views.

### Description

The Long Barn presents a unique opportunity to acquire an exceptional contemporary home, meticulously crafted using natural materials. Originally converted in 2003, the barn's living room area was integrated into the main house by renowned architect Nicholas Tye, creating a stunning vaulted space with a main chimney built from local sandstone and a manor chest open fireplace. Bi-folding doors flood the area with light and offer breathtaking countryside views. Oak flooring, glass doors, and a mezzanine enhance the natural theme. The living room leads to a Hacker kitchen with granite tops, underfloor heating, and slate flooring, alongside a dining area, family room/gym, guest bedroom, and utility. Upstairs, the feeling of space continues with four double bedrooms. The master boasts an en-suite, while two further bedrooms share access to a dressing room and shower room. The property sits on a nearly two-thirds of an acre plot with gardens by Rosemary Coldstream, featuring multiple seating areas and a large driveway.

### Location

Isle of Wight Lane, near Kensworth, close to Whipsnade Zoo, offers access to M1, M25, and Luton Airport. Kensworth features a 12th century church, local school, shops, and pub. Top schools in Harpenden and St. Albans with London rail links nearby.



Buyers Information - In compliance with the UK's Anti Money Laundering (AML) regulations, we are required to confirm the identity of all prospective buyers at the point of an offer being accepted and use a third party, Identity Verification System to do so. There is a nominal charge of £48 (per person) including VAT for this service. For more information, please refer to the terms and conditions section of our website

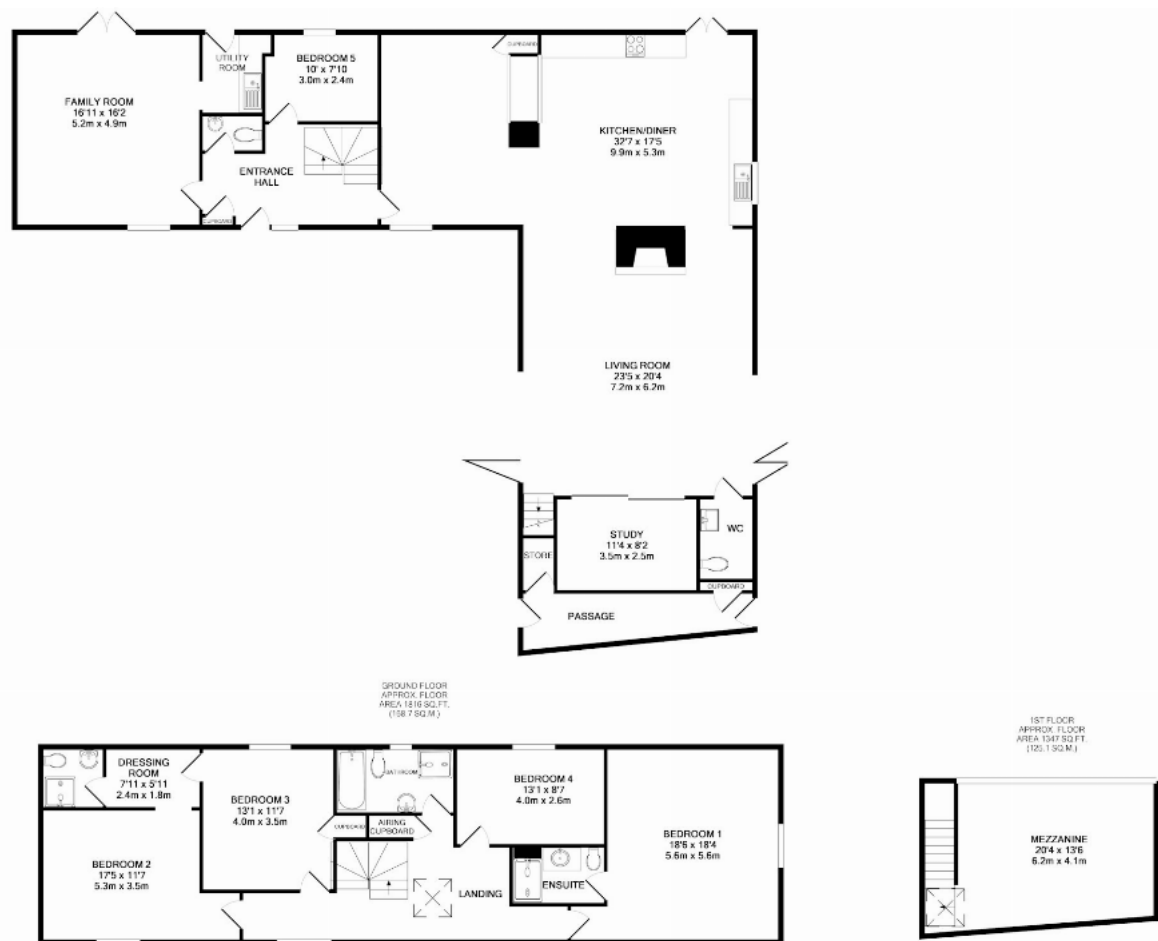












This floorplan is for illustrative purposes only. The measurement and position of each element is approximate and must be viewed as such.

**Important Information** These particulars do not constitute an offer or contract in whole or part. The statements contained herein are made without responsibility on the part of Ashtons or the vendors and they cannot be relied upon as representatives of fact. In respect of floor plans, these are for illustrative purposes only. The measurement and position of each element is approximate and must be viewed as such. Intending purchasers should therefore satisfy themselves by inspection or otherwise as to their correctness. The vendors do not make or give, and neither Ashtons nor any person in their employment has any authority to make or give, any representation or warranty whatsoever in relation to this property. We offer a wide range of services through third party providers including solicitors, surveyors, removal firms, mortgage providers and EPC suppliers. We receive additional payments for administering suppliers quoting software and making referrals. You are not under any obligations to use these services and it is your discretion whether you choose to deal with these parties or your own preferred supplier. You should be aware the average payment we received in 2024 equated to £29.76 per referral.