



4 bedrooms



3 bathrooms



4 receptions

Council Tax Band:  
G £3,742.91 (2024/25)

Local Authority:  
St Albans Council





Simply stunning landmark character home on Redbourn Common's edge in sought-after Church End.

### Description

This wonderful Grade II Listed home, dating back to the 1600s, was once the village post office and general store. Lovingly extended, it retains character features like exposed beams, original doors, and vaulted ceilings. The generous ground floor is beautifully presented with three reception rooms and a garden room. The main living room features an inglenook fireplace, log burning stove, and bay window overlooking the garden. The spacious kitchen, with a striking vaulted ceiling, is fitted with bespoke units, space for a Range-style cooker, and American fridge freezer, plus dining area and French doors to a patio. A shower room and utility room complete this level. Upstairs are four generous bedrooms. The principal bedroom has a luxurious ensuite with freestanding bath, separate shower, and a personal staircase to the main living room. A stylish bathroom serves the other bedrooms. Outside, the landscaped gardens are private with a large patio, lawn with mature beds, and a deck for all-day sun enjoyment. There's a large detached double garage with mezzanine, complete with power and light, plus a summerhouse and shed. Gates lead to the driveway with ample off-street parking for several vehicles.

### Location

Church End, a prime road in Redbourn near Redbourn Common, offers rich history and superb amenities in the High Street. The village boasts a well-regarded primary school, with Harpenden, St Albans, M1, and Luton Airport conveniently close.



Buyers Information: - In compliance with the UK's Anti Money Laundering (AML) regulations, we are required to confirm the identity of all prospective buyers at the point of an offer being accepted and use a third party, Identity Verification System to do so. There is a nominal charge of £48 (per person) including VAT for this service. For more information, please refer to the terms and conditions section of our website.

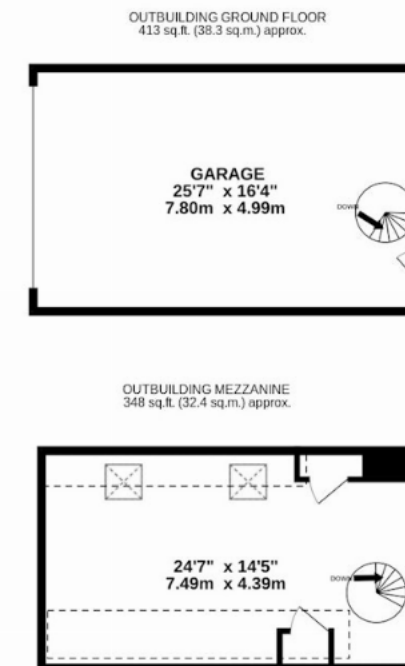
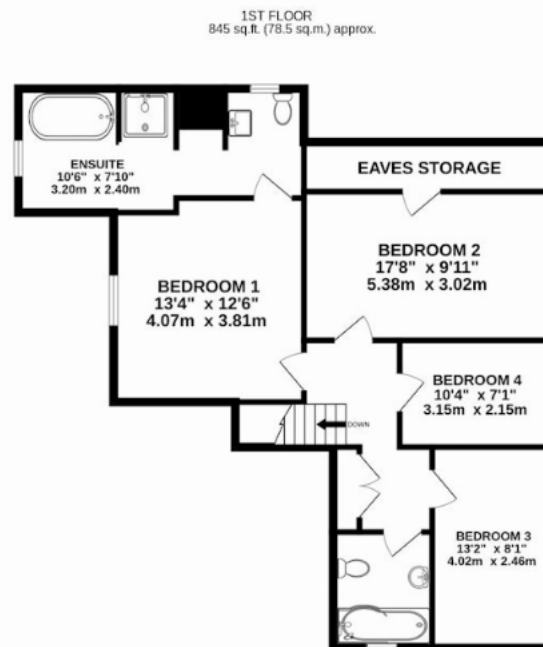
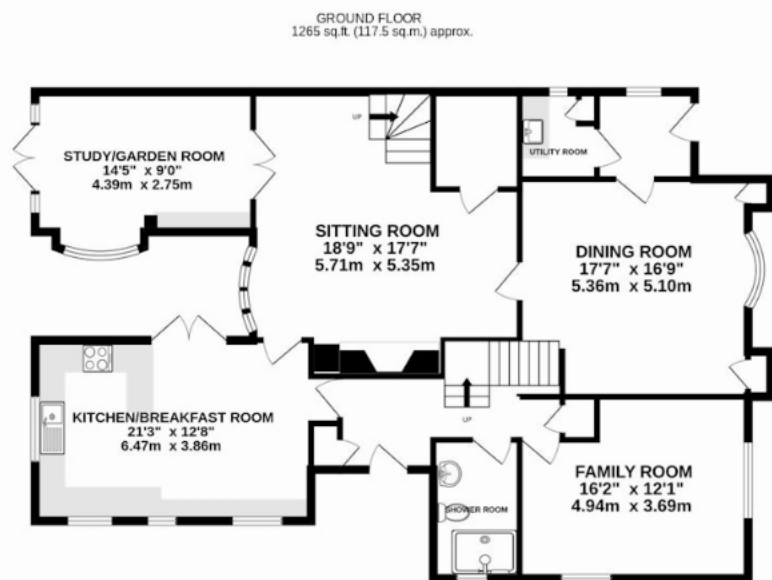












TOTAL FLOOR AREA : 2871 sq.ft. (266.7 sq.m.) approx.

This floorplan is for illustrative purposes only. The measurement and position of each element is approximate and must be viewed as such.

**Important Information** These particulars do not constitute an offer or contract in whole or part. The statements contained herein are made without responsibility on the part of Ashtons or the vendors and they cannot be relied upon as representatives of fact. In respect of floor plans, these are for illustrative purposes only. The measurement and position of each element is approximate and must be viewed as such. Intending purchasers should therefore satisfy themselves by inspection or otherwise as to their correctness. The vendors do not make or give, and neither Ashtons nor any person in their employment has any authority to make or give, any representation or warranty whatsoever in relation to this property. We offer a wide range of services through third party providers including solicitors, surveyors, removal firms, mortgage providers and EPC suppliers. We receive additional payments for administering suppliers quoting software and making referrals. You are not under any obligations to use these services and it is your discretion whether you choose to deal with these parties or your own preferred supplier. You should be aware the average payment we received in 2024 equated to £29.76 per referral.