

 3 Bedrooms

 2 Bathrooms

 1 Reception

 EPC Band C

Council Tax Band:
E £2,758.72 (2025/26)



Striking 3 bed 2 bath contemporary townhouse with a high-quality finish. Ideally located moments from city centre and mainline station.

Description

Occupying a favourable position at the end of a short, exclusive terrace, this stylish home spans three floors. Approached via a path through a private, low maintenance garden, the front door opens into a bright hallway with access to the guest WC. The spacious open-plan reception room, finished with Porcelanosa floor tiles, features full height glazed doors leading to a garden with a paved seating area. The high-quality kitchen boasts designer graphite grey units, Corian work surfaces, a breakfast bar with pendant lighting, and integrated Smeg appliances. A timber staircase with glass and stainless steel balustrade leads to the first floor, home to a spacious double bedroom with built-in storage, a single bedroom/study also with storage, a laundry cupboard, and a beautifully appointed family bathroom. The principal bedroom on the second floor offers rooftop views, abundant storage, and a fully tiled en-suite shower room. Additional benefits include an allocated off-street parking space and a communal garden.

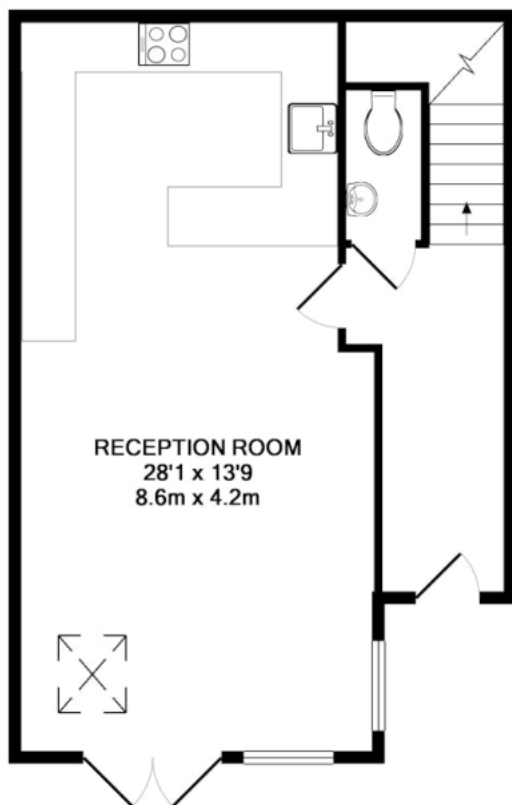
Location

Situated in a secluded mews, this property boasts a prime central location. It's a short walk to the mainline station and the plentiful amenities of St Albans city centre.

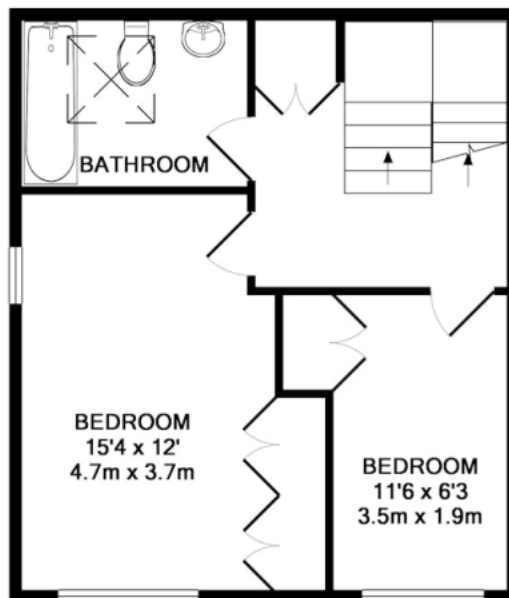




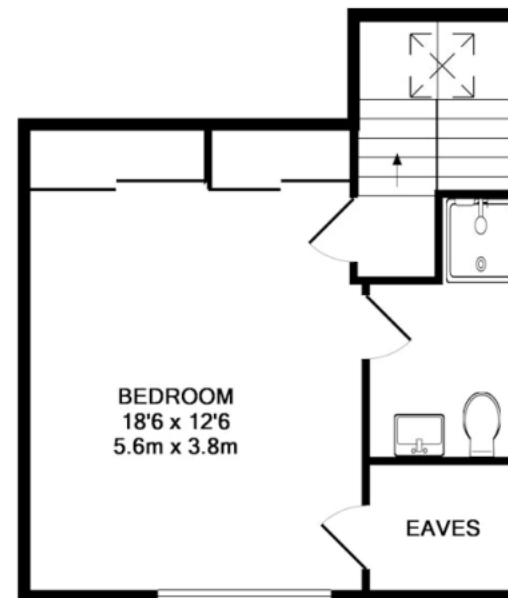




GROUND FLOOR



1ST FLOOR



2ND FLOOR

TOTAL APPROX. FLOOR AREA 1232 SQ.FT. (114.5 SQ.M.)

This floor plan is for illustrative purposes only. The measurement and position of each element is approximate and must be viewed as such

Important Information These particulars do not constitute an offer or contract in whole or part. The statements contained herein are made without responsibility on the part of Ashtons or the vendors and they cannot be relied upon as representatives of fact. In respect of floor plans, these are for illustrative purposes only. The measurement and position of each element is approximate and must be viewed as such. Intending purchasers should therefore satisfy themselves by inspection or otherwise as to their correctness. The vendors do not make or give, and neither Ashtons nor any person in their employment has any authority to make or give, any representation or warranty whatsoever in relation to this property. We offer a wide range of services through third party providers including solicitors, surveyors, removal firms, mortgage providers and EPC suppliers. We receive additional payments for administering suppliers quoting software and making referrals. You are not under any obligations to use these services and it is your discretion whether you choose to deal with these parties or your own preferred supplier. You should be aware the average payment we received in 2024 equated to £29.76 per referral.