



2 Bedrooms



2 Bathrooms



1 Reception



EPC Band E

Council Tax Band:  
D £0.00 ()

 **ashtons**  
for life's great moves

London Road, St. Albans, Hertfordshire, AL1 1PQ  
£2,000 PCM

Exceptionally bright top floor 2 double bedroom, 2 bathroom apartment, ideally located a short walk from town centre and mainline train station.

### Description

This stunning top floor apartment is bathed in natural light. The dual aspect, open-plan living room/kitchen boasts a vaulted ceiling, creating an airy atmosphere perfect for relaxation and entertaining with a lovely view of the cathedral. The high spec kitchen includes built-in appliances like a microwave, electric oven and hob, dishwasher, fridge, and freezer. A separate cupboard houses the washer/dryer. Both double bedrooms have fitted wardrobes, with the principal bedroom offering an en-suite bathroom, plus an additional shower room. Externally, find an allocated off-street parking space. The property is let furnished. Council Tax Band D: £2,155.11 for 2024/25. Deposit: £2,307.65. Holding Deposit: £461.53.

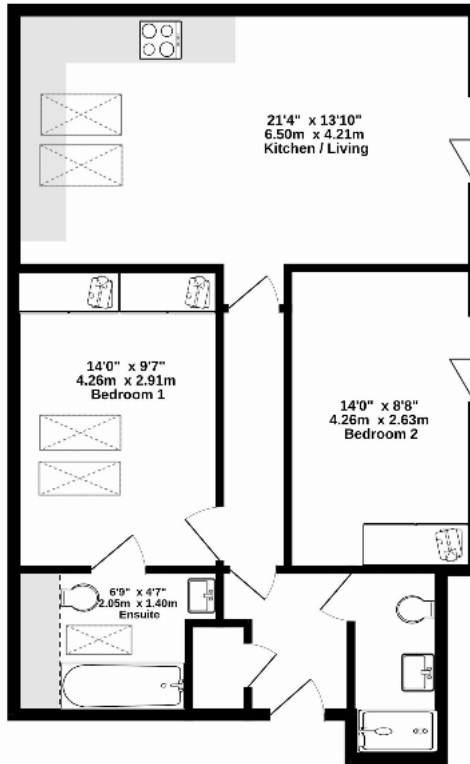
### Location

Located 0.5 miles from St Albans City Station with fast train links to London St Pancras, plus easy access to St Albans City Centre's array of shops, bars, restaurants, coffee shops, and leisure facilities.





GROUND FLOOR  
705 sq.ft. (65.5 sq.m.) approx.



TOTAL FLOOR AREA: 705 sq.ft. (65.5 sq.m.) approx.  
Made with: <https://www.52123.com>

**Important Information** These particulars do not constitute an offer or contract in whole or part. The statements contained herein are made without responsibility on the part of Ashtons or the vendors and they cannot be relied upon as representatives of fact. In respect of floor plans, these are for illustrative purposes only. The measurement and position of each element is approximate and must be viewed as such. Intending purchasers should therefore satisfy themselves by inspection or otherwise as to their correctness. The vendors do not make or give, and neither Ashtons nor any person in their employment has any authority to make or give, any representation or warranty whatsoever in relation to this property. We offer a wide range of services through third party providers including solicitors, surveyors, removal firms, mortgage providers and EPC suppliers. We receive additional payments for administering suppliers quoting software and making referrals. You are not under any obligations to use these services and it is your discretion whether you choose to deal with these parties or your own preferred supplier. You should be aware the average payment we received in 2024 equated to £29.76 per referral.