 2 Bedrooms

 1 Bathroom

 1 Reception

 EPC Band D

Council Tax Band:
D £2,257.13 (2025/26)



Two double bedroom duplex apartment close to mainline station. Delightful location.

Description

This lovely two double bedroom duplex apartment, with its contemporary and modern feel, is available on a short term basis. Entering via the first floor entrance, the accommodation features a large dual aspect eat-in kitchen/dining room, providing ample work surfaces and storage units, alongside a double bedroom/study. An internal staircase leads to the 2nd floor accommodation, which includes another double bedroom, a large living room with wooden floors, and a recently refitted shower room. The communal garden boasts a lawn, space for alfresco dining, mature trees, and the well-maintained development benefits from residents and visitors parking.

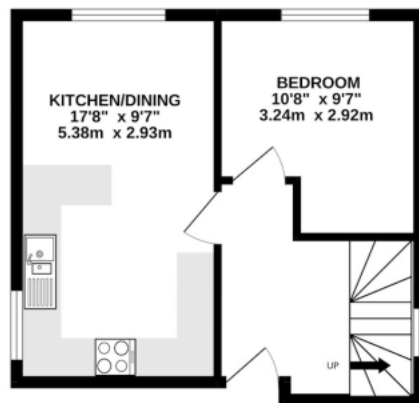
Location

Albanian Court is located within 0.5 miles of the mainline station and Clarence Park's open spaces. Local shops, cafes, and restaurants are easily accessible, as is the city centre.

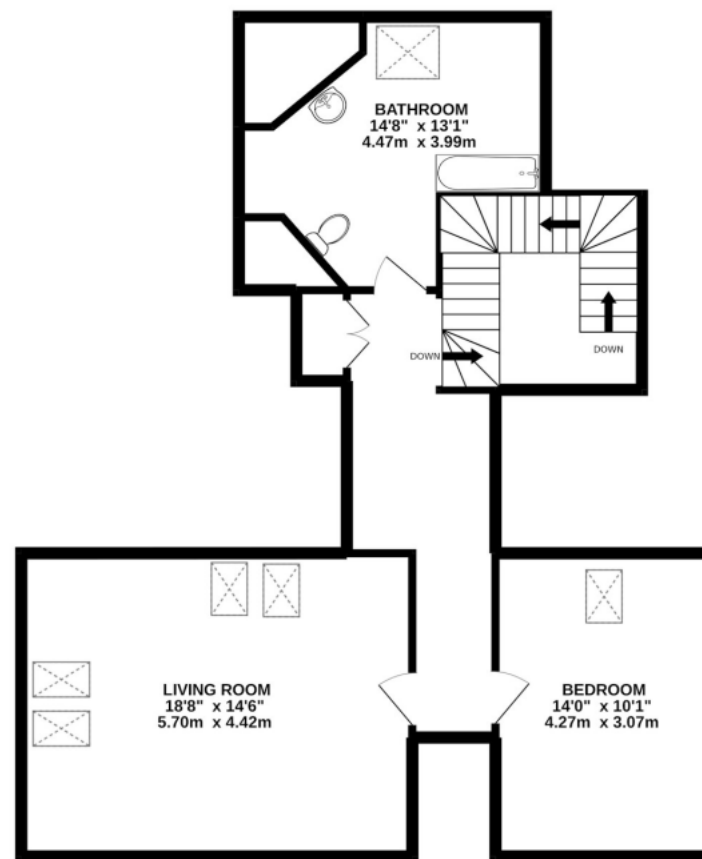








GROUND FLOOR
344 sq.ft. (32.0 sq.m.) approx.



1ST FLOOR
802 sq.ft. (74.6 sq.m.) approx.

TOTAL FLOOR AREA : 1147 sq.ft. (106.5 sq.m.) approx.

This floor plan is for illustrative purposes only. The measurement and position of each element is approximate and must be viewed as such

Important Information These particulars do not constitute an offer or contract in whole or part. The statements contained herein are made without responsibility on the part of Ashtons or the vendors and they cannot be relied upon as representatives of fact. In respect of floor plans, these are for illustrative purposes only. The measurement and position of each element is approximate and must be viewed as such. Intending purchasers should therefore satisfy themselves by inspection or otherwise as to their correctness. The vendors do not make or give, and neither Ashtons nor any person in their employment has any authority to make or give, any representation or warranty whatsoever in relation to this property. We offer a wide range of services through third party providers including solicitors, surveyors, removal firms, mortgage providers and EPC suppliers. We receive additional payments for administering suppliers quoting software and making referrals. You are not under any obligations to use these services and it is your discretion whether you choose to deal with these parties or your own preferred supplier. You should be aware the average payment we received in 2024 equated to £29.76 per referral.