





-  2 Bedrooms
-  1 Bathroom
-  2 Receptions
-  EPC Band D

Council Tax Band:  
D £2,257.13 (2025/26)





Beautifully presented 2-bedroom character cottage in Fleetville area, featuring a high-quality finish throughout.

### Description

This lovely two-bedroom character cottage combines the charm and features of the period with modern contemporary elements. Wood floors and decorative fireplaces adorn all principal rooms, complemented by neutrally decorated walls and soft furnishings. The thoughtfully designed kitchen is fitted to a high standard with modern appliances, wooden worktops, and a useful pull-out larder unit. The fully tiled four-piece white bathroom suite includes a separate shower cubicle. Additional features include two reception rooms, a private rear garden with a large deck for entertaining, an outbuilding with power and light, good storage options, double glazing, gas central heating, and a fully insulated and boarded loft space with light and ladder.

### Location

Hedley Road is in the sought-after 'Fleetville' area of St Albans, boasting cafes, restaurants, shops, and supermarkets nearby. The mainline station is under a mile away, with quick and easy access to the local motorway network.



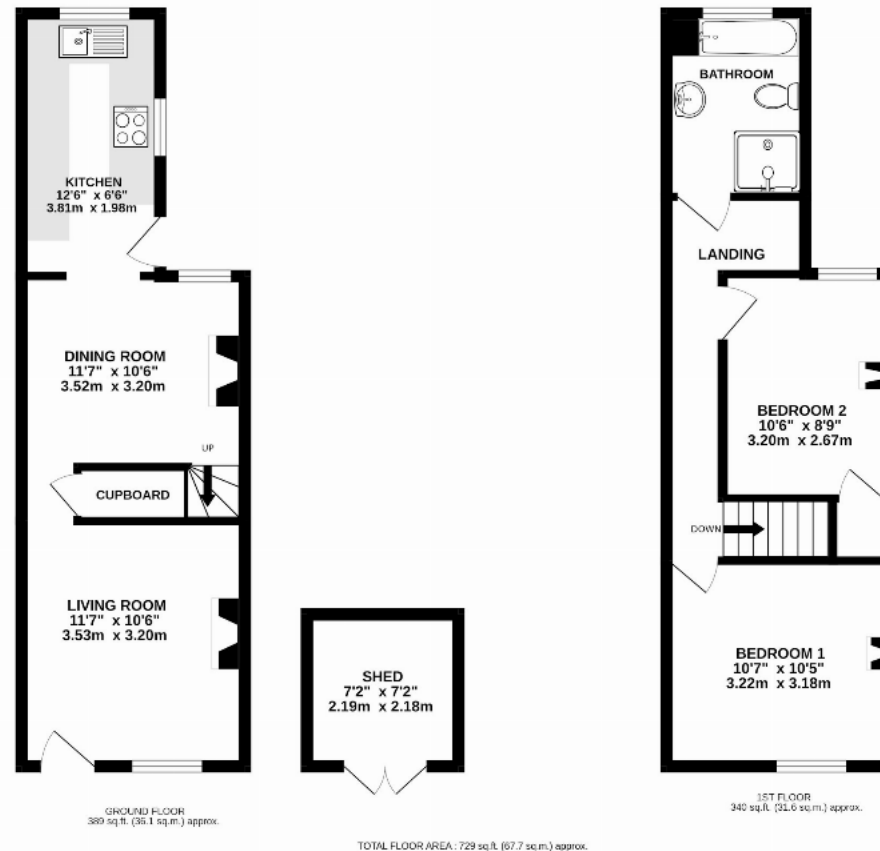












This floor plan is for illustrative purposes only. The measurement and position of each element is approximate and must be viewed as such

**Important Information** These particulars do not constitute an offer or contract in whole or part. The statements contained herein are made without responsibility on the part of Ashtons or the vendors and they cannot be relied upon as representatives of fact. In respect of floor plans, these are for illustrative purposes only. The measurement and position of each element is approximate and must be viewed as such. Intending purchasers should therefore satisfy themselves by inspection or otherwise as to their correctness. The vendors do not make or give, and neither Ashtons nor any person in their employment has any authority to make or give, any representation or warranty whatsoever in relation to this property. We offer a wide range of services through third party providers including solicitors, surveyors, removal firms, mortgage providers and EPC suppliers. We receive additional payments for administering suppliers quoting software and making referrals. You are not under any obligations to use these services and it is your discretion whether you choose to deal with these parties or your own preferred supplier. You should be aware the average payment we received in 2024 equated to £29.76 per referral.