

 2 Bedrooms

 1 Bathroom

 1 Reception

 EPC Band C

Council Tax Band:
D £2,368.36 (2026/2027)



 **ashtons**
for life's great moves

Beresford Road, St. Albans, AL1 5NP
£2,000 PCM

Attractive, extended, modernised two double bedroom home.

Description

This well-presented, two double bedroom semi-detached family home is located in the sought-after 'Fleetville' area of St Albans. The recently fitted kitchen, beautifully partitioned from the dining area, boasts plenty of cupboard and worktop space, as well as integrated appliances. Natural light floods in through the double doors that lead out to the garden. The ground floor also features a separate living room with charming bay windows. To the first floor, you will find two spacious double bedrooms, both serviced by a family bathroom with shower. Externally, the property offers a sizeable rear garden.

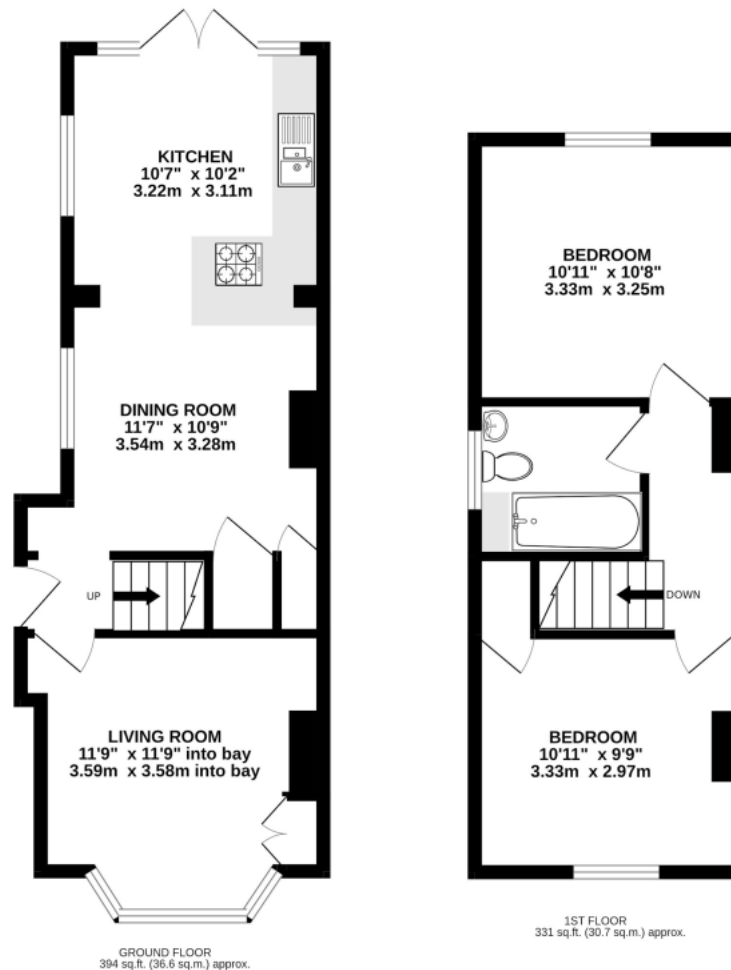
Location

Beresford Road is near Fleetville's excellent amenities and well-regarded schools. St Albans City Station is within walking distance, offering fast rail services to central London.









TOTAL FLOOR AREA: 725 sq.ft. (67.3 sq.m.) approx.

This floor plan is for illustrative purposes only. The measurement and position of each element is approximate and must be viewed as such

Important Information These particulars do not constitute an offer or contract in whole or part. The statements contained herein are made without responsibility on the part of Ashtons or the vendors and they cannot be relied upon as representatives of fact. In respect of floor plans, these are for illustrative purposes only. The measurement and position of each element is approximate and must be viewed as such. Intending purchasers should therefore satisfy themselves by inspection or otherwise as to their correctness. The vendors do not make or give, and neither Ashtons nor any person in their employment has any authority to make or give, any representation or warranty whatsoever in relation to this property. We offer a wide range of services through third party providers including solicitors, surveyors, removal firms, mortgage providers and EPC suppliers. We receive additional payments for administering suppliers quoting software and making referrals. You are not under any obligations to use these services and it is your discretion whether you choose to deal with these parties or your own preferred supplier. You should be aware the average payment we received in 2024 equated to £29.76 per referral.