



 1 Bedroom

 1 Bathroom

 1 Reception

 EPC Band D

Council Tax Band:
B £1,755.54 (2025/26)


for life's great moves

Holywell Hill, St. Albans, Hertfordshire, AL1 1BZ
£1,400 PCM

Beautifully presented top floor apartment in St Albans City Centre, featuring contemporary, high-quality finish throughout. Fully furnished.

Description

A beautifully presented, high specification one double bedroom top floor apartment, with contemporary furnishings and centrally located in the heart of St Albans City Centre. The apartment features an open-plan living room with large Velux windows that flood the living area with natural light. The open plan, high-quality fully fitted kitchen is equipped with integrated appliances to include; dishwasher, fridge/freezer, washer/dryer, electric oven, gas hob and microwave. The double bedroom is an excellent size with a bay window, and has an en suite shower room. There is a further guest WC and large storage cupboard in the entrance hall. Council tax band B: £1,755.54 for 2025/26. Holding deposit: £323.08. Deposit: £1,615.38.

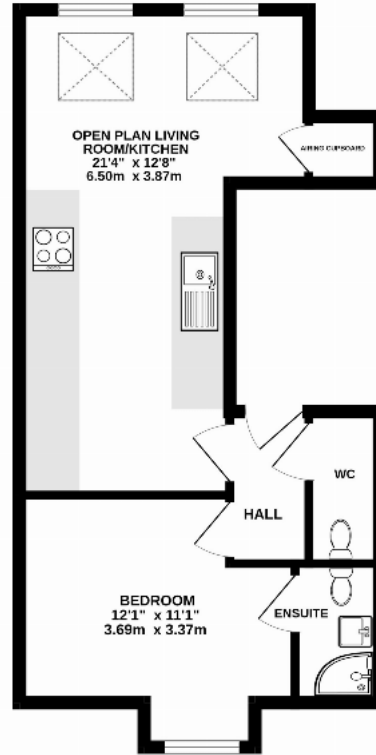
Location

Situated at the top of Holywell Hill in the City Centre, enjoy boutiques, bars, restaurants, and cafes at your doorstep. Commuting is easy with the mainline station approximately 0.7 miles away.









TOTAL FLOOR AREA : 413 sq.ft. (38.4 sq.m.) approx.

This floor plan is for illustrative purposes only; the measurement and position of each element is approximate and must be viewed as such.

Important Information These particulars do not constitute an offer or contract in whole or part. The statements contained herein are made without responsibility on the part of Ashtons or the vendors and they cannot be relied upon as representatives of fact. In respect of floor plans, these are for illustrative purposes only. The measurement and position of each element is approximate and must be viewed as such. Intending purchasers should therefore satisfy themselves by inspection or otherwise as to their correctness. The vendors do not make or give, and neither Ashtons nor any person in their employment has any authority to make or give, any representation or warranty whatsoever in relation to this property. We offer a wide range of services through third party providers including solicitors, surveyors, removal firms, mortgage providers and EPC suppliers. We receive additional payments for administering suppliers quoting software and making referrals. You are not under any obligations to use these services and it is your discretion whether you choose to deal with these parties or your own preferred supplier. You should be aware the average payment we received in 2024 equated to £29.76 per referral.