



4 Bedrooms



2 Bathrooms



3 Receptions



EPC Band D

Council Tax Band:
F £3,420.96 (2025/26)

 **ashtons**
for life's great moves

Foxcroft, St. Albans, AL1 5SW
£3,500 PCM

Charming 3/4 bed detached family home, garage, off-street parking, secluded sunny rear garden.

Description

This wonderful property is set back from the road with a driveway and garage providing parking for several cars. The large welcoming entrance hall offers ample closet storage and a downstairs cloakroom with WC. The hallway leads to the main living room, flooded with natural light through the large South West facing window overlooking the garden. The adjacent dining room is bright with French doors to the garden. The spacious kitchen, with an array of wall and base units, includes integrated appliances such as a dishwasher, oven, and gas hob. Additional storage is available in the utility area, which also houses the washing machine and tumble dryer. A further good-sized reception room can serve as a fourth double bedroom, alongside an ideal study/home office space. The spacious first floor features a principal bedroom with fitted wardrobes and an en-suite shower room, two additional double bedrooms, and a family bathroom with separate WC. The South West facing garden enjoys a sunny patio, lawn, mature shrub borders, and a garden room.

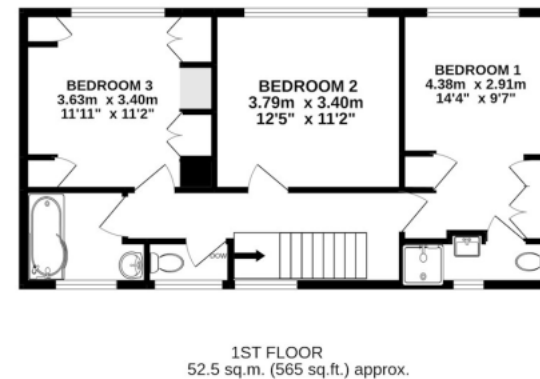
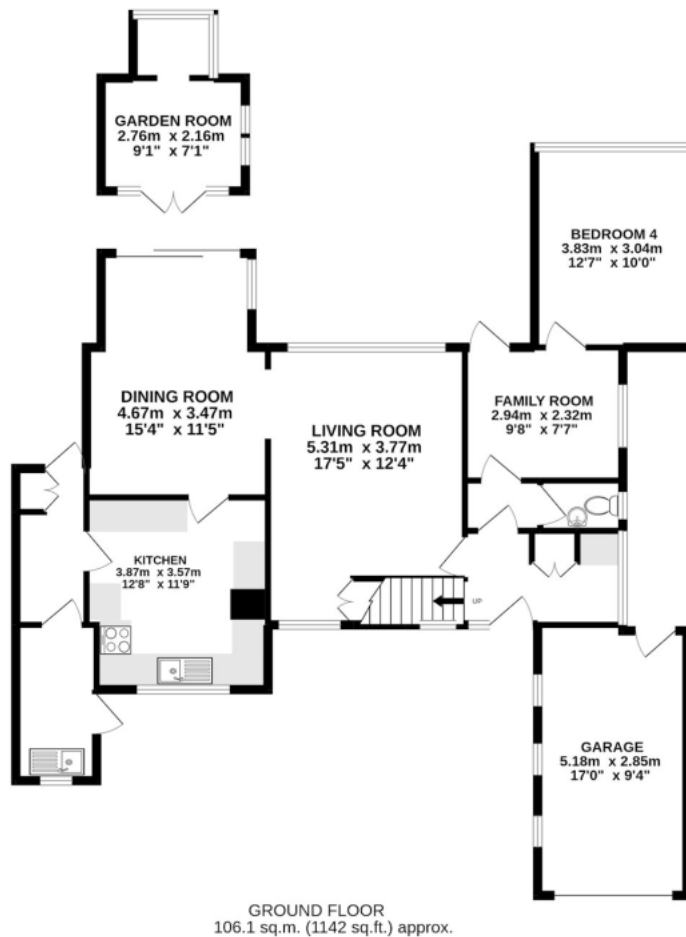
Location

Foxcroft is on the Eastern edge of St Albans, near schools and parkland. Popular with families, it's close to shops, Cunningham Hill schools, The Samuel Ryder Academy, and within reach of the mainline station and City centre.









TOTAL FLOOR AREA : 158.6 sq.m. (1707 sq.ft.) approx.

This floor plan is for illustrative purposes only. The measurement and position of each element is approximate and must be viewed as such

Important Information These particulars do not constitute an offer or contract in whole or part. The statements contained herein are made without responsibility on the part of Ashtons or the vendors and they cannot be relied upon as representatives of fact. In respect of floor plans, these are for illustrative purposes only. The measurement and position of each element is approximate and must be viewed as such. Intending purchasers should therefore satisfy themselves by inspection or otherwise as to their correctness. The vendors do not make or give, and neither Ashtons nor any person in their employment has any authority to make or give, any representation or warranty whatsoever in relation to this property. We offer a wide range of services through third party providers including solicitors, surveyors, removal firms, mortgage providers and EPC suppliers. We receive additional payments for administering suppliers quoting software and making referrals. You are not under any obligations to use these services and it is your discretion whether you choose to deal with these parties or your own preferred supplier. You should be aware the average payment we received in 2024 equated to £29.76 per referral.