



1 Bedroom



1 Bathroom



1 Reception



EPC Band C

Council Tax Band:
C £2,006.35 (2025/26)

A recently redecorated one double bedroom apartment with off-street parking, located on the first floor of this well maintained apartment building, in the Jersey Farm area of St Albans.

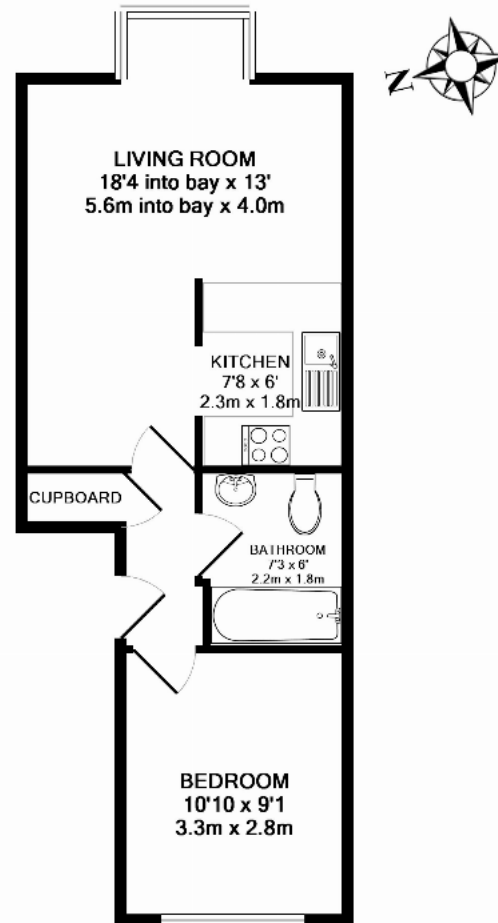
Description

Situated in a quiet cul-de-sac, this one-bedroom first (top) floor apartment is well-presented throughout, ideal for a professional couple or single person. The communal hall has staircase access to the first floor and entrance hall. The bright living area, with a bay window to the rear, offers space for sofas and a dining table, and is open-plan to the modern kitchen equipped with white high-gloss units, wood-style worktops, and integrated appliances. The hall leads to a spacious double bedroom with a fitted wardrobe, front aspect window, and a modern bathroom with a shower over the bath. Outside, find communal gardens and an allocated parking space. Council tax band C: £2,006.35 for 2025/26, holding deposit: £288.46, deposit: £1,442.30.









TOTAL APPROX. FLOOR AREA 392 SQ.FT. (36.4 SQ.M.)

This floor plan is for illustrative purposes only. The measurement and position of each element is approximate and must be viewed as such

Important Information These particulars do not constitute an offer or contract in whole or part. The statements contained herein are made without responsibility on the part of Ashtons or the vendors and they cannot be relied upon as representatives of fact. In respect of floor plans, these are for illustrative purposes only. The measurement and position of each element is approximate and must be viewed as such. Intending purchasers should therefore satisfy themselves by inspection or otherwise as to their correctness. The vendors do not make or give, and neither Ashtons nor any person in their employment has any authority to make or give, any representation or warranty whatsoever in relation to this property. We offer a wide range of services through third party providers including solicitors, surveyors, removal firms, mortgage providers and EPC suppliers. We receive additional payments for administering suppliers quoting software and making referrals. You are not under any obligations to use these services and it is your discretion whether you choose to deal with these parties or your own preferred supplier. You should be aware the average payment we received in 2024 equated to £29.76 per referral.