





-  2 Bedrooms
-  2 Bathrooms
-  1 Reception
-  EPC Band C

Council Tax Band:
C £0.00 ()



Striking first floor apartment with two double bedrooms.
Contemporary living in a sought-after, convenient City Centre location.

Description

This exquisite first-floor apartment in a charming period building blends elegance and charm with modern comforts. The centrepiece is the large kitchen/breakfast room with an exposed brick chimney, range style cooker, and Quartz worktops, featuring sleek contemporary units. Adjacent is a bright, spacious living room with a bay window overlooking Verulam Road. There are two sizeable double bedrooms; the principal bedroom includes an en-suite bathroom and walk-in wardrobe. The second bedroom is serviced by a large family bathroom with a separate shower cubicle and built-in wardrobe space. Situated a stone's throw from the City centre, this stunning apartment offers luxurious living with period charm. Council Tax Band C: £1,915.66 for 2024/25. Holding deposit: £461.53. Deposit: £2,307.65.

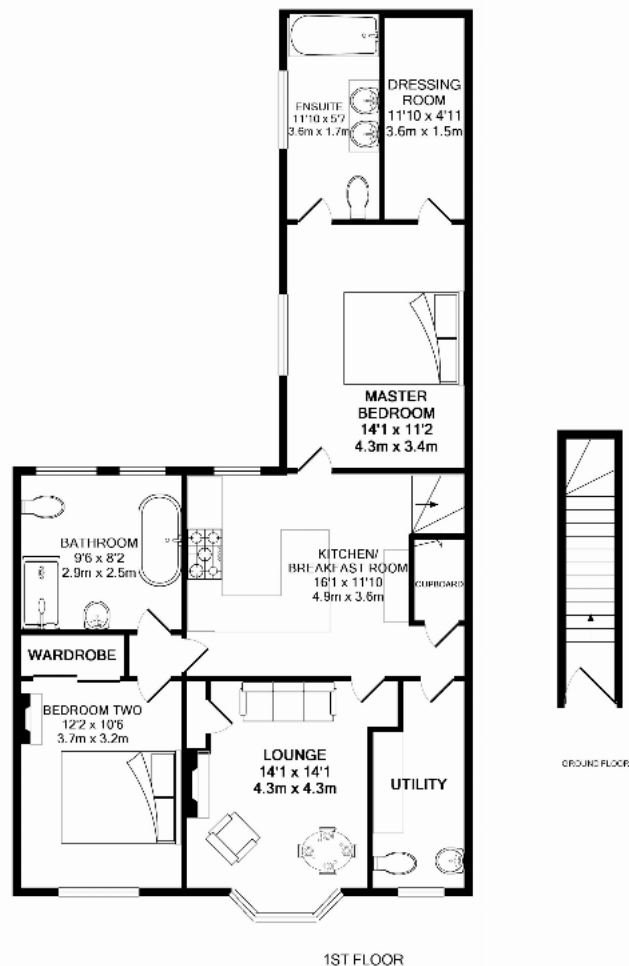
Location

Verulam Road is superbly positioned just a short walk from St Albans City Centre's cafes, eateries, bars, and boutique shops, as well as the mainline station with regular trains to London St Pancras and the City.









TOTAL APPROX. FLOOR AREA 1080 SQ.FT. (98.5 SQ.M.)
Made with Metropix 2019

Important Information These particulars do not constitute an offer or contract in whole or part. The statements contained herein are made without responsibility on the part of Ashtons or the vendors and they cannot be relied upon as representatives of fact. In respect of floor plans, these are for illustrative purposes only. The measurement and position of each element is approximate and must be viewed as such. Intending purchasers should therefore satisfy themselves by inspection or otherwise as to their correctness. The vendors do not make or give, and neither Ashtons nor any person in their employment has any authority to make or give, any representation or warranty whatsoever in relation to this property. We offer a wide range of services through third party providers including solicitors, surveyors, removal firms, mortgage providers and EPC suppliers. We receive additional payments for administering suppliers quoting software and making referrals. You are not under any obligations to use these services and it is your discretion whether you choose to deal with these parties or your own preferred supplier. You should be aware the average payment we received in 2024 equated to £29.76 per referral.