

 4 Bedrooms

 2 Bathrooms

 1 Reception

 EPC Band C

Council Tax Band:  
F £3,420.96 (2026/2027)



 **ashtons**  
for life's great moves

Pegasus Place, St. Albans, AL3 5QT  
£3,500 PCM



Stunning four bedroom town house, beautifully presented and located within a short walk of the City Centre.

### Description

A stunning, high specification four bedroom town house, featuring extensive and beautifully presented accommodation, located less than half a mile from the bustling City centre. The ground floor features a welcoming entrance hall with tiled flooring, which leads into an impressive and fully equipped open plan kitchen/dining room, with a large central island and quality integrated appliances. The Kitchen also provides access to the low maintenance rear garden. A guest WC, internal storage cupboard and access to the integral garage are also located on the ground floor. Moving up to the first floor the space is equally as impressive, with the cosy Living Room, a recently refurbished family bathroom, and two good sized bedrooms, one with fitted wardrobes. The top floor features the lovely master bedroom, which comprises the large bedroom, fitted wardrobes, and a recently refitted en suite shower room, and a further double bedroom. Externally to the rear, is a private garden laid to lawn with 2 patio areas, ideal for al-fresco dining.

### Location

Pegasus Place is situated on Waverley Road, within 0.5 miles of the thriving City Centre, with it's vast array of cafes, restaurants, bars, coffee shops and boutique shopping facilities.

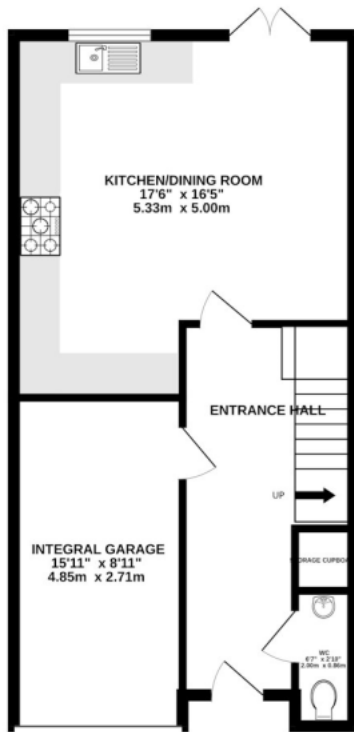




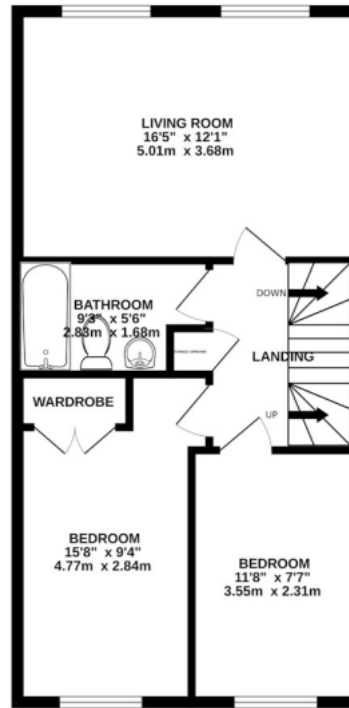




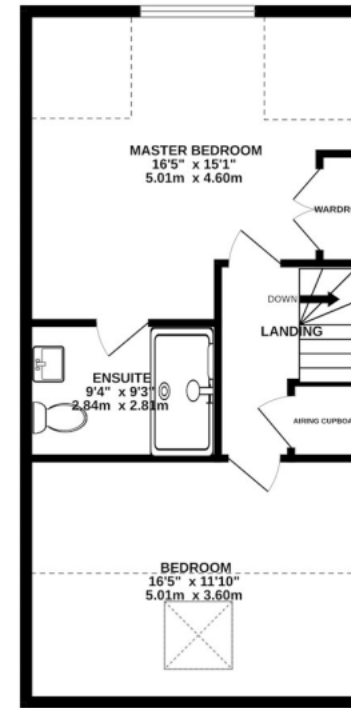




GROUND FLOOR  
542 sq.ft. (50.3 sq.m.) approx.



1ST FLOOR  
550 sq.ft. (51.1 sq.m.) approx.



2ND FLOOR  
550 sq.ft. (51.1 sq.m.) approx.

TOTAL FLOOR AREA : 1642 sq.ft. (152.5 sq.m.) approx.

This floor plan is for illustrative purposes only. The measurement and position of each element is approximate and must be viewed as such

**Important Information** These particulars do not constitute an offer or contract in whole or part. The statements contained herein are made without responsibility on the part of Ashtons or the vendors and they cannot be relied upon as representatives of fact. In respect of floor plans, these are for illustrative purposes only. The measurement and position of each element is approximate and must be viewed as such. Intending purchasers should therefore satisfy themselves by inspection or otherwise as to their correctness. The vendors do not make or give, and neither Ashtons nor any person in their employment has any authority to make or give, any representation or warranty whatsoever in relation to this property. We offer a wide range of services through third party providers including solicitors, surveyors, removal firms, mortgage providers and EPC suppliers. We receive additional payments for administering suppliers quoting software and making referrals. You are not under any obligations to use these services and it is your discretion whether you choose to deal with these parties or your own preferred supplier. You should be aware the average payment we received in 2024 equated to £29.76 per referral.