

 2 Bedrooms

 1 Bathroom

 1 Reception

 EPC Band C

Council Tax Band:  
B £1,842.06 (2026/27)



 **ashtons**  
for life's great moves

Hatfield Road, St. Albans, AL1 4LW  
£1,450 PCM

A two bedroom ground floor apartment, located circa 0.6 of a mile from the City station.

### Description

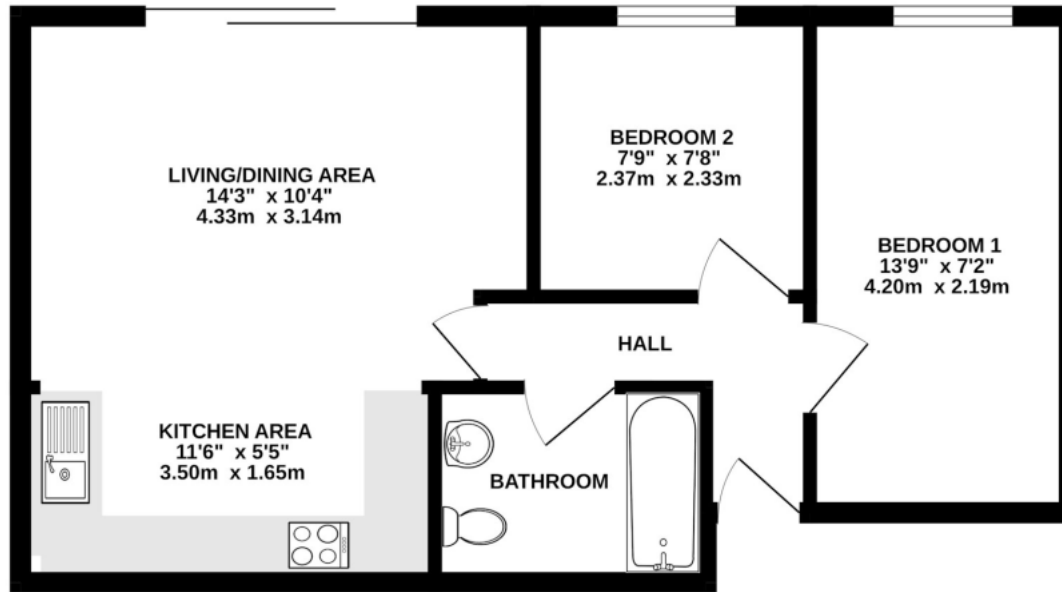
This well presented two bedroom property, is located on the ground floor of this modern apartment building and features include; large living room with laminate floors and sliding double glazed doors to the rear, open plan fitted kitchen with integrated appliances to include a dishwasher, double bedroom, further single bedroom/study, fully tiled bathroom with shower, neutral decor, double glazing, gas central heating and access to a small communal garden. Please note that there is no allocated parking with this property.

### Location

The property is located on Hatfield Road, circa 0.6 of a mile from the City Station, and with Morrisons supermarket and an abundance of cafes and restaurants within a short walk. There is also quick and easy access to the local motorway.







TOTAL FLOOR AREA: 437 sq.ft. (40.6 sq.m.) approx.

This floor plan is for illustrative purposes only. The measurement and position of each element is approximate and must be viewed as such

**Important Information** These particulars do not constitute an offer or contract in whole or part. The statements contained herein are made without responsibility on the part of Ashtons or the vendors and they cannot be relied upon as representatives of fact. In respect of floor plans, these are for illustrative purposes only. The measurement and position of each element is approximate and must be viewed as such. Intending purchasers should therefore satisfy themselves by inspection or otherwise as to their correctness. The vendors do not make or give, and neither Ashtons nor any person in their employment has any authority to make or give, any representation or warranty whatsoever in relation to this property. We offer a wide range of services through third party providers including solicitors, surveyors, removal firms, mortgage providers and EPC suppliers. We receive additional payments for administering suppliers quoting software and making referrals. You are not under any obligations to use these services and it is your discretion whether you choose to deal with these parties or your own preferred supplier. You should be aware the average payment we received in 2024 equated to £29.76 per referral.