




-  1 Bedroom
-  1 Bathroom
-  1 Reception
-  EPC Band C

Council Tax Band:  
C £2,105.21 (2026/27)



Stylish, modern ground floor apartment in a popular development near St. Albans City station.

### Description

This one bedroom apartment is close to shops, restaurants, and coffee shops, just moments from City station. Clarence Park is a short walk away, and Charrington Place offers private use of a communal garden. The property is immaculately presented, featuring new carpets and wardrobes. The modern kitchen is open plan to the living room, which boasts patio doors and a Juliet balcony. The bedroom is a good size with wardrobes, and the bathroom has a bath with a shower-over. A large cupboard in the hallway is great for storage and doubles as a utility room with space for a washing machine.

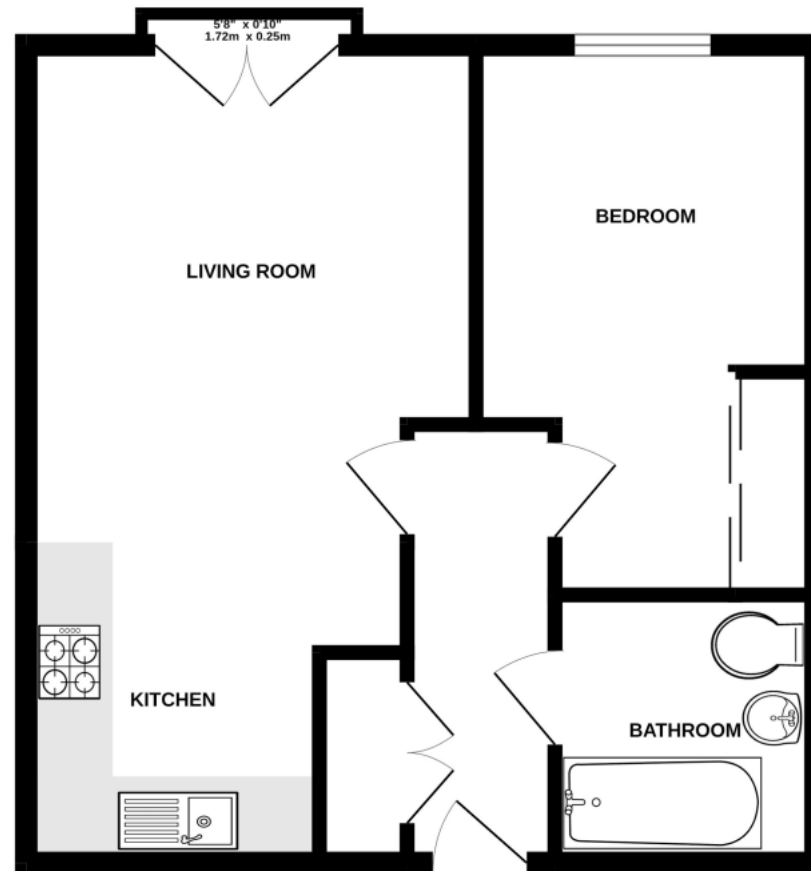
### Location

Ideally located 5 mins walk to St Albans mainline with direct trains to Kings Cross, Eurostar, Luton, Gatwick, and Brighton. 10 mins to high street and parks, 15 mins to St Albans Abbey with links to Watford Junction and London Euston.









TOTAL FLOOR AREA : 443 sq.ft. (41.1 sq.m.) approx.

This floorplan is for illustration purposes only. The measurements and position of each element are approximate and must be viewed as such.

**Important Information** These particulars do not constitute an offer or contract in whole or part. The statements contained herein are made without responsibility on the part of Ashtons or the vendors and they cannot be relied upon as representatives of fact. In respect of floor plans, these are for illustrative purposes only. The measurement and position of each element is approximate and must be viewed as such. Intending purchasers should therefore satisfy themselves by inspection or otherwise as to their correctness. The vendors do not make or give, and neither Ashtons nor any person in their employment has any authority to make or give, any representation or warranty whatsoever in relation to this property. We offer a wide range of services through third party providers including solicitors, surveyors, removal firms, mortgage providers and EPC suppliers. We receive additional payments for administering suppliers quoting software and making referrals. You are not under any obligations to use these services and it is your discretion whether you choose to deal with these parties or your own preferred supplier. You should be aware the average payment we received in 2024 equated to £29.76 per referral.