


 2 Bedrooms

 1 Bathroom

 1 Reception

 EPC Band D

Council Tax Band:
D £2,257.13 (2025/26)



Stunning 2-bedroom apartment, private entrance & terrace, in City Centre heart.

Description

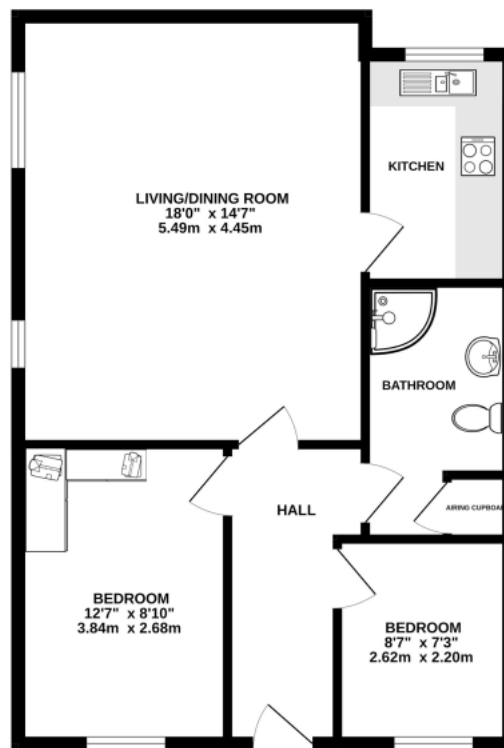
City Centre living! This beautifully presented 2 bedroom apartment is nestled in a quiet courtyard, offering privacy right in the heart of the City Centre, just a short walk to the Mainline Station. Accessed from The Maltings off Victoria Street, it also provides direct entry from the maltings shopping area. Recently redecorated and upgraded, the apartment offers high quality living in a fantastic location. It features a large, bright living/dining room, a fitted kitchen with modern appliances, a principal bedroom with fitted wardrobes, a second good sized bedroom/home office, and a well-appointed shower room. Other features include new heating, a private front door, and a terrace.

Location

Art School Yard is in The Maltings, St Albans City Centre, close to cafes, bars, restaurants, and shops. The mainline station offers quick access to Kings Cross/St Pancras and beyond. The Abbey flyer connects to Watford Junction and London Euston.







TOTAL FLOOR AREA : 622 sq.ft. (57.8 sq.m.) approx.

This floor plan is for illustrative purposes only. The measurement and position of each element is approximate and must be viewed as such.

Important Information These particulars do not constitute an offer or contract in whole or part. The statements contained herein are made without responsibility on the part of Ashtons or the vendors and they cannot be relied upon as representatives of fact. In respect of floor plans, these are for illustrative purposes only. The measurement and position of each element is approximate and must be viewed as such. Intending purchasers should therefore satisfy themselves by inspection or otherwise as to their correctness. The vendors do not make or give, and neither Ashtons nor any person in their employment has any authority to make or give, any representation or warranty whatsoever in relation to this property. We offer a wide range of services through third party providers including solicitors, surveyors, removal firms, mortgage providers and EPC suppliers. We receive additional payments for administering suppliers quoting software and making referrals. You are not under any obligations to use these services and it is your discretion whether you choose to deal with these parties or your own preferred supplier. You should be aware the average payment we received in 2024 equated to £29.76 per referral.