



1 Bedroom



1 Bathroom



1 Reception



EPC Band E

Council Tax Band:
C £2,006.35 (2025/26)



Bright & spacious 1 double bedroom first floor apartment with high ceilings, bay window & allocated parking.

Description

Beautifully presented and spacious one double bedroom apartment with high ceilings and large windows flooding the space with natural light. Accessed through a private front door via an external staircase to the first floor. Enter into the dual aspect, fully fitted kitchen with modern units and work surfaces. An inner hallway leads to the smart shower room, the rear double bedroom, and the bright front living room featuring a large bay window and decorative fireplace. The property includes one allocated parking space at the rear.

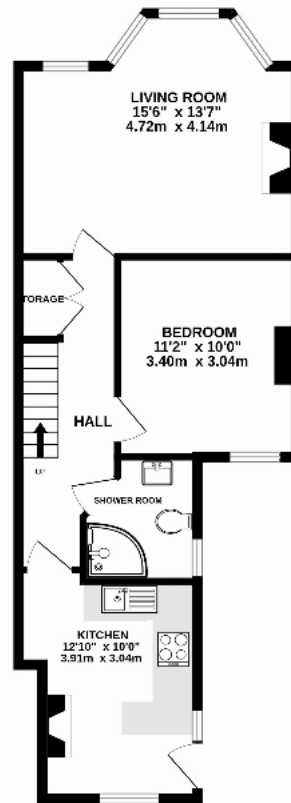
Location

Located in sought-after Fleetville, St Albans, this property is moments from a variety of cafes and restaurants. Morrisons supermarket is a short stroll away, and the mainline station is approximately 0.4 miles away.









TOTAL FLOOR AREA: 526 sq.ft. (48.8 sq.m.) approx.

This floor plan is for illustrative purposes only. The measurement and position of each element is approximate and must be viewed as such.

Important Information These particulars do not constitute an offer or contract in whole or part. The statements contained herein are made without responsibility on the part of Ashtons or the vendors and they cannot be relied upon as representatives of fact. In respect of floor plans, these are for illustrative purposes only. The measurement and position of each element is approximate and must be viewed as such. Intending purchasers should therefore satisfy themselves by inspection or otherwise as to their correctness. The vendors do not make or give, and neither Ashtons nor any person in their employment has any authority to make or give, any representation or warranty whatsoever in relation to this property. We offer a wide range of services through third party providers including solicitors, surveyors, removal firms, mortgage providers and EPC suppliers. We receive additional payments for administering suppliers quoting software and making referrals. You are not under any obligations to use these services and it is your discretion whether you choose to deal with these parties or your own preferred supplier. You should be aware the average payment we received in 2024 equated to £29.76 per referral.