



5 bedrooms



4 bathrooms



3 receptions



South-Facing



Off-Street Parking



EPC Band D

Freehold

Council Tax Band:
G £3,761.89 (25/26)

Local Authority:
St Albans District Council



Sought-after St Albans road, this impressive five-bed detached home is chain-free, expertly designed for modern living with versatile layout and landscaped garden.

Description

Upon entering, the welcoming hallway leads to a dedicated office space, a utility room, and a separate living area. The heart of the home is the stunning open-plan kitchen and dining space, featuring contemporary fittings and seamless access to the south-facing rear garden via elegant folding doors. The first floor hosts four well-proportioned bedrooms, including a luxurious principal suite with an en suite shower room, as well as two additional bathrooms. The top floor offers a private retreat with a further generously sized bedroom and an en suite, ideal for guests or extended family. Externally, the beautifully maintained rear garden enjoys a sunny south-facing aspect, primarily laid to lawn with a charming patio area, perfect for outdoor entertaining. A private driveway to the front provides ample off-road parking for multiple vehicles. Situated on St. Stephens Avenue, this exceptional home benefits from excellent transport links, including convenient motorway access, while being just 1.9 miles from St Albans City Station and 1.2 miles from the vibrant city centre.

Location

St Stephens Avenue, in sought-after St Stephens, south of St Albans city centre, boasts walking access to top schools, Verulamium Park, the city centre, and Waitrose. Near St Albans Station and major motorways for excellent transport links.

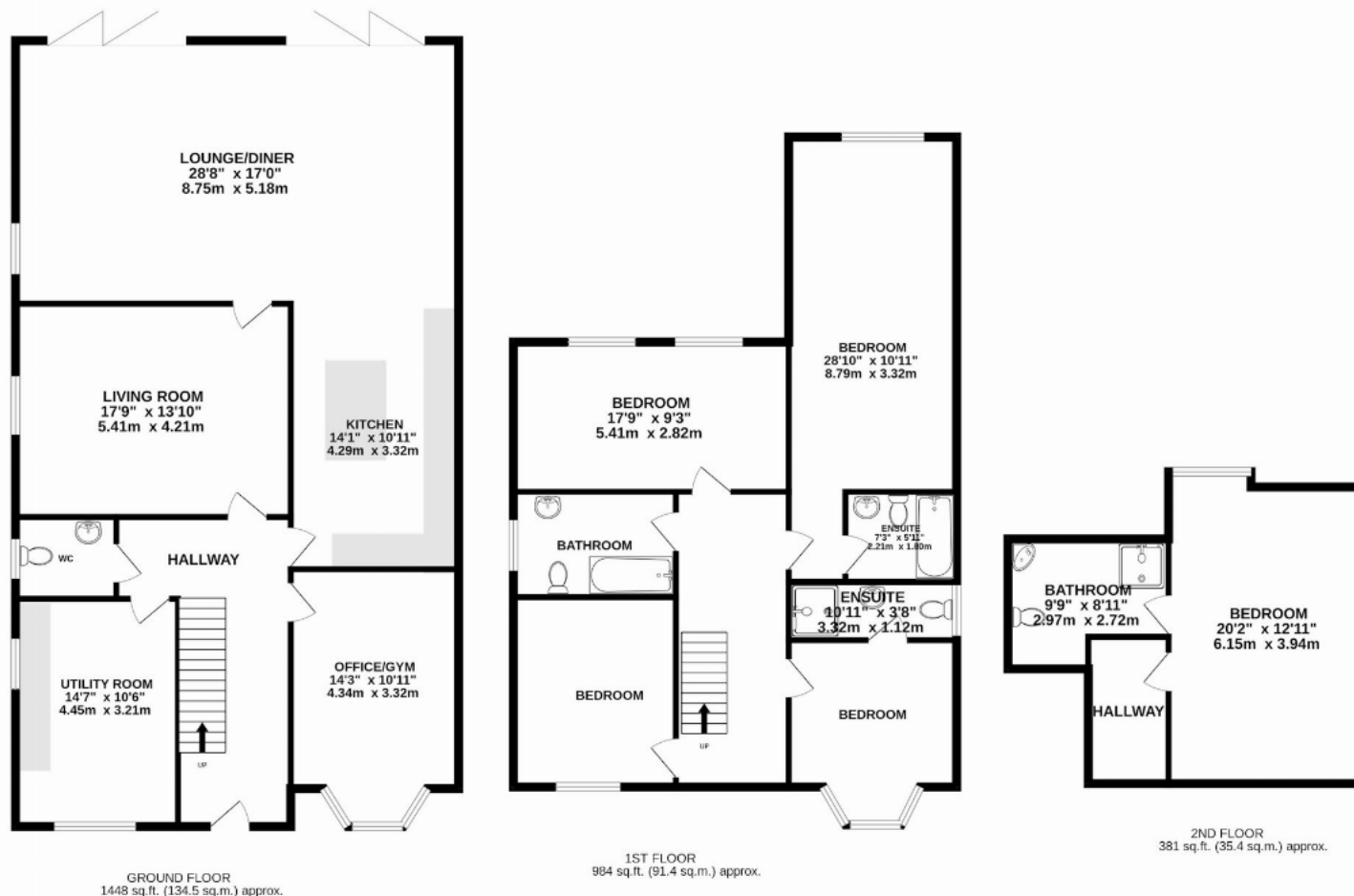
Buyers Information

In compliance with the UK's Anti Money Laundering (AML) regulations, we are required to confirm the identity of all prospective buyers at the point of an offer being accepted and use a third party, Identity Verification System to do so. There is a nominal charge of £48 (per person) including VAT for this service. For more information, please refer to the terms and conditions section of our website.









TOTAL FLOOR AREA : 2813 sq.ft. (261.4 sq.m.) approx.

This floorplan is for illustration purposes only. The measurements and position of each element are approximate and must be viewed as such.

Important Information These particulars do not constitute an offer or contract in whole or part. The statements contained herein are made without responsibility on the part of Ashtons or the vendors and they cannot be relied upon as representatives of fact. In respect of floor plans, these are for illustrative purposes only. The measurement and position of each element is approximate and must be viewed as such. Intending purchasers should therefore satisfy themselves by inspection or otherwise as to their correctness. The vendors do not make or give, and neither Ashtons nor any person in their employment has any authority to make or give, any representation or warranty whatsoever in relation to this property. We offer a wide range of services through third party providers including solicitors, surveyors, removal firms, mortgage providers and EPC suppliers. We receive additional payments for administering suppliers quoting software and making referrals. You are not under any obligations to use these services and it is your discretion whether you choose to deal with these parties or your own preferred supplier. You should be aware the average payment we received in 2024 equated to £29.76 per referral.